

10:00 A M
107 Atkinson

BUILDING PROGRAM
LAUREN BROUSSARD



TABLE OF CONTENTS

Introduction.....	2
Key Terms and Definitions.....	3
Site Information.....	4
Site Selection.....	4
Site History.....	5
Climate Data.....	5
Topographical Data.....	6
Images and Maps.....	7
Site Analysis.....	24
Project Goals.....	26
Precedents.....	27
Spatial Requirements.....	32
Adjacency Diagram.....	39
Code Requirements.....	40

INTRODUCTION

This project will be approached through the eyes of temperance. The basic definitions that come to mind when discussing temperance are moderation and self-restraint. However, temperance is actually much more involved than these simple, straightforward definitions imply. To become truly temperate requires a repetitive behavior. It is not contained within one single act. By continually denying oneself, temperance eventually may be achieved. Temperance also requires the presence of gluttonous objects and temptations. If locked in a room where no temptations are present, one cannot truly be temperate. Practicing temperance means being in the midst of temptations and exercising control. Once someone has achieved temperance, a change in perception occurs. One may walk down the same street and be subjected to the same things, but those temptations no longer have the same effect on the temperate person. All of this occurs on an individual basis because it calls for a moment of self-reflection.

Temperance will be established in the gluttonous French Quarter by founding a mission on Bourbon Street. A mission is either the building that houses missionaries or a special assignment given to a person or group. Another description is an outreach, which is defined as a systematic attempt to provide services to a community. The special assignment given to these missionaries is to interact on an individual basis with the visitors of Bourbon Street to create an awareness of the gluttony and to guide the visitors to a temperate lifestyle. In other words, the missionaries will be charged with the task of infusing temperate behavior in a gluttonous zone. Rather than using methods such as mass media, the process will be much more personal and allow for the necessary self-reflection.

The missionaries will draw people to a temperate lifestyle through two methods: obvious recruitment and subtle recruitment. Obvious, or direct, recruitment will occur as the missionaries walk the streets and speak with people one-on-one. The building that houses the mission and the activities of the missionaries will perform the subtle, or indirect, recruitment. Within the building, the missionaries will hold meetings and instructional sessions. Although they will not be speaking directly with the people on the street, the design of the mission will allow passers-by to observe the activities, hear the discussions, and interact with the mission.

The construction techniques used to build the mission will also serve as an example of temperance. Four groups of people that were known not only for their temperate lifestyles but also their temperate construction methods are the Puritans, Quakers, Shakers, and Amish. For instance, the Shakers were known for simple, well-made furniture, and their buildings were always plain and without embellishment. The mission will use similar techniques to achieve a temperate building.

KEY TERMS AND DEFINITIONS

Mission

1. A body of envoys to a foreign country; a permanent diplomatic office abroad
2. A body of missionaries or the building that houses them
3. A special assignment given to a person or group
4. A vocation

Missionary

1. A propagandist for a belief or cause
2. One who attempts to convert others to a particular doctrine or set of principles

Outreach

1. A systematic attempt to provide services to a community

Shaker

1. A member of a Christian group practicing communal living and observing celibacy
2. Simple, well-made furniture and utensils

Amish

1. A member of a Mennonite sect that settled primarily in SE Pennsylvania in the late 17th century
2. Marked by plain dress and no adornment

Quaker

1. A member of the Society of Friends
2. Belief in the avoidance of extravagance and ostentation
3. Nothing in excess

Puritan

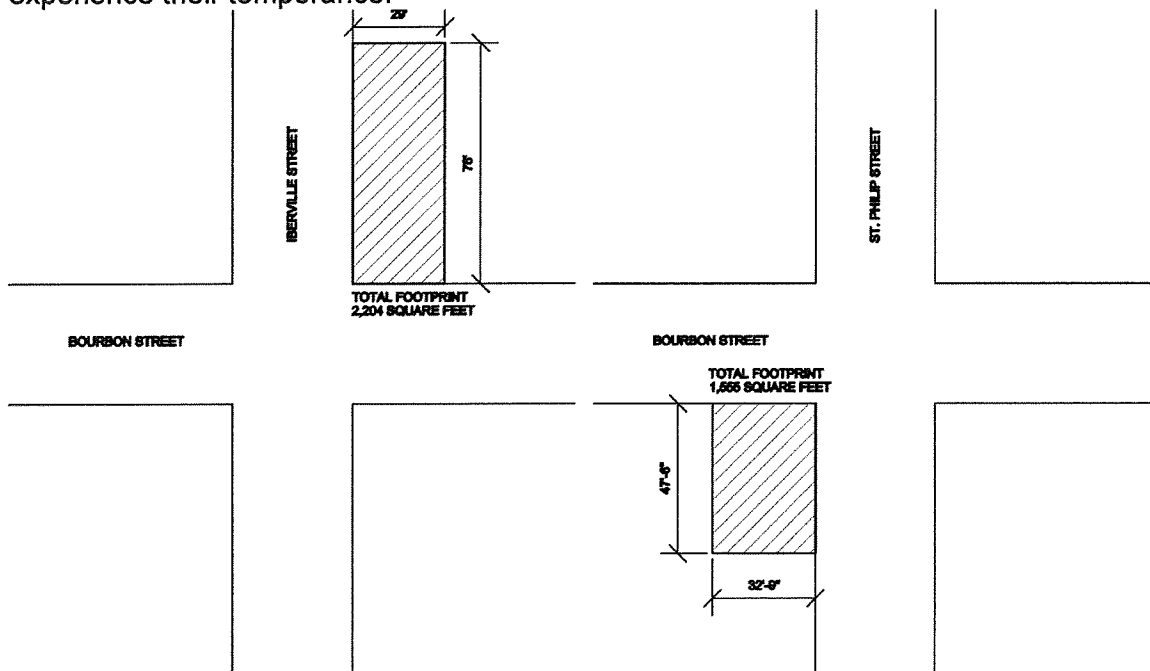
1. A member of a group of English protestants who in the 16th and 17th centuries advocated strict discipline and simplification of religious ceremonies
2. One who regards pleasure or luxury as sinful

SITE INFORMATION

SITE SELECTION

Bourbon Street is known for its bars, strip clubs, food, and entertainment. What better place to find gluttony in the French Quarter than on Bourbon Street? Because the true practice of temperance requires the presence of temptations and gluttony, Bourbon Street provides the perfect environment in which to establish a place of temperance. When walking down Bourbon Street, two perceptible edges occur. Although Bourbon Street is fourteen blocks long, the main area for bars and other similar establishments ends at these edges, Iberville Street and St. Philip Street. The majority of the temptations and gluttony of Bourbon Street lie between these two streets, and the atmosphere beyond these streets is quite different. By establishing a place of temperance at these two intersections, thresholds will be created that will confront people either upon their entrance onto Bourbon Street or their departure from Bourbon Street. Either their perception of Bourbon Street will be altered before they reach the main area, or the visitors will be asked to question their acts of gluttony as they leave. Within the main area of Bourbon Street, they will also experience the presence of the missionaries. Through their practice of temperance and their evangelization, the missionaries will alter the manner in which Bourbon Street is perceived and enable the visitors to experience temperance.

The specific sites are the intersections of Iberville Street and St. Philip Street with Bourbon Street. The two corners are indicated in the site drawings below. Two sites were chosen so that the main area of the gluttonous Bourbon Street is enveloped by temperance. By dividing the program amongst two sites, a daily ritual, or flow, of the missionaries will be created along Bourbon Street. Every morning and every evening, the missionaries will journey along Bourbon Street so the visitors of Bourbon Street can experience their temperance.



SITE HISTORY

Named for French Royalty, Bourbon Street is the most famous street of the French Quarter. It is known for good music, good food, and the phrase "laissez les bon temps roulez." The main part of Bourbon Street is lined with nightclubs that feature live jazz, karaoke, and strip shows. Visitors can find something to do at any time because many of the businesses are run twenty-four hours a day.

The other two streets involved in the site are Iberville Street and St. Philip Street. Iberville Street runs parallel to Canal Street starting at the Mississippi River and continuing to Rampart Street. It was once called New Custom House Street, as seen on the historical map, but it was later renamed for the French-Canadian explorer, Iberville, who claimed the Louisiana Territory for the French monarchy.

In the eighteenth century, cafes that were frequented by people who traveled to New Orleans to escape social turmoil at home dominated St. Philip Street. It is said that the Café des Refugees served those fleeing the French Revolution, and the Café des Emigrees saw many who fled the slave uprisings in Santo Domingo. Another place that provided an escape was the theater that stood between Royal Street and Bourbon Street where the school now stands. These historic sites no longer exist. However, Lafitte's Blacksmith Shop still stands on the northwest corner of Bourbon Street and St. Philip Street. Local legend claims that this shop, built in 1772, once served as a hideaway for the pirates Jean and Pierre Lafitte. The method of construction used for this building is termed *brique entre poteau*, or brick between posts.

CLIMATE DATA

	Jan	Feb	Mar	Apr	May	Jun
Average Monthly Temperatures	56 F	58 F	62 F	69 F	76 F	81 F
Average Precipitation (inches)	4.97	5.23	4.73	4.5	5.07	4.63
No. of days with 0.01 in. or more precipitation	10	9	9	7	8	10
Percentage of Possible Sunshine	49%	51%	57%	65%	69%	67%
Relative Humidity	67%	64%	60%	59%	59%	60%

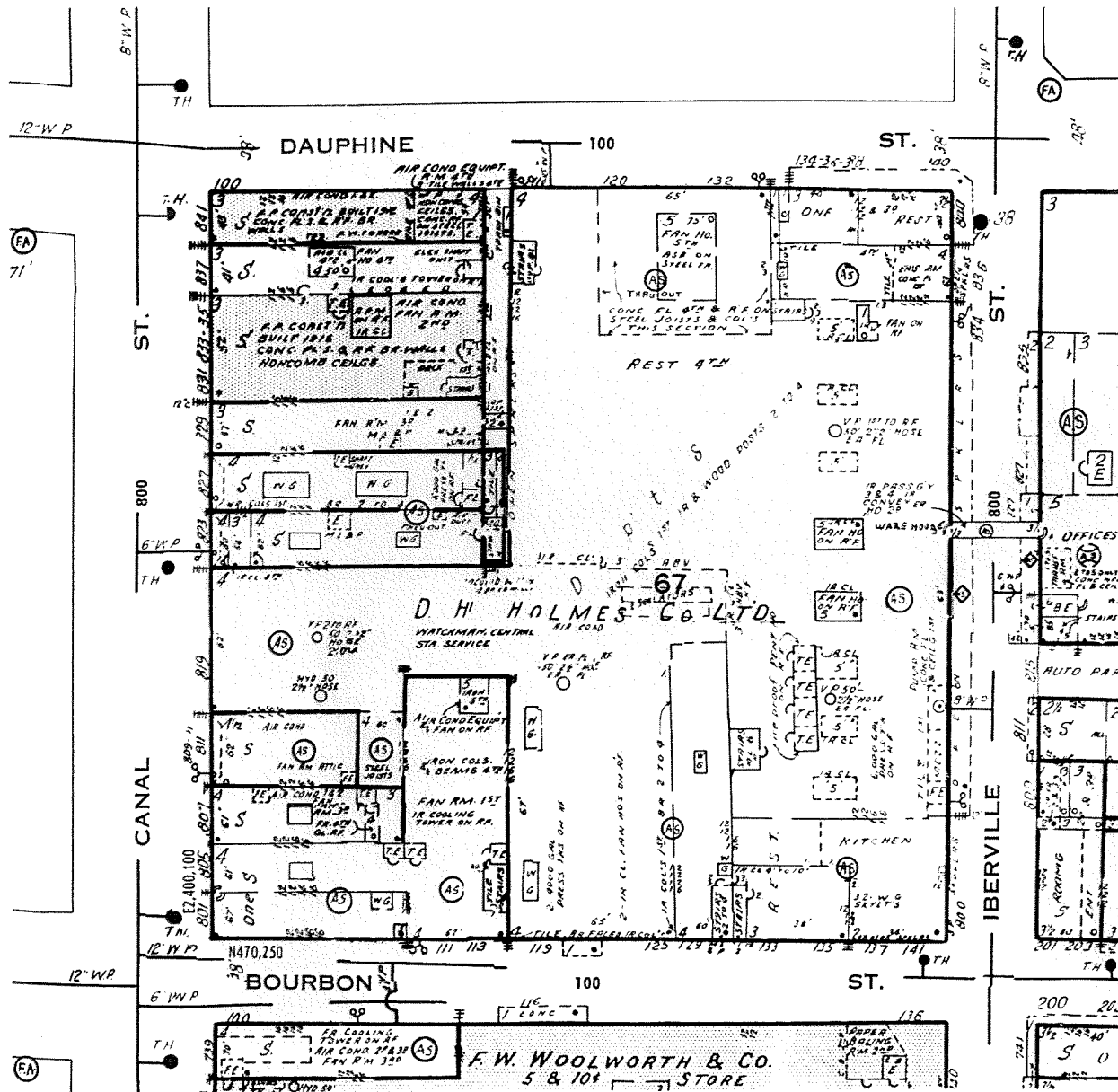
	Jul	Aug	Sept	Oct	Nov	Dec
Average Monthly Temperatures	83 F	83 F	79 F	71 F	61 F	57 F
Average Precipitation (inches)	6.73	6.02	5.87	2.66	4.06	5.27
No. of days with 0.01 in. or more precipitation	15	13	10	5	7	10
Percentage of Possible Sunshine	61%	63%	64%	72%	62%	48%
Relative Humidity	62%	63%	62%	59%	60%	66%

Source: US Department of Commerce – National Weather Bureau

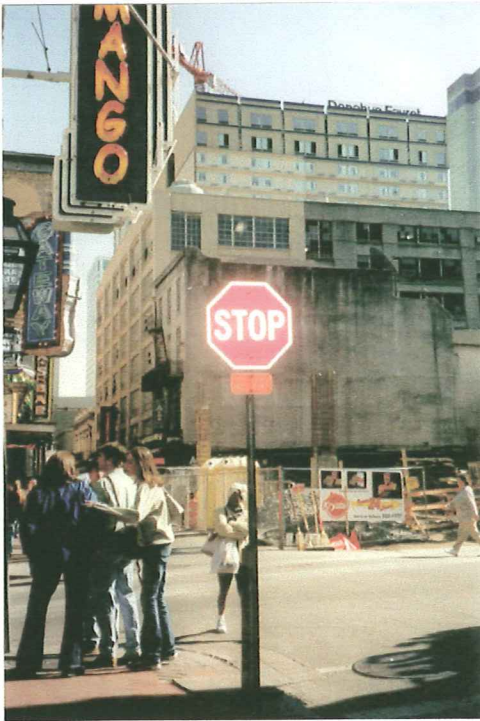
TOPOGRAPHICAL DATA



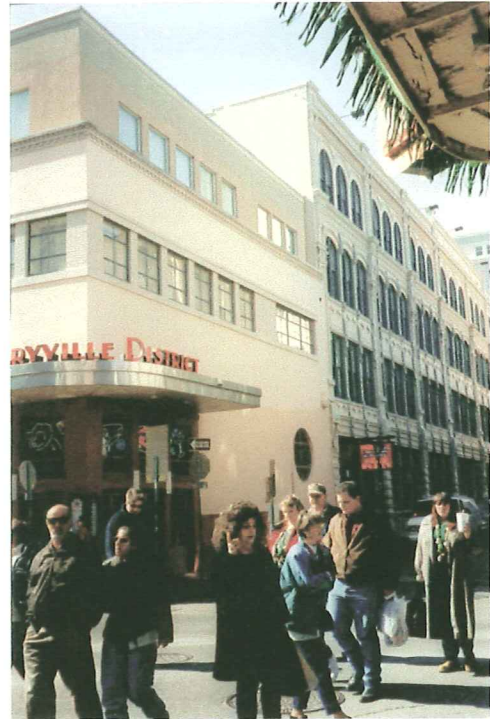
[illegible]



Iberville Street Corners



Southwest Corner

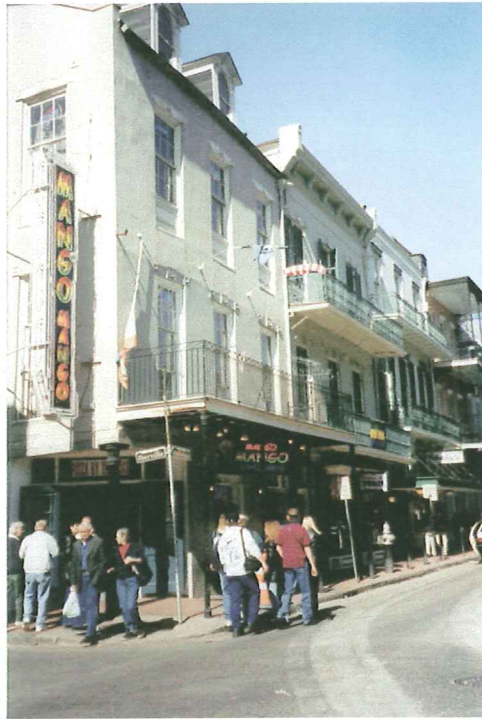


Northwest Corner

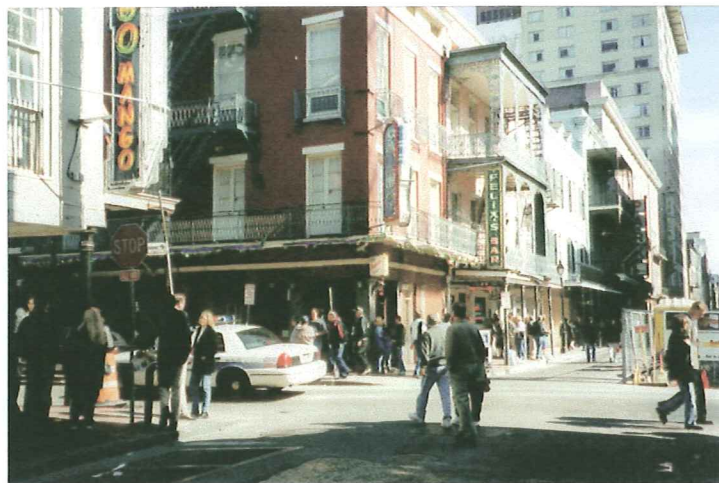


Southwest Corner

Iberville Street Corners



Northeast Corner



Southeast Corner

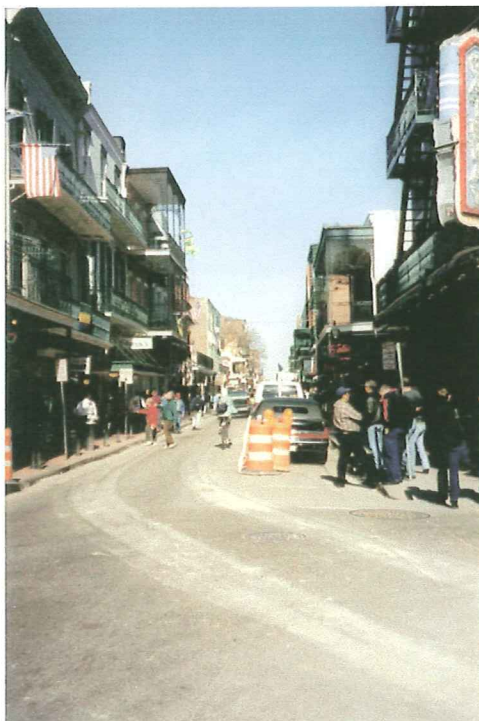
Iberville Street - Views from Site



Looking West down Bourbon Street



Looking West down Bourbon Street

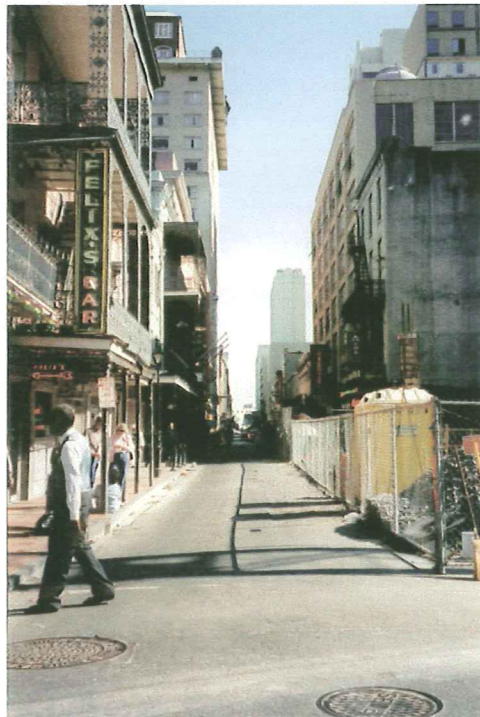


Looking East down Bourbon Street

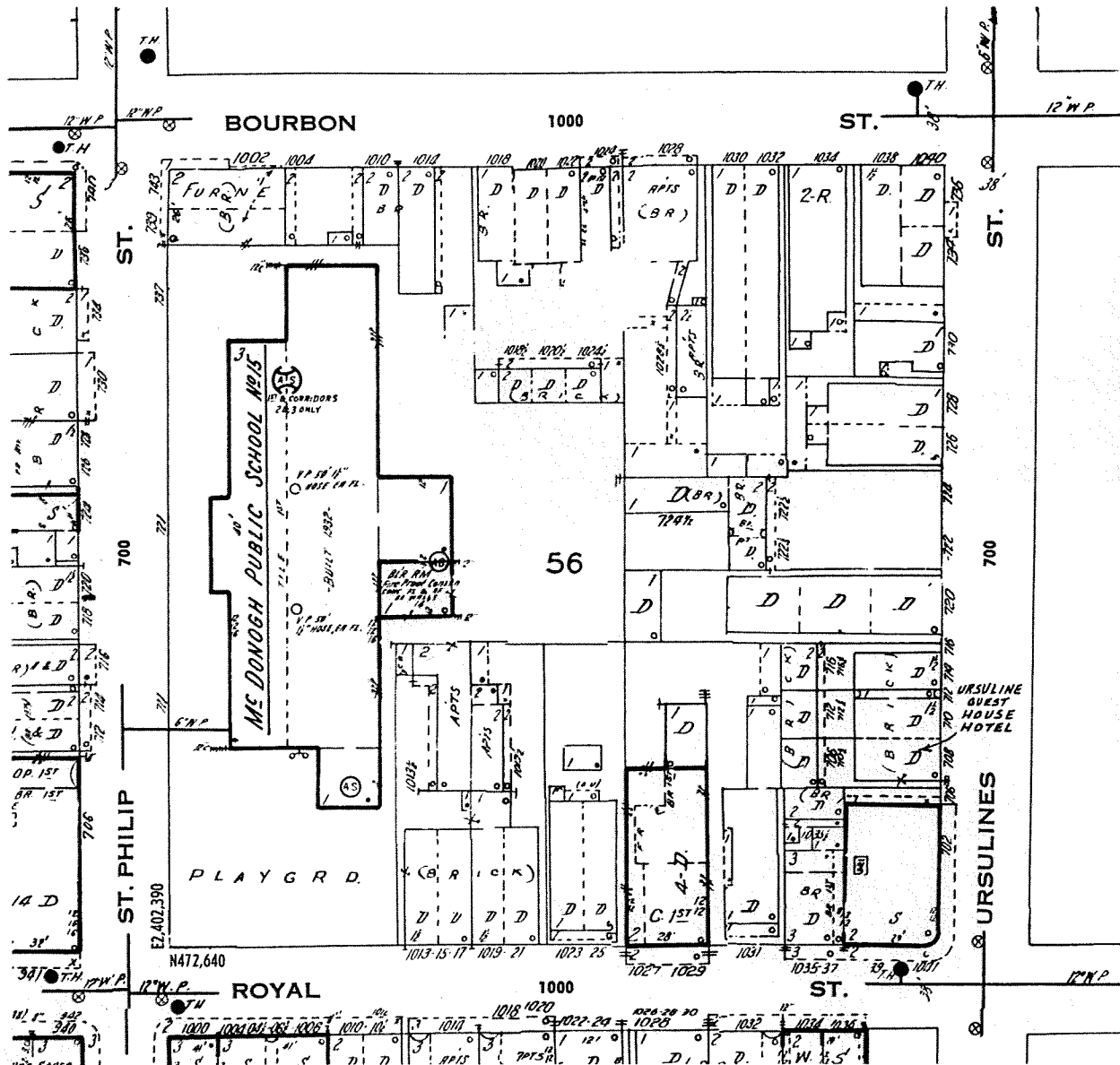
Iberville Street - Views from Site

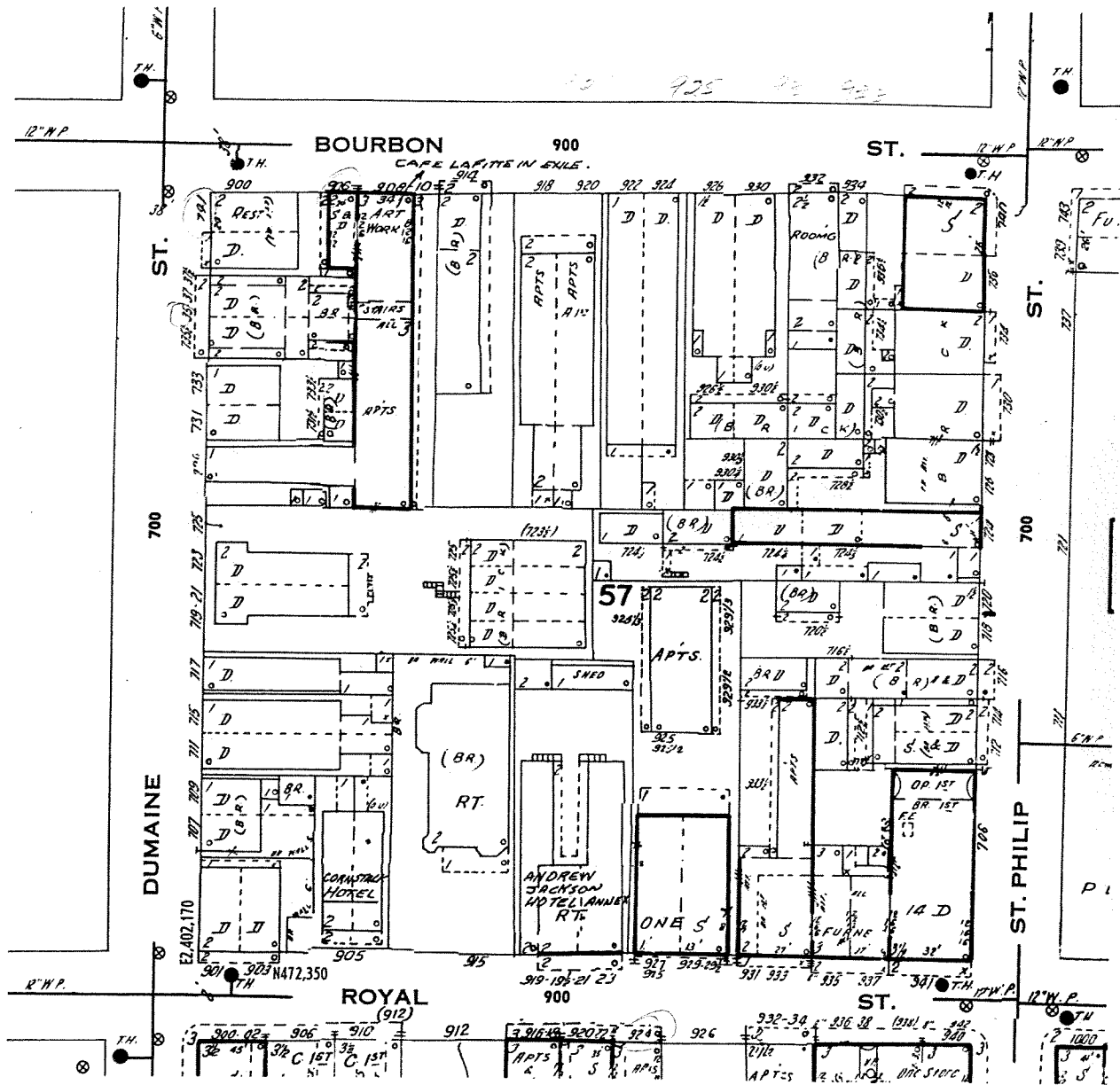


Looking North up Iberville Street



Looking South down Iberville Street

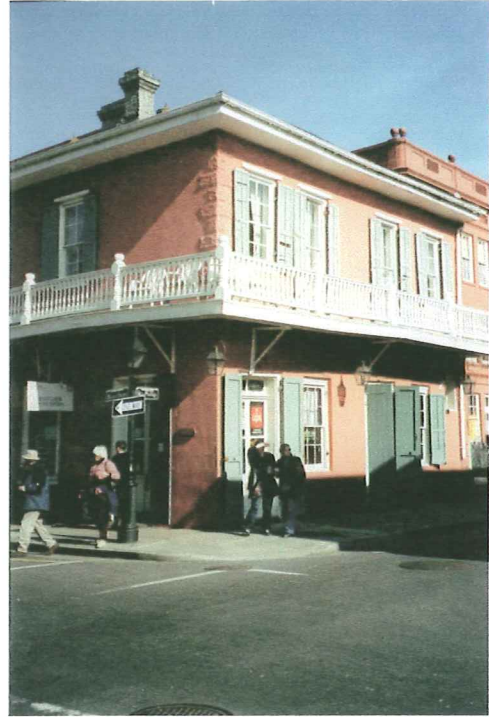




St. Philip Street Corners



Southwest Corner



Southeast Corner



Northwest Corner
Lafitte's Blacksmith Shop

St. Philip Street Corners



Northeast Corner

St. Philip Street - Views from Site



Looking North up St. Philip Street



Looking South down St. Philip Street - McDonogh Public School



Looking South down St. Philip Street

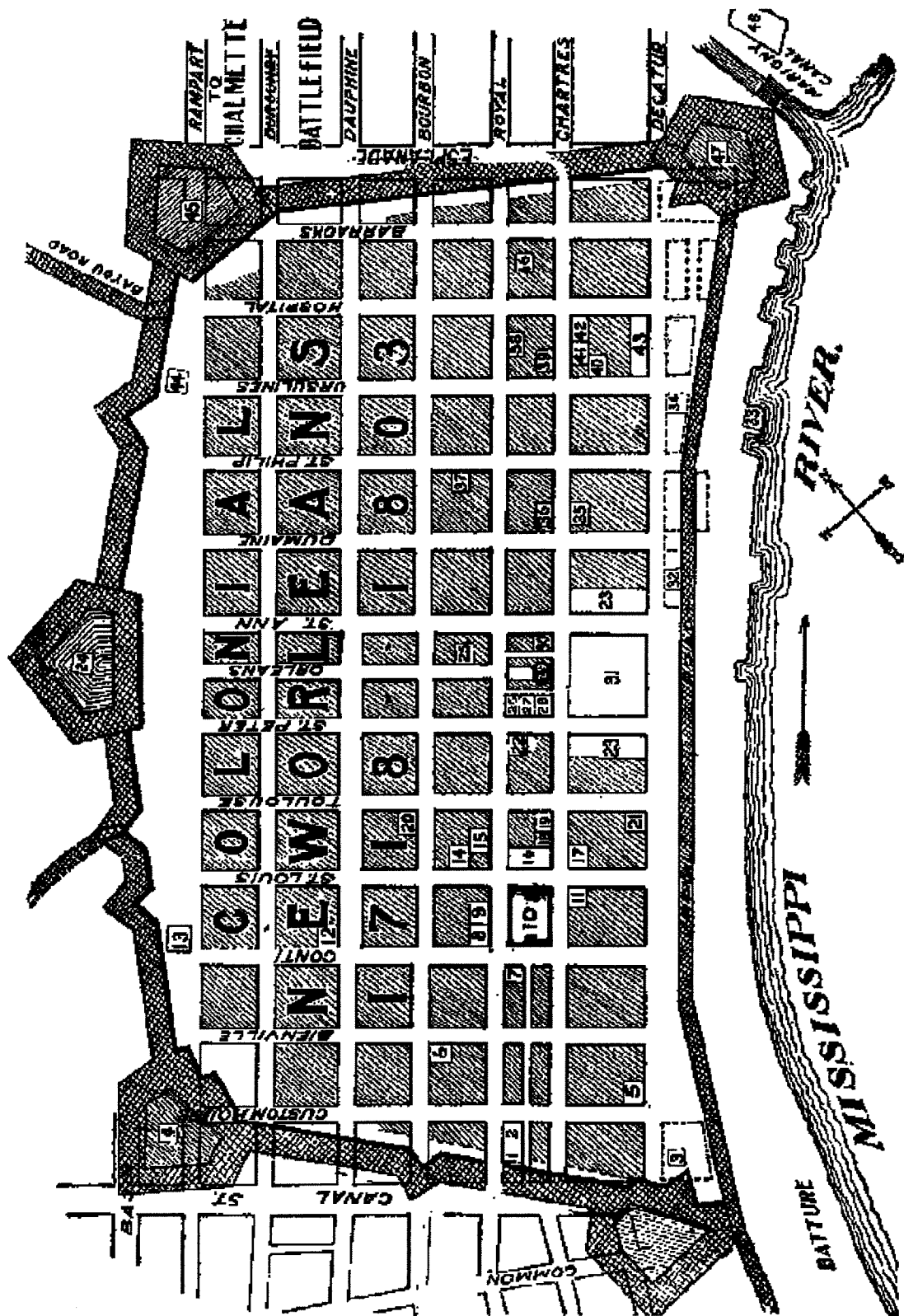
St. Philip Street - Views from Site



Looking West down Bourbon Street

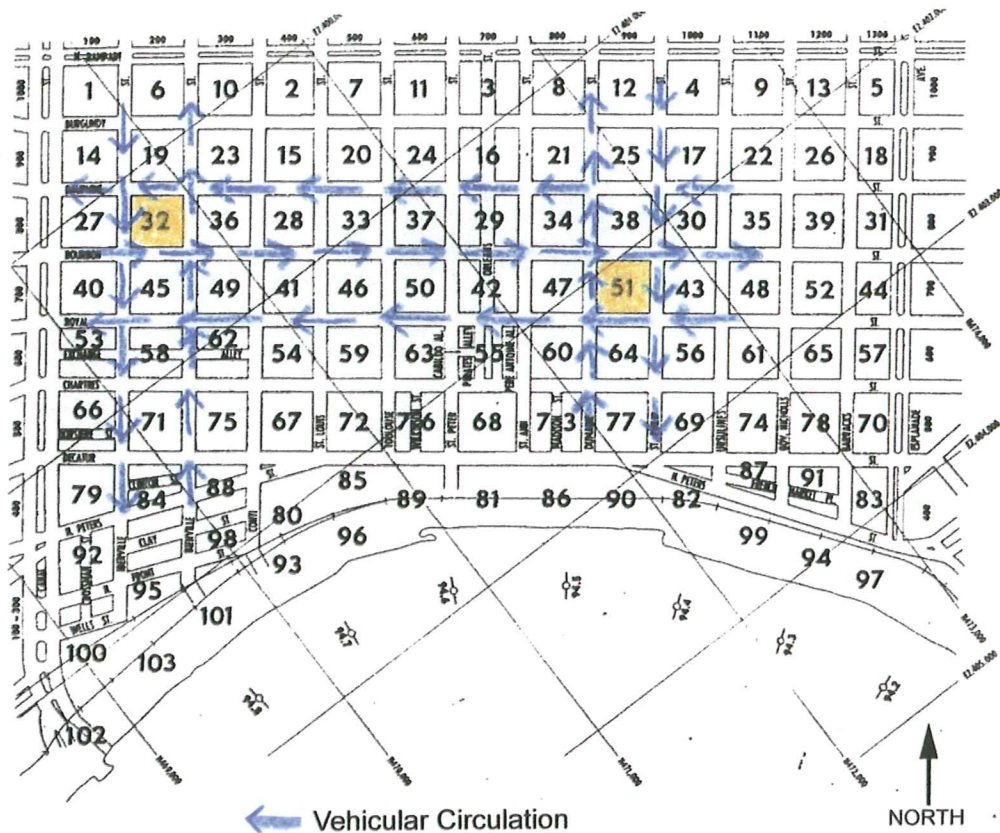
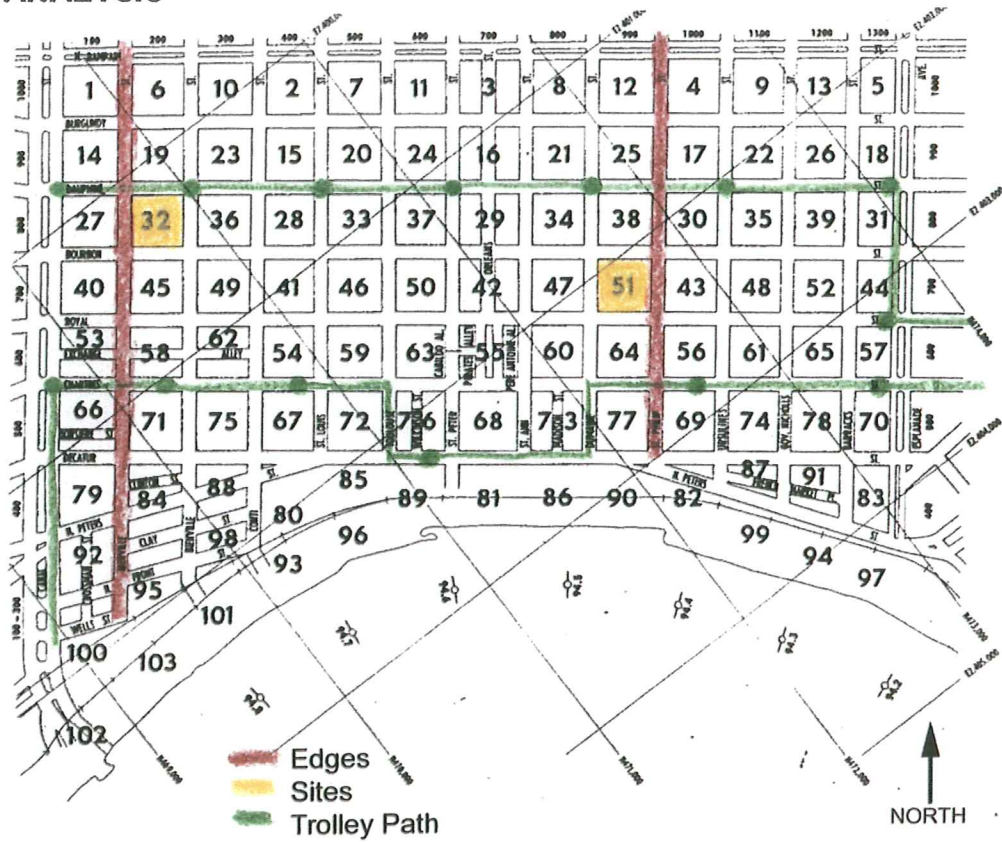


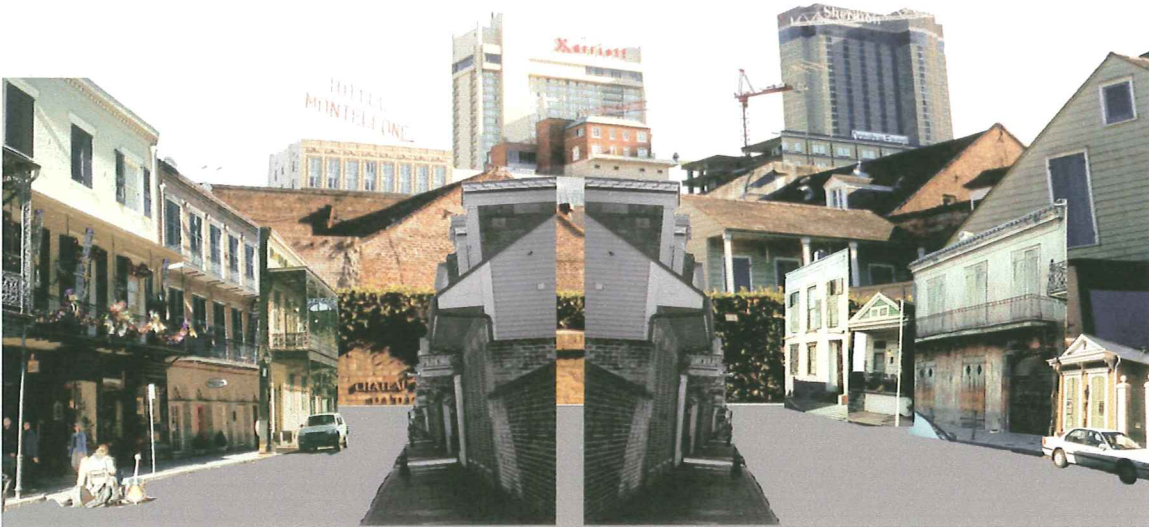
Looking East down Bourbon Street



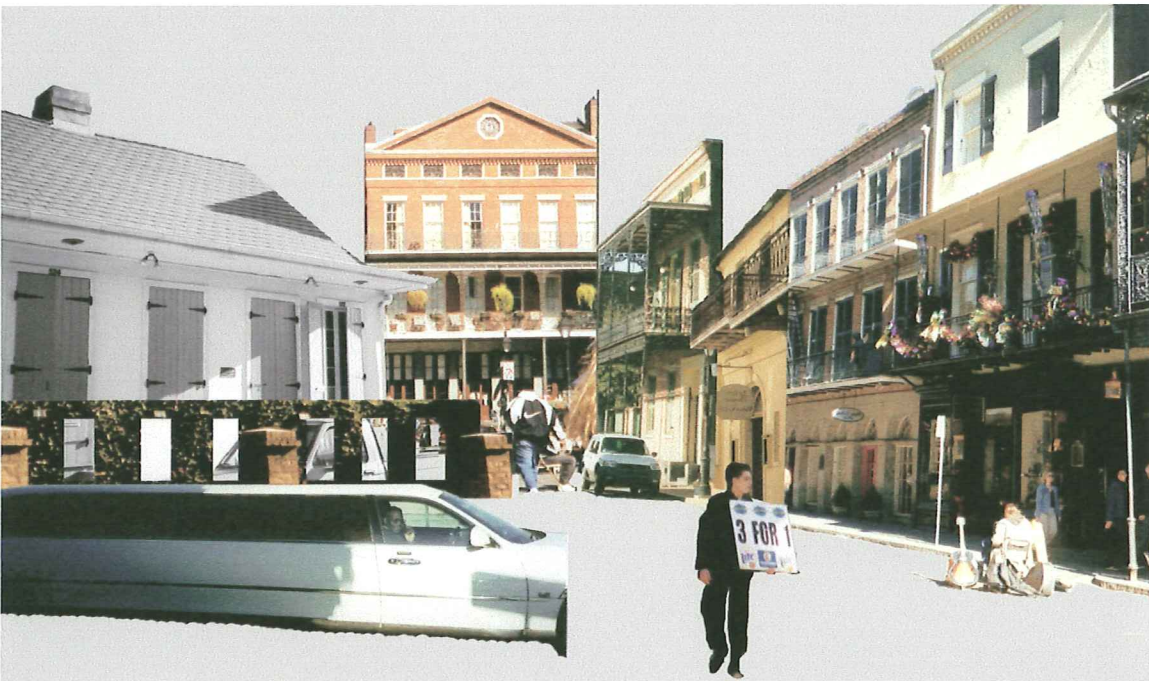
New Orleans, 1803

SITE ANALYSIS





Temperance is a middle-ground between excess and destitution. Exercising temperance does not require the denial of all necessities. It simply requires the use of self-restraint. A temperate person can have the basic necessities. However, he or she should not over-indulge and go beyond the necessities.



The existence of temperance requires the presence of gluttony. A temperate person can see and feel the temptations, but he or she must set a personal boundary to practice self-restraint.



A change in perception is a necessary step in the process of becoming temperate. A person progresses along a street amongst all of the temptations and gluttony. The decision to exercise temperance occurs at a different point for each individual, but each person must experience a moment of self-reflection and work towards temperance. After becoming temperate, the same temptations and environment exist. However, the perception of the places change.

PROJECT GOALS

- The space will be designed so that the residents of the mission will be able to live a temperate lifestyle in the midst of Bourbon Street. Keep in mind the Shakers, Quakers, Puritans, and Amish.
- The construction of the building will be done in a temperate manner.
- The space will be conducive to bringing the temperate lifestyle to the street.
- The space will meet the visitors of Bourbon Street as they arrive or leave.
- The space will encourage interaction and participation among the missionaries and the visitors.
- The mission will entice the visitors of Bourbon Street and arouse their curiosity.
- The space will exhibit something that does not already exist within the French Quarter so that it will stand out and attract people.
- The mission will create a daily ritual that allows the missionaries to journey along Bourbon Street every day.

PRECEDENTS

FUNCTIONS OF MISSIONS

- "Bringing the Mission Field Closer to Home: Strategies for using the Internet in missions." Asbury Theological Seminary.
<<http://www.pearson.org/~jenn/missions/>>
- "The Living Room." The Living Room. 28 August 2000.
<<http://livingroom.fsnet.co.uk>>
- "Mountainside: Canaan, Connecticut." Mountainside.
<<http://www.addictionsnet.org>>
- "St. Joseph's Rehabilitation Center, Inc." St. Joseph's Rehabilitation Center, Inc.
<<http://www.alcoholandsubstanceabuse.com>>
- "Treasures out of Darkness." Victory Outreach Residential Services.
<www.victoryoutreach.org>
- Wilkerson, David. The Cross and the Switchblade. New York, NY: Bernard Geis Associates, 1963.

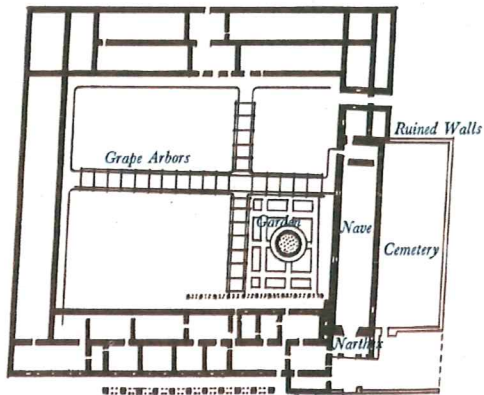
EXAMPLES OF TEMPERATE LIFESTYLES

- "Amish." Microsoft Encarta Online Encyclopedia. 2000.
<<http://encarta.msn.com>>
- "The Amish: Beliefs, practices, conflicts." Religious Tolerance. 12 December 2000 <<http://www.religioustolerance.org/amish.htm>>
- "Canterbury Shaker Village Tour." Canterbury Shaker Village.
<<http://www.shakers.org/tour.html>>
- "Puritanism." Microsoft Encarta Online Encyclopedia. 2000.
<<http://encarta.msn.com>>
- "Quaker Customs and Beliefs." Jerry Richmond, Fidonet Genealogy Conference. 2 February 1998. <<http://www.rootsweb.com/~quakers/quakinfo.htm>>
- "Shakers." Microsoft Encarta Online Encyclopedia. 2000.
<<http://encarta.msn.com>>

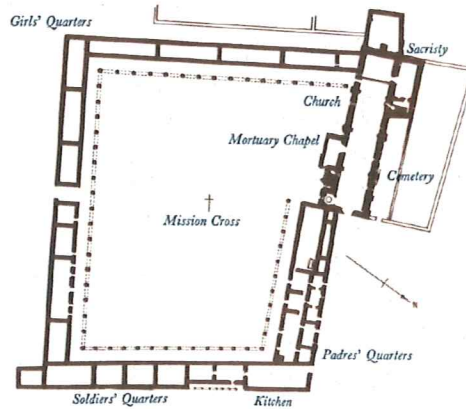
ARCHITECTURE PRECEDENTS

- Johnson, Paul C., ed. The California Missions. Menlo Park, CA: Lane Book Company, 1964.
- Lassiter, William Lawrence. Shaker Architecture. New York, NY: Bonanza Books, 1966.
- Lee, Antoinette. "Spanish Missions." The Association for Preservation Technology Bulletin. 1990: 42-51.
- Newcomb, Rexford. The Old Mission Churches and Historic Houses of California. Philadelphia, PA: J. B. Lippincott Company, 1925.
- Stoddard, Whitney S. Adventure in Architecture: Building the New St. John's. New York, NY: Longmans, Green, and Company, 1958.
- Young, Stanley. The Missions of California. San Francisco, CA: Chronicle Books, 1988.

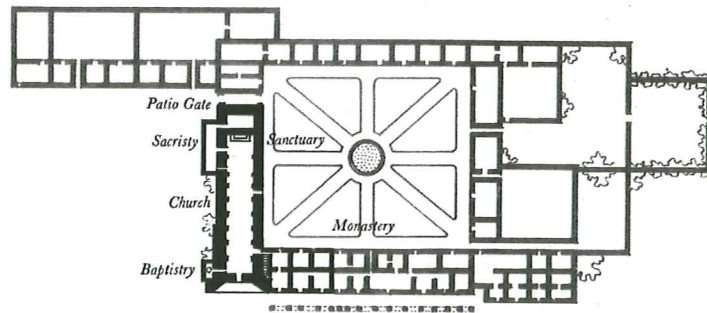
PRECEDENT IMAGES – SPANISH MISSION STYLE



San Luis Obispo de Tolosa
The California Missions, p. 118



San Carlos Borromeo de Carmelo
The California Missions, p. 65



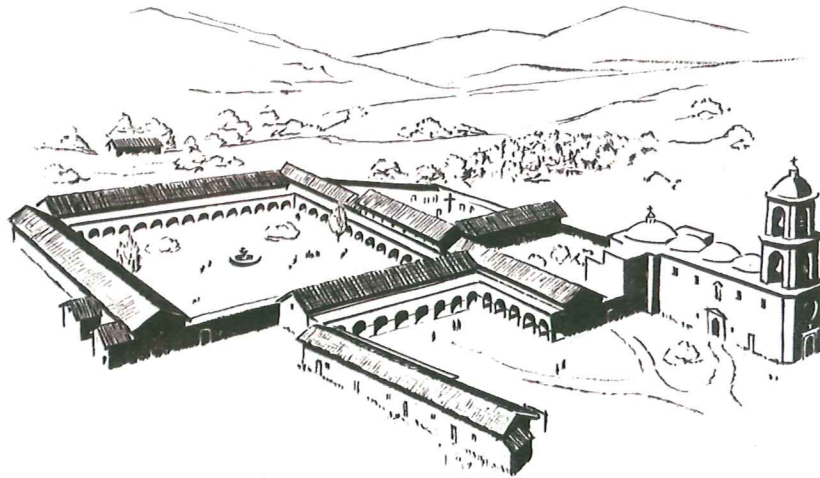
San Diego de Alcalá
The California Missions, p. 53



Mission Santa Clara
The Missions of California, p. 107



Mission San Buenaventura
The Missions of California, p. 44

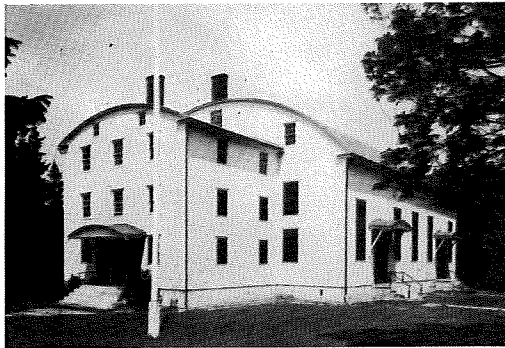


Mission San Juan Capistrano
The California Missions, p. 143

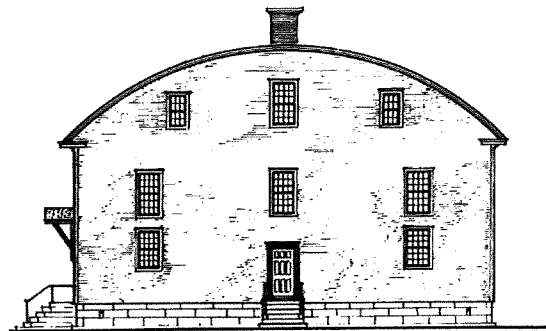


Mission San Juan Capistrano
The Missions of California, pp. 22-25

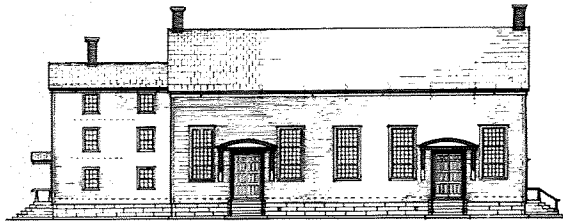
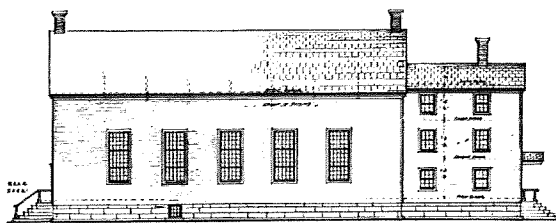
PRECEDENT IMAGES – SHAKER ARCHITECTURE



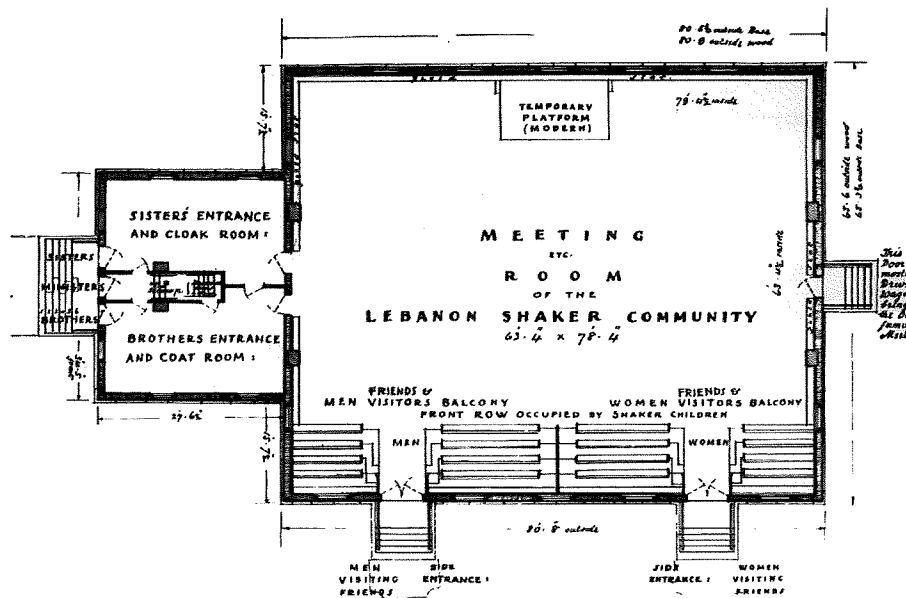
Meeting House



Elevation

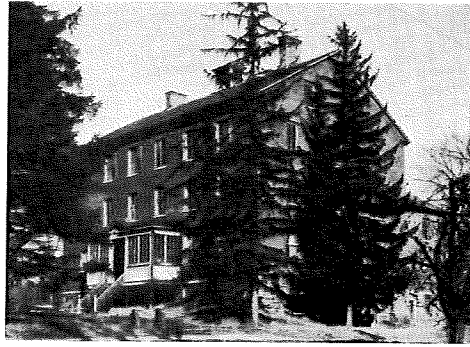


Elevations

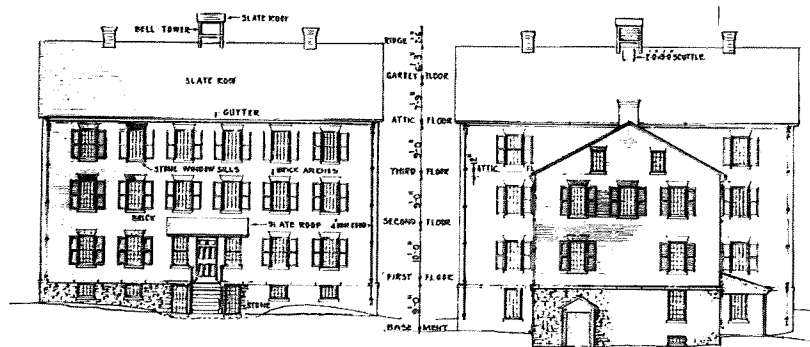


Floor Plan

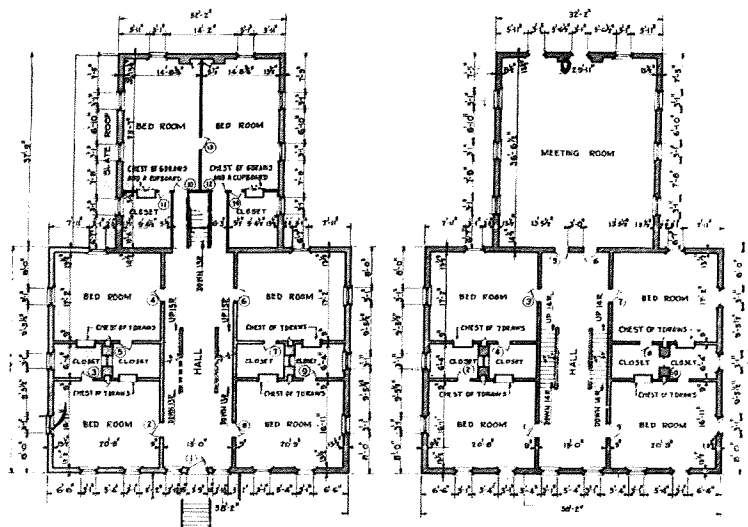
Mount Lebanon, New York
Shaker Architecture, pp. 65-80



Main Dwelling House



Elevations



Floor Plans

West Family Vatterliet, New York
Shaker Architecture, pp. 109-121

SPATIAL REQUIREMENTS

A. Temperance Threshold

Threshold: an entrance; the beginning; the lowest level or intensity at which a stimulus can be perceived or can produce a given effect

The Temperance Threshold begins the infusion of temperate behavior into the gluttonous area of Bourbon Street. As people walk along the street, they will find the threshold enticing and it will arouse their curiosity. From the threshold, the visitors will be able to hear meetings occurring inside the mission. The visitors will be approached on an individual basis because of the scale of the Temperance Threshold. At this point, they will decide whether or not they wish to enter the Induction Center.

From the outset, the building will serve as an example of temperance. The construction will be simple and straightforward much like the Shakers or Amish. Not only must the people exercise temperance, but the building must also exercise temperance.

1. Function: To address the street and draw people in. The entrance should allow people to interact with the building just as the missionaries are to interact with the visitors in the street.
2. Requirements: The entrance should address the sidewalk and attract the attention of the people on the street. It will be a very public area.
3. Adjacencies: Induction Center, Bourbon Street

B. Induction Center

Induct: to admit as a member; initiate

The induction center is situated adjacent to the Temperance Threshold to greet any visitor who chooses to venture past the threshold. They may be arriving of their own volition, or a missionary on the street may have encouraged a conversion. The induction center will serve two purposes: simply to allow the visitors to acquire information about the mission or to allow them to enter into a temperate lifestyle as a guest of the mission. The induction center will be a friendly place that enables the visitors to be comfortable, but it will still be constructed in a temperate manner. In an attempt to comfort the visitor, the induction center cannot misrepresent the temperate lifestyle.

1. Function: To greet new arrivals and answer inquiries into the mission.
2. Requirements: This area will provide a space for the person who will greet the visitors. It will also have a place to display pamphlets and other information. It will be a public area, but it will only need to accommodate 5 people at one time.

3. Adjacencies: Temperance Threshold, Assembly Hall, Bourbon Street
4. Area: 120 ft²

C. Viewing Platform

It is important to remember that temperance involves a change in perception rather than a change in physical characteristics. For this reason, the mission will have a viewing platform much like the balconies of the French Quarter. The viewing platform will serve as another way to allow the temperate activities of the mission to be observed on Bourbon Street. Although many of the physical characteristics of the viewing platform will be similar to those of the balconies, the atmosphere of the viewing platform will demonstrate a distinct difference between the uses. From the street, visitors of Bourbon Street will be able to experience and question this difference.

1. Function: The balconies of the French Quarter are used to view other people and to allow people in the street to view the inhabitants of the balcony. The viewing platform of the mission will be used for the same purpose, but its use will be defined by temperance rather than gluttony.
2. Requirements: Look to the other balconies of the French Quarter for precedents of how they function. This viewing platform will allow interaction with the street just as the other balconies do. It will be viewed by the public, but it will not be a public space.
3. Adjacencies: Bourbon Street
4. Area: The area will depend on the width of the building, but the platform will not extend past the edge of the sidewalk.

D. Assembly Hall

The Assembly Hall will be a space that provides an opportunity for subtle recruitment. While the missionaries and guests are gathered for meetings and instruction, the sounds and sights of the activities will flow onto Bourbon Street. To accomplish this, the space will be defined but allow passers-by to experience the occurrences within the mission. It will arouse their curiosity and tempt them to cross the Temperance Threshold to discover more about the mission. Again, the austere, practical manner of construction will convey a feeling of temperance much like the meeting houses of the Shakers did.

1. Function: A gathering space for all missionaries and guests to hold group meetings and activities.
2. Requirements: Look to Puritan, Amish, Quaker, and Shaker examples of Assembly Halls. Seating will be along the sides and will be permanent. There will be an open space in the center for speaking and activities. It will seat around 35 people. The Assembly Hall will use as much natural lighting as possible.

Storage space will be provided. It will be one of the more public areas of the building.

3. Adjacencies: Temperance Threshold, Induction Center, Bourbon Street
4. Area: 700 ft²

E. Instructional Chapel

The Instructional Chapel will operate in a similar manner to the Assembly Hall. The difference is that it will focus on smaller, more personal groups. Like the Assembly Hall, it will be a defined space but allow the people of Bourbon Street to hear and witness the activities. Instead of speaking directly to the people of Bourbon Street, the encouragement and instruction will happen indirectly. This will allow subtle recruitment to occur. The visitors will have the opportunity to hear about temperance without the pressure of actually entering the mission.

A close, intimate space that encourages discussion is important for the Instructional Chapel. The missionaries will bring small groups of guests into the chapel for instruction about the temperate lifestyle. Spaces such as the Instructional Chapel must not force temperance on the guests. The chapel simply will present an opportunity so that the guest may make a decision to lead a temperate life. Once again, the construction of the space should exercise restraint to serve as an example of temperance.

1. Function: An area used to provide the guests with instruction on the subject of temperance.
2. Requirements: This will provide seating for smaller groups of about 10 people with temporary (movable) furniture. This area will have electrical requirements for videos, etc. It will be near the more public area of the building.
3. Adjacencies: Outdoor Work Area, Bourbon Street
4. Area: 20 ft²/person = 200 ft²

F. Workshop

Workshop: a room, area, or establishment where manual work is done

The workshop will operate efficiently like a machine. No distractions will be present so that the space is conducive to diligent work. Imagine entering a room full of typewriters and machines where the only sound is the clicking of the keys and the grinding of the machine gears. When entering the workshop, one will feel this air of production.

The work ethic and nature of the space will demonstrate temperance. Some aspects of this temperance will find their way to Bourbon Street to educate the people about the temperate lifestyle of the missionaries. In this manner, the workshop will serve as another means of subtle recruitment.

1. Function: A room that provides all of the necessary equipment for producing pamphlets, etc.
2. Requirements: Computer technology, office equipment, workspaces, supply storage. This space will provide the typical electrical equipment for computers and equipment. Minimal artificial lighting will be necessary. This space is a semi-public area that will accommodate 6 people.
3. Adjacencies: Outdoor Work Area, Bourbon Street
4. Area: $30 \text{ ft}^2/\text{person} (180 \text{ ft}^2) + \text{storage} = 210 \text{ ft}^2$

G. Mission Headquarters

The headquarters will project a business-like atmosphere, and the design of the space will be guided by temperance.

1. Function: A space for the director who coordinates the business of the mission and activities of the missionaries.
2. Requirements: This space must provide all of the furnishings (desk, storage, etc.) of an office. Electrical requirements will be that of a typical office. It must be situated next to the public spaces, but it is a private office.
3. Adjacencies: Induction Center
4. Area: 100 ft^2

H. Living Quarters

During their daily walks of Bourbon Street, the missionaries will be inundated with gluttony and temptations. A separate, private entrance into their living quarters will provide an escape for them. It should make the missionaries feel as if they have reached a safe haven protected from Bourbon Street.

Within the mission, the missionaries and guests will be provided with only the necessities. Anything in excess will work against the idea of temperance. Their living quarters will reflect this idea and feeling through the furnishings and design. Everything will be designed to the minimum required sizes so that the cells are small, but adequate. The furnishings will be as simple as the design of the space. Living in the mission will allow the missionaries and guests to understand that they are truly practicing a temperate lifestyle.

1. Missionary Cells

- a. Function: Similar to a dorm, basic and functional, accommodates 2 people
- b. Requirements: space for 2 twin beds, closet, desk, chest of drawers. These rooms are to be private. The public will not have access to this area. The missionaries and guests should have a separate entrance (other than the Temperance Threshold, or main entrance). Only natural lighting may be used.

- c. Adjacencies: Private entrance, Sanitary Station, Outdoor Work Area, Utility Room, Bourbon Street
- d. Area: Approximately 190 ft² per room, only necessities.
Total area = 1,140 ft².

2. Guest Cells

- a. Function: Similar to a dorm, basic and functional, accommodates 2 people
- b. Requirements: space for 2 twin beds, closet, desk, chest of drawers. These rooms are to be private. The public will not have access to this area. The missionaries and guests should have a separate entrance (other than the Temperance Threshold, or main entrance). Only natural lighting may be used.
- c. Adjacencies: Private entrance, Sanitary Station, Outdoor Work Area, Utility Room, Bourbon Street
- d. Area: Approximately 190 ft² per room, only necessities.
Total area = 1,140 ft².

I. Sanitary Stations

In the Sanitary Stations and all other similar areas, only the basic necessities will be provided. The design of these spaces will also demonstrate only minimal, basic construction so that the goals of temperance are fulfilled.

- 1. Function: To provide only the basic sanitary necessities for missionaries and guests
- 2. Requirements: showers, toilets, lavatories. Minimal lighting will be necessary as these spaces may be used at night. These are in the private area of the building.
- 3. Adjacencies: Living Quarters
- 4. Area: 520 ft² total

J. Sustenance Preparation

In Sustenance Preparation and all other similar areas, only the basic necessities will be provided. The design of these spaces will also demonstrate only minimal, basic construction so that the goals of temperance are fulfilled.

- 1. Function: A space to prepare all of the meals for the missionaries and guests.
- 2. Requirements: All basic kitchen equipment for food preparation (oven, stove, sink, refrigerator, freezer), storage, counters. The basic electrical requirements for a kitchen will be provided.
- 3. Adjacencies: Sustenance Distribution
- 4. Area: 200 ft²

K. Sustenance Distribution

Sustenance: something, especially food, that sustains life or health

The Sustenance Distribution area must provide the same sense of temperance that all of the other areas of the building supply. Again, simple, basic construction and furnishings will fulfill the goals of temperance. This space is not a typical cafeteria or dining room. In a cafeteria or dining room, there may be many different types and an abundance of food served. However, sustenance indicates simply the necessities to maintain the health of the missionaries and guests. Serving and eating only what is necessary, no excess, reflects true temperance.

1. Function: A space to accommodate all missionaries and guests so they can share meals.
2. Requirements: An area where a line can form for sustenance distribution, seating for approximately 25 people, furniture will be permanent. This space will be a semi-public area.
3. Adjacencies: Sustenance Preparation, Living Quarters
4. Area: $15 \text{ ft}^2/\text{person} (375 \text{ ft}^2) + \text{area for line} = 450 \text{ ft}^2$

L. Utility Room

In the Utility Room and all other similar areas, only the basic necessities will be provided. The design of these spaces will also demonstrate only minimal, basic construction so that the goals of temperance are fulfilled.

1. Function: To provide the equipment to launder clothes and other items.
2. Requirements: 3 washing machines, 3 dryers, irons, small seating area, counter space. All equipment will be compact and stacked washer/dryer units for efficiency of space. All necessary electrical accommodations will be made for the equipment. This will be a private area.
3. Adjacencies: exterior for ventilation, Living Quarters
4. Area: 120 ft^2

M. Outdoor Work Area

"Idle hands are the devil's workshop." In keeping with this proverb, a space will be designed to accommodate the outdoor activities of the missionaries and guests. It will be a pleasant area away from the chaos of Bourbon Street where the missionaries and guests can spend their spare time. Although more extravagant than the outdoor work area, the courtyards of the Spanish missions are a good example of outdoor mission areas. Just as the Assembly Hall and Instructional Chapel will serve as a means for subtle recruitment, glimpses of the outdoor work area will be offered to the public in an effort to teach temperance.

1. Function: An exterior space for manual work.
2. Requirements: Gardens, public will have glimpses of the outdoor work area from the street, only missionaries and guests will have access. The Living Quarters and the Instructional

Chapel will surround the outdoor work area. These adjacencies are reminiscent of the Spanish Mission Style.

3. Adjacencies: Living Quarters, Instructional Chapel, Workshop, Bourbon Street
4. Area: The area of the outdoor work area depends on the design of the building. It will not be less than 500 ft².

N. Electrical

In the electrical spaces and all other similar areas, only the basic necessities will be provided. The design of these spaces will also demonstrate only minimal, basic construction so that the goals of temperance are fulfilled.

1. Requirements: Electrical requirements for the mission will be kept to a minimum. Natural daylighting will be maximized.
2. Adjacencies:
3. Area: Electrical will comprise only three percent (163 ft²) of the total area of the building.

O. Mechanical

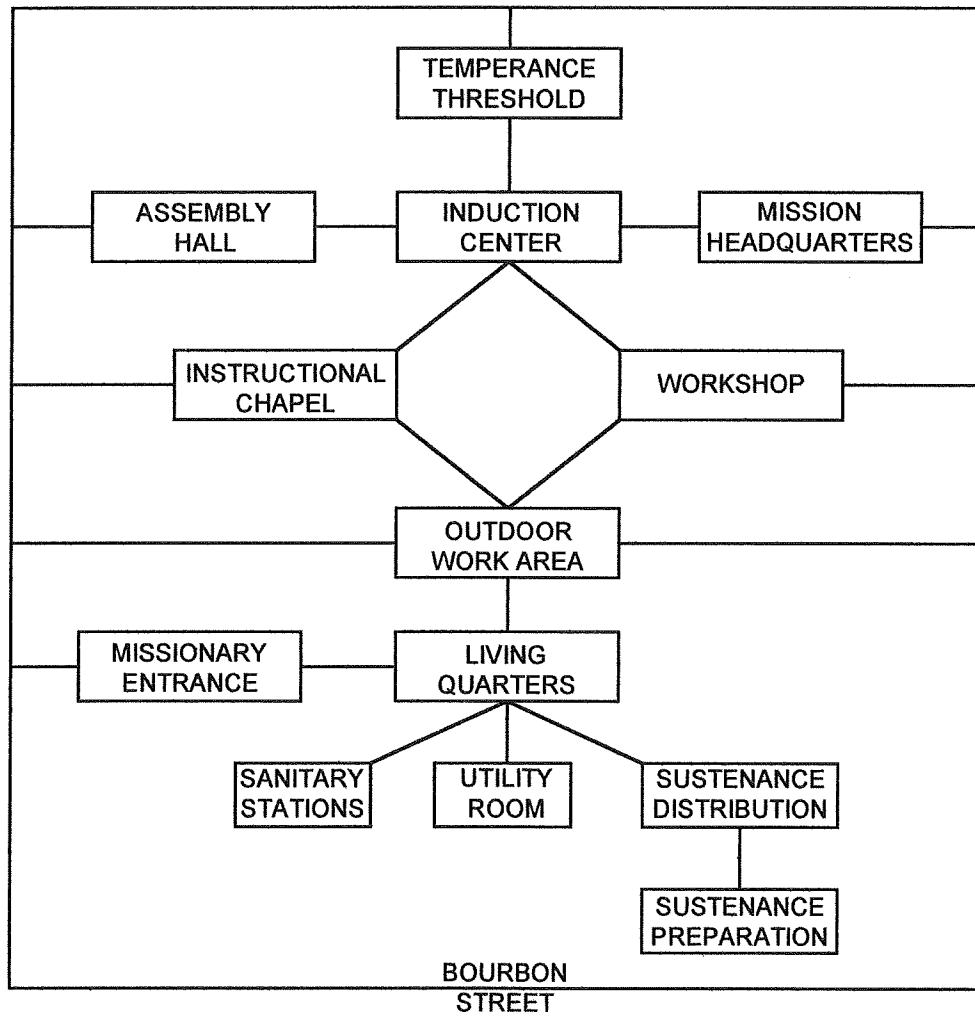
In the mechanical spaces and all other similar areas, only the basic necessities will be provided. The design of these spaces will also demonstrate only minimal, basic construction so that the goals of temperance are fulfilled.

1. Requirements: The mechanical system must be contained within the building. It must be situated at the perimeter for ventilation.
2. Adjacencies: exterior for ventilation
3. Area: Mechanical will comprise only five percent (272 ft²) of the total area of the building.

Efficiency – The mission must be totally efficient so that the building itself is an example of temperance. There will be no wasted space. The allowed tolerance is 0%.

Excluding the Outdoor Work Area, Viewing Platform, and Temperance Threshold the total area equals 5,435 square feet.

ADJACENCY DIAGRAM



CODE REQUIREMENTS

Under the Standard Building Code, the mission could be classified as a mixed occupancy because it will combine Assembly (Group B) and Residential (R-2). It may be classified as a single occupancy if the building complies with the most restrictive construction requirements for height and area limitations, fire protection, etc.

The mission falls primarily under the residential classification in the Life Safety Code. Assembly is not used because the occupancy will not exceed fifty people. Chapter 16, New Hotels and Dormitories, will be used in the design of the mission.

This project must comply with all of the requirements of the American Disabilities Act.

The exit requirement for assembly buildings of 50 people or less is two. Because no space in the mission will exceed an occupancy of 50 people, two exits must be provided from every assembly space (Assembly Hall, Instructional Chapel, etc.)

