

Summer 6-27-2023

Empowering Student Success: Unlocking the Potential of Project-Based Steel Design Education

Aly Mousaad Aly
aly@lsu.edu

Follow this and additional works at: https://digitalcommons.lsu.edu/aeee_pubs



Part of the [Civil and Environmental Engineering Commons](#), [Educational Technology Commons](#), [Engineering Education Commons](#), [Manufacturing Commons](#), [Operations Research, Systems Engineering and Industrial Engineering Commons](#), and the [Structures and Materials Commons](#)

Recommended Citation

Aly Mousaad Aly "Empowering Student Success: Unlocking the Potential of Project-Based Steel Design Education," AISC Educator Workshop, Chicago, IL, June 26-28, 2023.

This Article is brought to you for free and open access by the Department of Agricultural and Extension Education and Evaluation at LSU Digital Commons. It has been accepted for inclusion in Faculty Publications by an authorized administrator of LSU Digital Commons. For more information, please contact ir@lsu.edu.

Empowering Student Success: Unlocking the Potential of Project-Based Steel Design Education

Aly Mousaad Aly, Ph.D., P.E., M.ASCE

Associate Professor

Windstorm Impact, Science and Engineering (WISE) Research Lab

Civil and Environmental Engineering

Louisiana State University

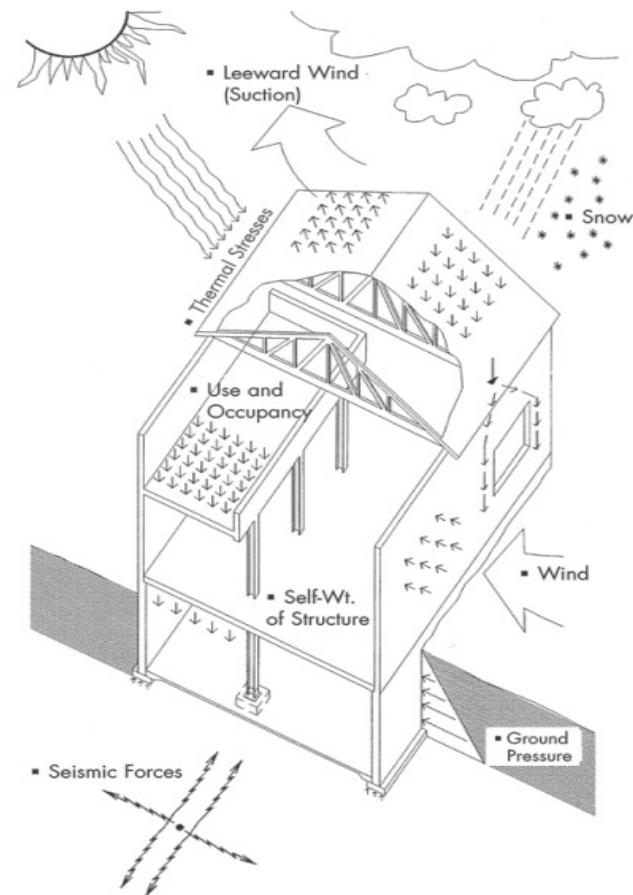
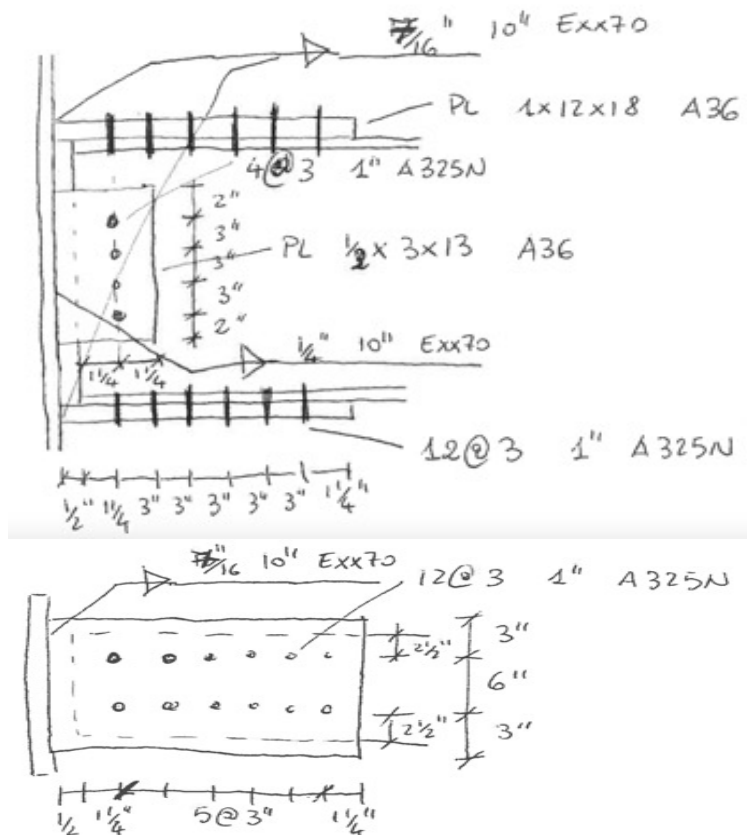
June 27, 2023

AISC Educator Workshop, Chicago, IL, June 26-28, 2023.



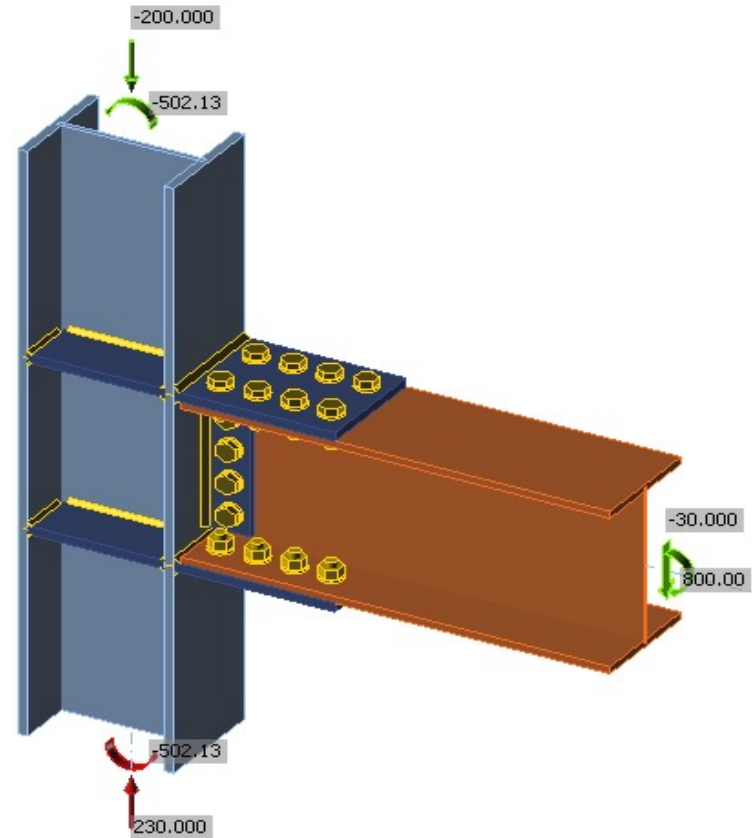
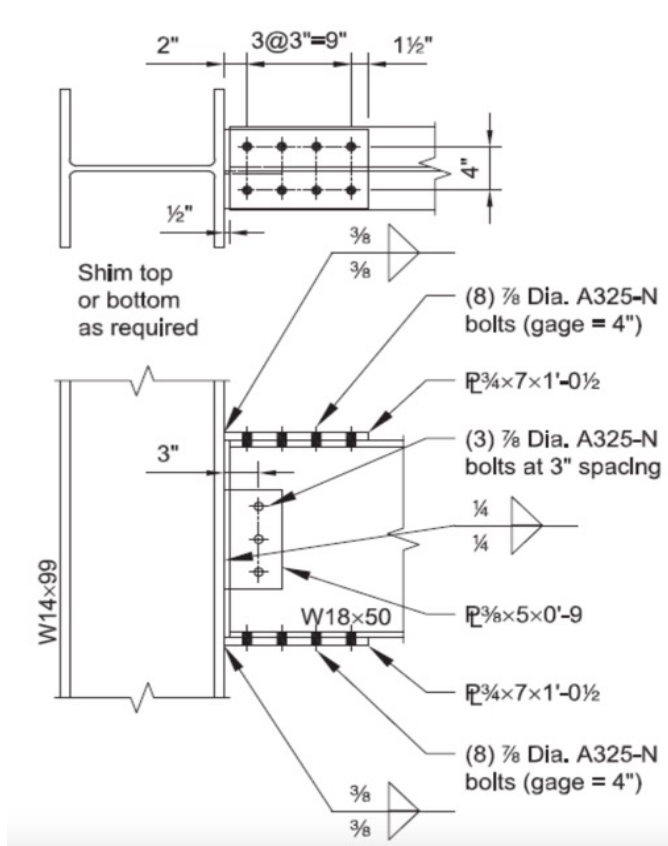
Challenges in Steel Design

Steel design involves abstract concepts like structural analysis, load distribution, and material properties, which can be challenging for students to visualize and comprehend.



Strategies for Overcoming Challenges

Incorporate visual aids, such as 3D models or animations, to help students visualize the structural behavior and reinforce their understanding



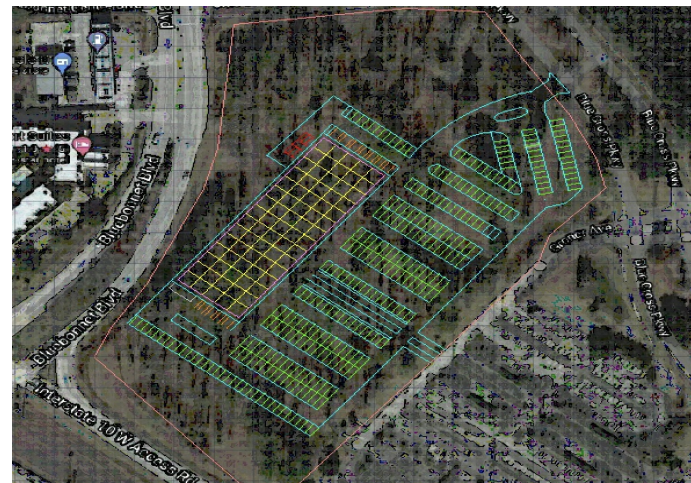
Strategies for Overcoming Challenges

- **Hands-on Activities:** Integrate hands-on activities, like building small-scale models or conducting structural experiments, to engage students and reinforce their understanding of the principles.
- **Steel Bridge Project:** Students understand the physics by examining the various members and their roles in deflection. They explore the effects of adjusting member size, adding bracing, and tightening joints, among other factors.



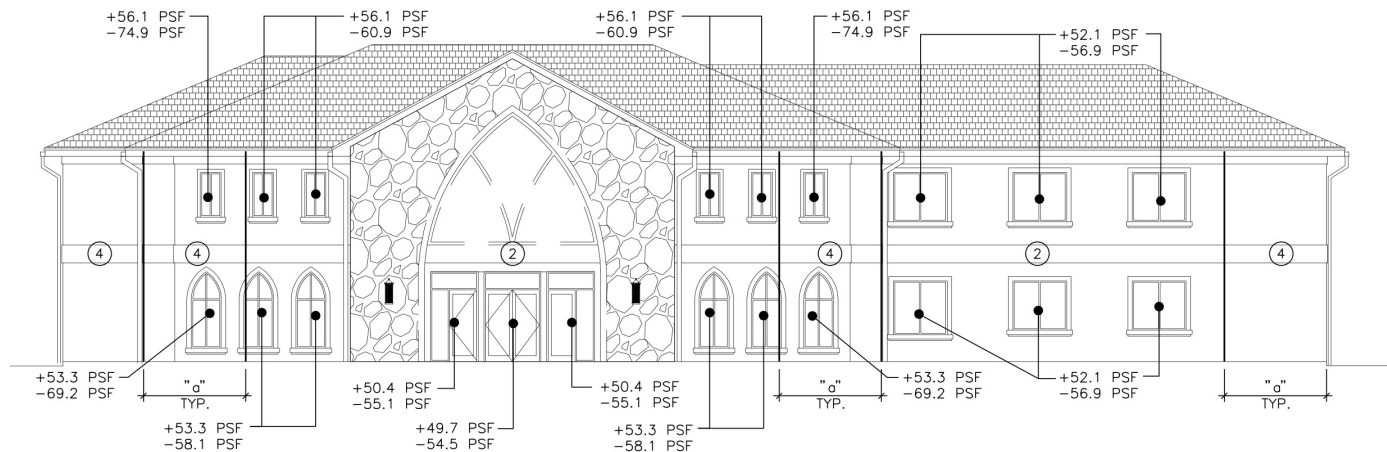
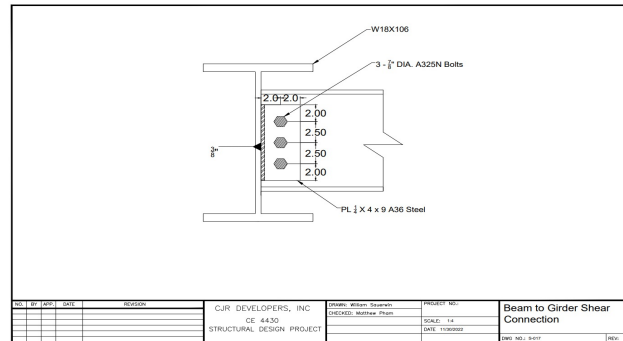
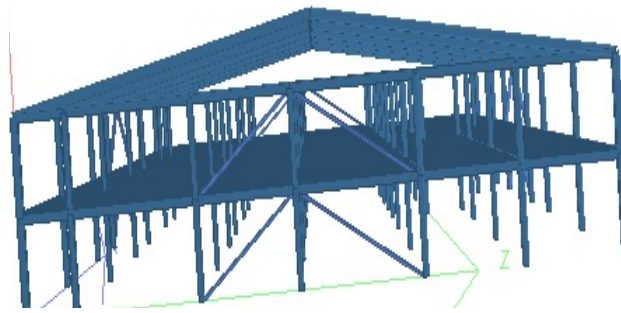
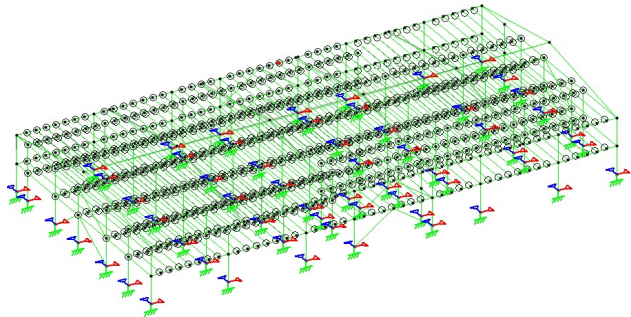
Project-Based Learning

- Design and Optimization of Steel Structures: Developing efficient steel structures, by using advanced techniques and analysis.
- Construction Drawings, Design Report, Computer Utilization: using computer-aided design (CAD) and structural analysis software (STAAD).
- Cost Estimate: to assess the financial aspects of steel structure projects.
- Monthly Progress Reports, Biweekly Team Work Logs, Periodic Assignments: to ensure ongoing project evaluation and accountability.
- Peer Evaluation and Quality Control: Foster a collaborative learning environment by encouraging students to evaluate each other's work and maintain high standards of quality.



The floor plan illustrates a building layout with the following features and dimensions:

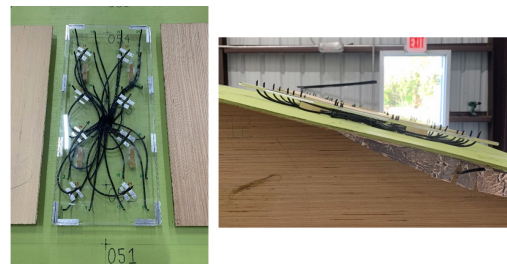
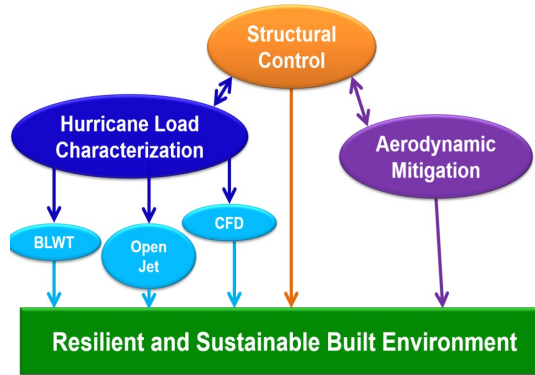
- Open Cubicle Space:** 60' x 90' (left side) and 65' x 40' (right side).
- Lounge:** 60' x 20' (bottom left) and 20' x 25' (center).
- Conference Room:** Located in the upper right quadrant.
- Kitchen:** 20' x 35' (center).
- Equipment Room:** Located below the kitchen.
- File Room:** Located to the right of the equipment room.
- Reception:** 20' x 20' (bottom center).
- Restrooms:** Multiple Male and Female Restrooms are distributed throughout the plan.
- Offices:** Several individual Office spaces are located along the top and right walls.
- Entrance:** Located at the bottom center.
- Stairs:** Located at the top left and bottom right.
- Dimensions:** Wall dimensions are marked in feet (e.g., 40, 25, 10, 20, 15, 20, 25, 10, 30).
- Scale:** A scale bar at the bottom indicates 240 units.



Importance of Effective Teaching Aids

- Open-source software, multimedia presentations, and the internet simplify complex concepts and capture students' attention.
- Active student participation leads to deeper understanding, better retention of knowledge, and enhanced critical thinking skills.
- Teaching aids promote teamwork, collaboration, and improve problem-solving abilities.
- Hands-on application of concepts through teaching aids facilitates better understanding.
- Effective use of teaching aids enhances communication, presentation skills, student engagement, motivation, and prepares students for real-world challenges.

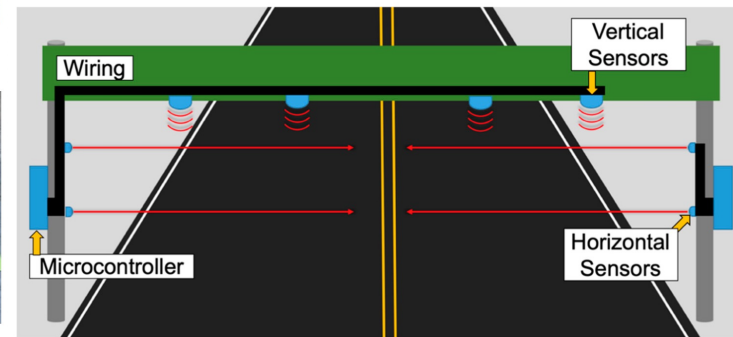
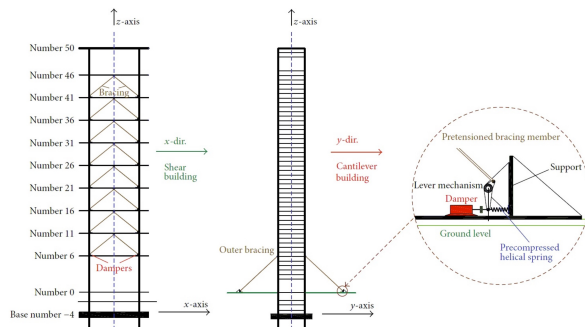
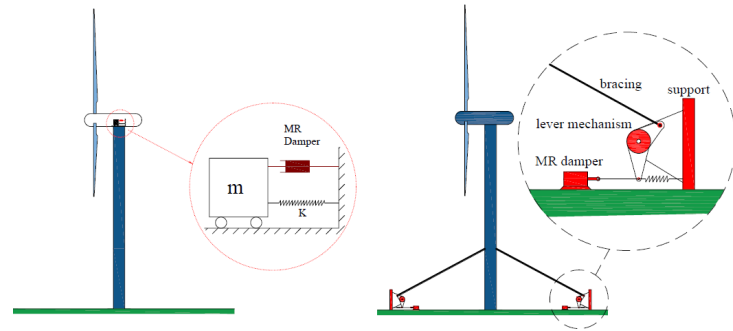
WISE Research @LSU: wise.lsu.edu



Active panel outfitted with pressure taps and affixed to the roof.



Gable roof with solar PV panels



Thank you.

Questions

aly@LSU.edu