

Fall 10-1-2001

# Lumières, Fall 2001

Louisiana State University and Agricultural & Mechanical College

Follow this and additional works at: <http://digitalcommons.lsu.edu/foll>

---

## Recommended Citation

Louisiana State University and Agricultural & Mechanical College, "Lumières, Fall 2001" (2001). *Friends of the LSU Libraries*. 57.  
<http://digitalcommons.lsu.edu/foll/57>

This Article is brought to you for free and open access by the Libraries at LSU Digital Commons. It has been accepted for inclusion in Friends of the LSU Libraries by an authorized administrator of LSU Digital Commons. For more information, please contact [gcoste1@lsu.edu](mailto:gcoste1@lsu.edu).

# LUMIÈRES

## We're ready, we're waiting, open the doors!

We're ready, we're waiting, open the doors. On Thursday, September 27, 2001, volunteers braced themselves for the crowd about to appear. The crowd in line was ready, waiting, and wanting the doors to open. **Billy Hebert** was so excited about the Book Barn he left French Settlement at four in the morning to be the first in line. The customers never stopped coming. The annual Book Bargain of the Friends of the LSU Libraries was held at the 4-H Mini Barn on LSU campus from September 27-29. Bazaar chairman **Pat Hoth** said about 70,000 books were taken from the processing and storage area in Middleton Library on moving day, Tuesday, September 25. All these books were donated to the Friends by the community; after being sorted, priced, packed, and unpacked again they were sold to the public. The money raised is dedicated to the purchase of special books by the LSU Libraries. It was another record year for the Friends; approximately \$80,000 was made at the bazaar and this will be combined with \$8,000 from the year-round text book sales to give an approximate total of \$88,000. That's a lot of money representing a lot of work by many volunteers.

Chairman Pat Hoth's assistant chairman was **Marilyn Dial**. The Bazaar Committee consisted of Book Barn Chairman **Marion Spann** and co-chair **Eilleen Kean**; adviser **Cherry Owen**; secretary **George Ann Brown**; Treasurer **Dodie Edmonds** assisted by **Pat Millican**; Thursday cashier **Sue Edrington**, Friday cashier **Judy Noland** with co-chair **Kathy Tillson**, Saturday cashier **Anne Wilson**; Back Door Express **Jo O'Connell**; line coordinator **Anne West**; volunteer chairman **Deloris Bitting** with co-chair **Beth Kernion**; collections chairman **Stacy Garrett**; arrangements chairman **Mary Lou Loecheit** and committee **Carolyn Wright** and **Mattie Duvic**; boxes **Lucy Mayfield**; adviser **Millicent Kopfinger**; publicity chairman **Phyllis McKay** with print **Lela Weber**; LSU **Mary Lou Hutchinson**, radio **Shirley Sands**, and scrapbook **Nora Grigsby**; information chairman **Ruth Wilkinson**; hospitality chairman **Fran Adcock** with co-chair **Carolyn Wright**; sales chairman **Edwina Ewell**; transportation chairman **Lois Petrilak** with committee **Charles Petrilak**.

Bazaars can be fun, bazaars can be headaches, bazaars can be unpredictable. This year's award for practicality in an unpredictable situation goes to the box brigade. As the bazaar neared closing Saturday afternoon and the time came to pack up the books, it was found that all the carefully stored boxes were locked up and no key fit the lock. So, volunteers formed a human chain from one building to another passing along hundreds of cardboard boxes from hand to hand. The books were packed up and the successful bazaar was over!



*"We're waiting" say  
Nora Grigsby and Kay  
Harrison.*



*"We're ready."*



*"Open the doors" say the volunteers.*

## From Our President

Dear Faithful Members,

The past six months have had their share of joy and sorrow. Through the splendid efforts of Vice Chancellor and Provost, **Daniel M. Fogel**, a new location has been found for our ongoing book processing center. While we will no longer be situated in the heart of the campus, we will still enjoy a presence there. Also, the space we will occupy should be more suited to our needs. We hope to be at our new location in the early part of the new year. I should also mention much credit for a successful conclusion to our search goes to the members of the search committee including **Marion Spann, Ann West, Eileen Kean, Jo O'Connell** and **Gwen Cook**.

Despite the pall which enveloped the nation in the aftermath of our common tragedy, this year's Book Bazaar was an immense success. I had concerns about the turnout, but I discovered on the first day of the sale that my concerns were completely unfounded. Our wonderful volunteers encountered a stream of old friends whose enthusiasm was undiminished and who bought with abandon. The results are not yet final, but it appears that this year's bazaar may well be a record-setter. Many, many thanks to **Pat Hoth**, this year's Chairman, and the countless volunteers who made the bazaar a success.

But there has also been sad news to mix with the many joys that have blessed us in recent months. **Sarah Sue Goldsmith**, formerly a member of our board and publicity chairman, died in September. I had the pleasure of being acquainted with her for more than a decade, and on behalf of the Friends, I offer condolences to her three sons and parents. **Robert Holtman**, a new member of the Board of Directors, died a few weeks ago. Thirty years ago I was one of his students and owe him much for the emphasis he placed on the critical approach to historical studies. Bob Holtman's late wife, **Bill** was an active volunteer in the Friends organization and editor of this newspaper for many years. Our sincere condolences to his daughter Martha and his son Steve on the loss of their father.

As the last year of my term as president draws to a close, I want to thank you all for the confidence you have placed in me and the many instances of support and encouragement I have received from you all. We faced a great many changes, but I am confident all will go well and that this organization will continue to build on past successes.

*Best wishes,  
Richard H. Kilbourne, Jr.  
President*

## From the Dean



*Dean of the LSU Libraries, Jennifer Cargill.*

New software for online catalog. Since 1986, the LSU Libraries' catalog has been automated using software from a company formerly known as NOTIS. During the 1990s, a total of 27 academic libraries in Louisiana were automated using the software, which is now old technology with limited vendor support.

During the regular 2001 legislative session, the Board of Regents was able to obtain funding for the 27 libraries to migrate to new, more sophisticated software, SIRSI's UnicornLINK. LSU Libraries will be in the first group to migrate. Over the summer, many hours have been spent determining policies and implementation with the new system. Numerous staff within LSU Libraries will be spending lots of time over the next few months working on this critical project. New workstations will be available as a result of the legislative funding. If the projected schedule is followed, and there are no unanticipated complications, we should be using the new online catalog system by spring 2002.

**Library newsletter.** The latest issue of the LSU Libraries' Library Services Update is available on the library website <http://www.lib.lsu.edu> under the heading "newsletter."

**Facilities.** Generous contributions from donors will enable us to acquire a new reference desk during this semester. While the desk is being ordered and rewiring is being done, the reference service point has been moved to a temporary location near the front of the reference department.



*Opening the Bazaar were (L to R), Paul Coreil, Vice Chancellor and Director, LSU Ag Center; Nancy Colyar, Assistant Dean LSU Libraries; Richard Kilbourne, President of the Friends' Board; DeLaine Emmert; and Pat Hoth, Chairman of the 2001 Book Bazaar.*

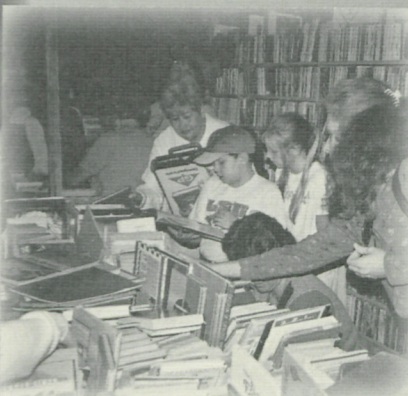
# The Customers Enjoyed the Bazaar



*The magic of books*



*It must be in here somewhere.*



*Look what I found!*

# And so did the Volunteers



*L to R Anne West, Lettice Counce,  
Marion Spann, Seth Lewis*



*L to R Sonni Muller, Joy Drilling,  
Eunice Landolt, Barbara Shea*



*L to R Murphy Robert, Richard  
McKay, Adrian Moore, Pat Weber*

## Memorials

In memory of Dr. & Mrs. Irvin Berg

*Dr. and Mrs. Alvin L. Bertrand*

*Don Moore*

*College of Arts & Sciences*

*Pauline N. Pepinsky*

In memory of Eva Carraway

*The Book Club*

In memory of St. John Chilton

*Mr. and Mrs. J. Huntington Odom*

In memory of Sarah Sue Goldsmith

*Caroline Wire*

In memory of Robert Holtman

*Caroline Wire*

In memory of Dorothy Morgan

*Patricia B. Millican*

In memory of Richard Sands

*Eileen M. Kean*

*Ruth M. Wilkinson*

In memory of Charles Bryant Smith

*Eileen M. Kean*

*Ruth M. Wilkinson*

*Caroline Wire*

In memory of Helen Smith

*Thirty-Niners Book Club*

In memory of Paul B. Stephenson

*Mr. and Mrs. Ralph Stephenson*

In memory of Hazel Thompson

*Mr. and Mrs. Ralph Stephenson*

The Friends would like to thank  
**Coca-Cola, Community Coffee and  
Kentwood Water** for their generous  
donations to the bazaar.

LUMIÈRES • Editor, Liz Beven

Literally "lights" in French, Lumieres is frequently used to denote enlightenment or knowledge. As such, it illustrates the purpose of the newsletter: To enlighten members of the Friends of the LSU Libraries with the News of the organization and with the needs of the LSU libraries. The cover design is based on an exquisite hand-illuminated border from a 15th century French religious manuscript.

LUMIÈRES is published by  
the Friends of the LSU Libraries

16 Middleton Library

Baton Rouge, LA 70803

225/578-5925

Fax 225/578-6825



LSU IS AN EQUAL OPPORTUNITY/ACCESS UNIVERSITY

Printed by LSU Graphic Services

6C • LSU/DS • 27930 • 1101

## OFFICERS

Richard Kilbourne, *President*  
Virginia Grenier, *Vice President*

Gwen Cook, *Secretary*  
Jo O'Connell, *Treasurer*

## Classes of Membership

- ☐ A. Individual and Family .....\$25
- ☐ B. Sustaining (annually; checkout privileges) .....\$50
- ☐ C. Patron (annually; individual or corporate) .....\$100
- ☐ D. Corporate (annually) .....\$500
- ☐ E. Life .....\$1,000
- ☐ Check payable to LSU Foundation for Friends of the Libraries

Memberships of \$50 or more entitle one member of the family to library check-out privileges.

Name \_\_\_\_\_

Address \_\_\_\_\_

City/State/Zip \_\_\_\_\_

Date \_\_\_\_\_

Mail to: Friends of the LSU Libraries, 295 Middleton Library, LSU, Baton Rouge, LA 70803



**LOUISIANA STATE UNIVERSITY**

*Friends of the LSU Libraries*  
Middleton Library  
Baton Rouge, LA 70803

Non-Profit Org.  
U.S. Postage  
PAID  
Permit No. 733  
Baton Rouge, LA