

Fall 10-1-1992

## Lumières, Special Issue, Fall 1992

Louisiana State University and Agricultural & Mechanical College

Follow this and additional works at: <http://digitalcommons.lsu.edu/foll>

---

### Recommended Citation

Louisiana State University and Agricultural & Mechanical College, "Lumières, Special Issue, Fall 1992" (1992). *Friends of the LSU Libraries*. 38.  
<http://digitalcommons.lsu.edu/foll/38>

This Article is brought to you for free and open access by the Libraries at LSU Digital Commons. It has been accepted for inclusion in Friends of the LSU Libraries by an authorized administrator of LSU Digital Commons. For more information, please contact [gcoste1@lsu.edu](mailto:gcoste1@lsu.edu).



# LUMIÈRES

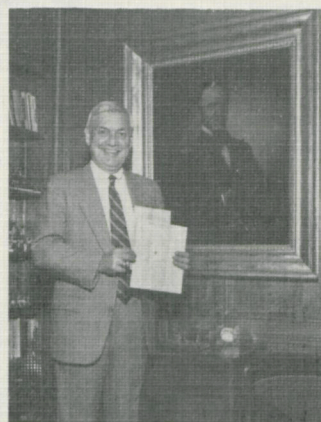
## 30 Years of Friendship

"The Library is the heart and core of the University." On April 7, 1962, Dr. N.M. Caffee called the first meeting of the Friends of the LSU Library to order with these affirming words. For 30 years, the Friends of the LSU Library have strengthened that heart in numerous ways—through publications, auctions, workshops, moral support, and through the extraordinary efforts of volunteers in the "Book Barn," whose diligent and unflagging efforts have produced a remarkable endowment of a half a million dollars for the library.

With funds generated by that endowment, more than 100 noteworthy resources for scholars—books, manuscripts, star charts, microfilm collections, recordings—have been added to the Libraries' collections. Virtually none of these could have been acquired without the endowment funding created by the Friends.

One of the most prestigious acquisitions was the Audubon Double Elephant folio *Birds of America* which was the result of an ambitious fund-raising drive by the newly formed Friends group. Since 1987, the conservation and preservation of single framed elephant folio prints owned by the LSU Libraries has been supported by the Friends.

In a special project to honor two sustaining members of the Friends, a fund drive over and above the usual fund-raising activities was undertaken in 1987. Two highly successful book auctions were held, in 1990 and 1992. The Goodrich-Taylor Graduate Assistantship fund was established through these fund-raising efforts. The first assistantship in special collections was awarded in 1992.



Purchase Committee Acquisition, 1978.

**CHANCELLOR  
WILLIAM E.  
DAVIS DISPLAYS  
TWO LETTERS  
WRITTEN BY HIS  
ADMINISTRATIVE  
PREDECESSOR,  
WILLIAM  
TECUMSEH  
SHERMAN, IN  
1860 AND 1861.**

This special issue of *Lumières* is devoted to thanking the Friends for their steadfast support. Pictured within are just a few of the many members of the University community who are grateful for the important resources the Friends have provided for so many years. To these scholars, and many others like them, your generosity and hard work have made a difference. They join the staff of the LSU Libraries in saying a heartfelt "Thank You!" for 30 years of friendship.






---

---

◀ PROFESSOR EMILY TOTH, DEPARTMENT OF ENGLISH, READS "THE WINTER SHIP," A POEM BY SYLVIA PLATH, PRINTED AT THE TRAGARA PRESS IN 1960. ONLY TWO COPIES OF THE POEM WERE PRINTED. THIS RARE PLATH ITEM IS PART OF AN ARCHIVE OF TRAGARA PRESS MATERIALS ACQUIRED TO COMPLEMENT THE LIBRARY'S EXTENSIVE COLLECTION OF BOOKS PRINTED AT THE PRESS. PURCHASE COMMITTEE ACQUISITION, 1990.

---

---



---

---

▶ JOHN CARAMBAT, SCHOOL OF ART, SKETCHES AS HE EXAMINES THE BASILISK PRESS FACSIMILE OF THE RENOWNED KELMSCOTT PRESS EDITION OF CHAUCER'S WORKS, WITH BORDERS AND INITIALS BY WILLIAM MORRIS AND ILLUSTRATIONS BY EDWARD BURNE-JONES. THE COMPANION VOLUME REPRODUCES MANY OF BURNE-JONES' ORIGINAL DRAWINGS FOR THE WORK. PURCHASE COMMITTEE ACQUISITION, 1975. THANKS TO THE GENEROSITY OF FRIENDS PRESIDENT JULIE HAMILTON, THE LSU LIBRARIES ALSO POSSESS A MAGNIFICENT COPY OF THE ORIGINAL KELMSCOTT EDITION.

---

---




---

---

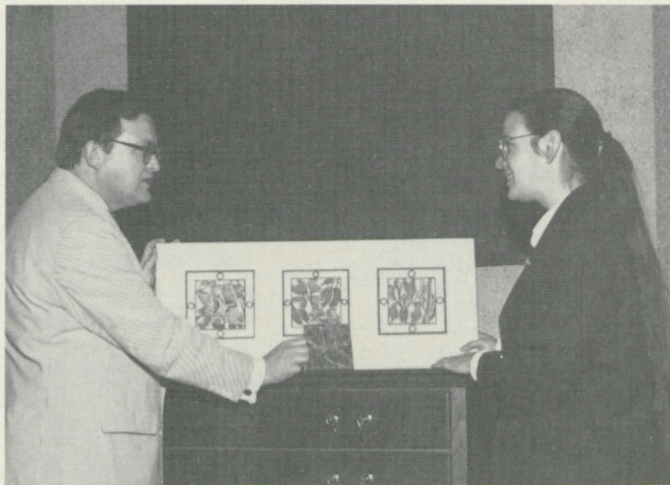
◀ THE LEDGER USED TO RECORD THE EXPENSES OF MARIE ANTOINETTE'S HOUSEHOLD UP TO AND DURING THE FRENCH REVOLUTION IS EXAMINED BY FAYE PHILLIPS, HEAD OF THE LSU LIBRARIES' LOUISIANA AND LOWER MISSISSIPPI VALLEY COLLECTIONS. PURCHASED WITH THE SUPPORT OF THE FRIENDS OF THE LSU LIBRARY PRIOR TO 1967.

---

---

*Photographs by Don Morrison*





▲ DIRECTOR OF THE LSU MUSEUM OF ART, H. PARROTT BACOT, TELLS ELAINE SMYTH, HEAD OF THE LIBRARIES' RARE BOOK COLLECTIONS, ABOUT ANGELA GREGORY'S WORK ON THE LSU CAMPUS. THESE DRAWINGS BY HER WERE PURCHASED BY THE FRIENDS AND ARE KEPT IN THE LOUISIANA AND LOWER MISSISSIPPI VALLEY COLLECTIONS. PURCHASE COMMITTEE ACQUISITION, 1988.



▲ ROBERT BECKER, ASSOCIATE PROFESSOR IN THE HISTORY DEPARTMENT, EXAMINES THE MANUSCRIPT OF BERNARDO DE GALVEZ' LAST WILL AND TESTAMENT. PURCHASE COMMITTEE ACQUISITION, 1991.

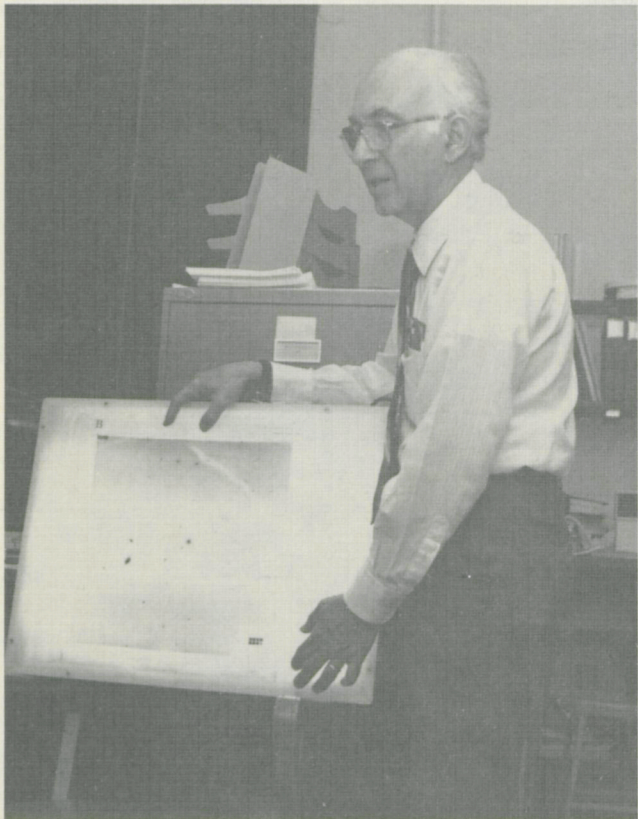


▲ PROFESSOR DOMINIQUE HOMBERGER, DEPARTMENT OF ZOOLOGY, DISPLAYS ONE OF THE STRIKING PLATES BY JOHN CASSIN IN THE UNITED STATES EXPLORING EXPEDITION, ATLAS, MAMMALOGY AND ORNITHOLOGY. PURCHASE COMMITTEE ACQUISITION, 1987.

► MICHELLE MASSÉ, ASSOCIATE PROFESSOR OF ENGLISH, PERUSES A NOVEL BY LOUISIANA WRITER ANNE RICE. THE BOOK IS PART OF A COLLECTION OF 36 FIRST EDITIONS, SOME AUTOGRAPHED BY THE AUTHOR. RICE'S FICTION IS OF INTEREST TO DR. MASSÉ, WHO OFFERS A COURSE IN HORROR FICTION. PURCHASE COMMITTEE ACQUISITION, 1991.








---

◀ **MANUSCRIPT FACSIMILES ARE A VALUABLE RESOURCE FOR SCHOLARS IN MANY DISCIPLINES. JESSE GELLRICH, ASSOCIATE PROFESSOR IN THE DEPARTMENT OF ENGLISH, STUDIES A FACSIMILE OF THE LUTTRELL PSALTER, ONE OF THREE MANUSCRIPT FACSIMILES ACQUIRED FOR THE RARE BOOK COLLECTIONS THIS YEAR. THEY ARE BEING USED BY FACULTY AND STUDENTS OF THE HISTORY, ENGLISH, AND ART HISTORY DEPARTMENTS. PURCHASE COMMITTEE ACQUISITION, 1992.**

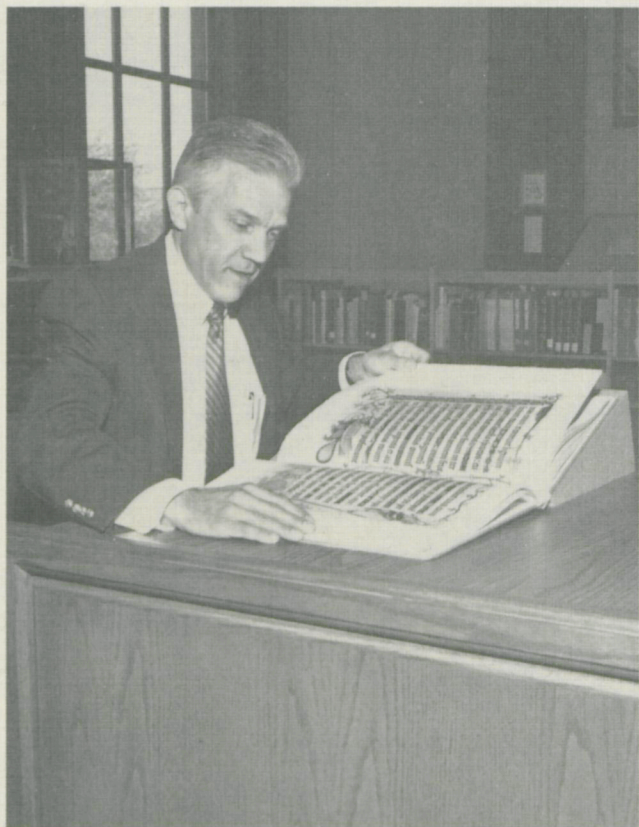
---




---

▲ **RICHARD CONDREY, ASSOCIATE PROFESSOR WITH THE COASTAL FISHERIES INSTITUTE, STUDIES HERMAN MOLL'S MAP OF THE WEST INDIES OR THE ISLANDS OF AMERICA, WHICH INCLUDES A DEPICTION OF THE MOUTH OF THE MISSISSIPPI DATING FROM THE EARLY 18TH CENTURY. DR. CONDREY USES MAPS AND OTHER MATERIALS IN SPECIAL COLLECTIONS TO RESEARCH THE ECOLOGICAL HISTORY OF THE STATE. PURCHASE COMMITTEE ACQUISITION, 1991.**

---




---

◀ **PROFESSOR ARLO LANDOLT, PHYSICS DEPARTMENT, DISPLAYS ONE SHEET OF THE MANY THOUSANDS THAT MAKE UP THE NEW PALOMAR OBSERVATORY SKY ATLAS. AN INVALUABLE TOOL FOR ASTRONOMERS AND PHYSICISTS, THE ATLAS IS IN CONSTANT USE. PURCHASE COMMITTEE ACQUISITION, 1988-1989.**

---

*Elaine Smyth, editor  
Head, Rare Book Collections*



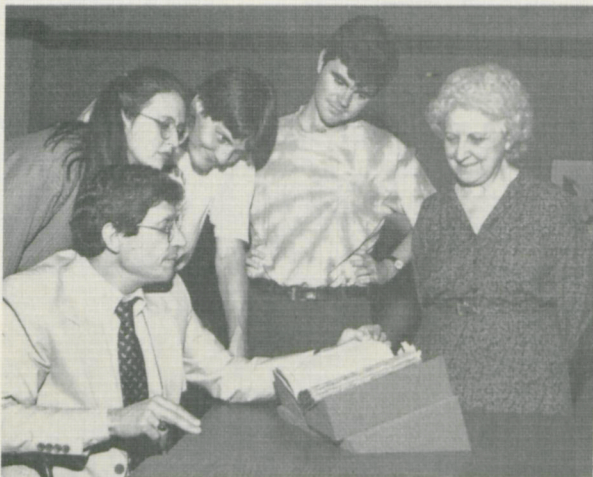


▲ **TOM CARLETON, ASSOCIATE PROFESSOR OF HISTORY, LOOKS THROUGH THE EMMETT EVERETT PHOTOGRAPH COLLECTION. INCLUDED ARE 214 IMAGES OF LOUISIANA DATING FROM 1925 TO 1928. PURCHASE COMMITTEE ACQUISITION, 1991.**



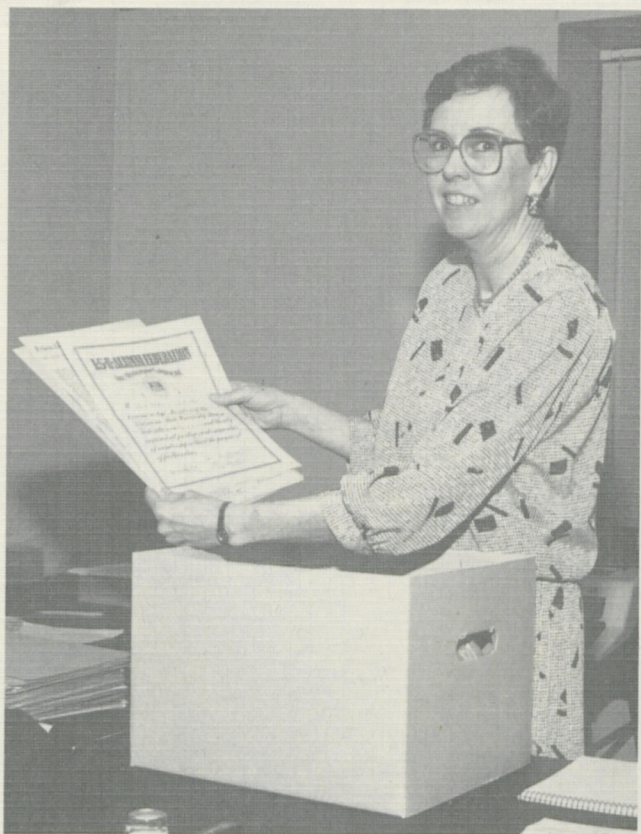
▲ **PROFESSOR LEWIS SIMPSON READS THE TRANSCRIPT OF AN INTERVIEW OF WALKER PERCY, WITH PERCY'S MANUSCRIPT EMENDATIONS. THE INTERVIEW, BY ASHLEY BROWN, INCLUDES ENLIGHTENING INFORMATION ABOUT PERCY'S WORKS. IT WAS EVENTUALLY PUBLISHED IN SHENANDOAH. PURCHASE COMMITTEE ACQUISITION, 1980.**

▶ **BOTANY GRADUATE STUDENTS ALAN LIEVENS (NOW A RESEARCH ASSOCIATE AT THE MISSOURI BOTANICAL GARDEN) AND HONORA BURAS CONSULT PRINTS FROM ONE VOLUME OF THE MASSIVE BANK'S FLORILEGIUM, WHICH MAKES AVAILABLE FOR THE FIRST TIME 738 ENGRAVINGS OF PLANTS COLLECTED DURING CAPTAIN JAMES COOK'S FIRST VOYAGE AROUND THE WORLD, 1768-1771. THE WORK IS A RICH SOURCE OF MATERIAL FOR BOTANISTS AND A BEAUTIFUL COLLECTION OF BOTANICAL ART. PURCHASE COMMITTEE ACQUISITION, 1983.**



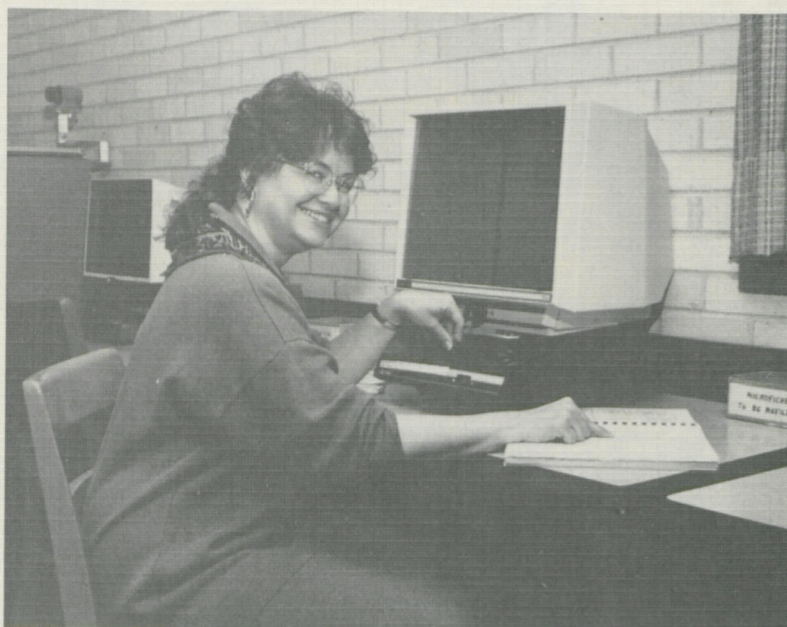
◀ **ENGLISH GRADUATE STUDENTS IN A BIBLIOGRAPHY SEMINAR GATHER TO HEAR PROFESSOR JOHN IRWIN FISCHER'S COMMENTARY ON AN 18TH CENTURY MANUSCRIPT VOLUME OF POEMS THAT INCLUDES WORKS BY JONATHAN SWIFT. SOME TEXT VARIANTS IN THE VOLUME MAY PROVE IMPORTANT TO SWIFT SCHOLARS. PROFESSOR FISCHER IS PREEMINENT IN THE FIELD. PURCHASE COMMITTEE ACQUISITION, 1992.**





▲ **LSU MEMORABILIA FROM THE JOHN H. OVERTON PAPERS IS DISPLAYED BY MERNA FORD, WHO WORKS WITH POLITICAL MANUSCRIPTS IN THE LOUISIANA AND LOWER MISSISSIPPI VALLEY COLLECTIONS. THE OVERTON PAPERS, WHICH ADD TO THE LIBRARY'S RICH COLLECTION OF POLITICAL MANUSCRIPTS, INCLUDE SOME 5,000 ITEMS DATING FROM THE PERIOD 1920 TO 1934. PURCHASE COMMITTEE ACQUISITION, 1991.**

▼ **PUBLISHING NATURE CLASSICS IS ONE OF THE PARTICULARLY OUTSTANDING WAYS THAT THE FRIENDS HAVE SUPPORTED THE LSU LIBRARIES. THIS HANDSOME CATALOG OF THE E. A. MCILHENNY NATURAL HISTORY COLLECTION HELPS TO SPREAD THE WORD ABOUT THE LIBRARY RESOURCES AVAILABLE HERE AT LSU. SHOWN HERE ARE FORMER CURATOR OF THE MCILHENNY COLLECTION KATHRYN MORGAN, DEAN OF LIBRARIES JENNIFER CARGILL, REFERENCE LIBRARIAN AND COMPILER OF THE CATALOG ANNA PERRAULT, AND AUTHOR OF THE INTRODUCTION TO THE CATALOG, DAVID LANK, GATHERED ON THE OCCASION OF THE 20TH ANNIVERSARY OF THE MCILHENNY COLLECTION AT LSU.**



▲ **CHARLES EAST, FORMER DIRECTOR OF THE LSU PRESS AND NOTED AUTHOR, STUDIES AN ALBUM OF CIVIL WAR ERA PHOTOGRAPHS THAT INCLUDES 200 VIEWS OF NEW ORLEANS, BATON ROUGE, AND VARIOUS LOCATIONS IN LOUISIANA. PURCHASE COMMITTEE ACQUISITION, 1977.**

▲ **PAMELA DEAN, DIRECTOR OF THE NEWLY ESTABLISHED T. HARRY WILLIAMS CENTER FOR ORAL HISTORY, USES THE MICROFICHE VERSION OF THE COLUMBIA UNIVERSITY ORAL HISTORY COLLECTION. PURCHASE COMMITTEE ACQUISITION, 1976.**