

Fall 10-1-1992

## Lumières, Fall 1992

Louisiana State University and Agricultural & Mechanical College

Follow this and additional works at: <http://digitalcommons.lsu.edu/foll>

---

### Recommended Citation

Louisiana State University and Agricultural & Mechanical College, "Lumières, Fall 1992" (1992). *Friends of the LSU Libraries*. 36.  
<http://digitalcommons.lsu.edu/foll/36>

This Article is brought to you for free and open access by the Libraries at LSU Digital Commons. It has been accepted for inclusion in Friends of the LSU Libraries by an authorized administrator of LSU Digital Commons. For more information, please contact [gcoste1@lsu.edu](mailto:gcoste1@lsu.edu).

# LUMIÈRES

## Giving to the LSU Libraries

Gifts to LSU Libraries are welcomed and are used with great care to enhance the libraries and the collections. Although LSU is a public university, state support does not cover all the needs of LSU Libraries.

Two questions often asked of me are: (1) how can people make monetary gifts to the LSU Libraries; and (2) how are these gifts used by the libraries?

There are a number of ways supporters can contribute monetarily to the LSU Libraries, an entity that consists of the following: the Troy H. Middleton Library which functions as the main library for LSU; Hill Memorial Library which houses Special Collections; the Chemistry Library in Williams Hall; the Design Resource Center in the New Design Building; the Library and Information Science Library in Coates; and the CEBA Reading Room, a small reserve collection.

**Book Bazaar**—The proceeds from the very popular annual Fall Book Bazaar sponsored by the dedicated Friends of the LSU Library are donated to the Libraries by the Friends. These monies are used to make purchases which cannot be afforded within the Libraries' materials budget, with a portion going to the Endowment Fund for LSU Libraries. The Friends' Endowment was established by the Friends' Board a number of years ago.

**Gifts**—The LSU Libraries also is pleased to accept gifts contributed in honor of individuals upon their graduation, upon receipt of an honor during their lifetime, to commemorate a career at the time of retirement, or for other milestones in the lives of individuals. The honoree is informed that a gift has been given to

the LSU Libraries in his/her honor. If you wish to honor someone in this manner, you may send your check, payable to LSU Foundation, to Caroline Wire, 295 Middleton, indicating the name and the address of the person you are honoring as well as your own name and address.

**Memorials**—Upon the death of an individual, friends, relatives, and colleagues may wish to honor the memory of the person through a monetary contribution to the LSU Libraries. Survivors may also want to indicate this preference in conversations with acquaintances or in the newspaper obituary. Such memorials should also be made payable to the LSU Foundation and sent to Ms. Wire in Middleton. We request that the person in whose memory the contribution is made and the name and the address of the survivor to be notified be clearly indicated so family can be made aware of the memorial to LSU Libraries.

**Other Gifts**—Many corporations have matching gift programs. Your employer may also have a matching gifts program which will increase the total of your contribution.

There are many other ways you can provide monetary benefit to the LSU Libraries. You can make an **outright monetary gift** that supports a specific acquisition for the libraries, and is selected by the trained library staff. You can establish an **endowment** for a subject area or in honor of an individual. Some of the endowments already established for LSU Libraries are in the memory of loved ones. As you do your **estate**

*See page 2*

planning, you may want to make arrangements for a contribution for the LSU Libraries. Bequests can take several forms: cash, stock, royalties, etc.

All contributions sent to LSU Libraries and made payable to the LSU Foundation will be invested for the future use of the libraries. By sending the contribution to the libraries, we can send our thanks to the donor as well as to the honored individual or the family of the deceased.

**Use of the Monies**—Monies that come to LSU Libraries through the Book Bazaar, through gifts or memorials, or through other monetary gifts, are used to purchase materials for the collection, subscribe to electronic databases, or make other needed purchases that enable the libraries to work

toward the mission of support of the curriculum and research of LSU. While we prefer that the donor not limit the area in which we make purchases, we will accept gifts for specific collection areas. The special issue which accompanies this Fall issue of *Lumières* is a photoessay devoted to the use of many of the purchases made from Friend's funds. It gives examples of both the types of materials acquired with Friend's funds and the use made of those materials.

Gifts and donations form a vital portion of the available funding for acquisitions for LSU Libraries. Your contributions are always greatly appreciated.

Jennifer Cargill  
Dean, LSU Libraries

## Annual Book Bazaar Parade of Treasures

The 17th annual book bazaar was held October 8-10 at the LSU Agricultural Center 4-H Mini-farm barn. Refreshments, compliments of Community Coffee and Coca-Cola of Baton Rouge, were available for the early arrivals who patiently waited in one of the longest lines in book bazaar history. The dignitaries who customarily cut the ribbon in the opening ceremony arrived this year in a parade of antique cars. The variety of vintage cars including a "Woody" were driven by members of the Model "A" Club: Charles Gonzales, Valdean Dykes, Aubrey Linder, Art Bowling, Leon Purdin, and Vincent Tortorich. The cars and occupants were greeted by Book Bazaar Chair Kathleen Roberts and the line of eager buyers. Riding in the cars were: Chancellor Rouse Caffey; Chancellor Bud Davis; Dean of LSU Libraries, Jennifer Cargill; Book Bazaar publicity chair, Beth Reames; campus publicity chair, Mitzi Bray; and "Mike the Tiger." The ribbon was cut at 9 a.m. and anxious buyers rushed to scoop up the "treasures" inside.

A record number of book donations were received this year which the diligent book barn/bazaar workers turned into record profits. The three-day sale collected over \$50,000 while the year-round textbook sales amounted to nearly \$10,000. The combined total presented to the LSU Libraries from the 1992 Book Bazaar was \$60,000!

Record donations enabled the offering of the highest number of volumes ever—59,000 for sale. An expanded sales category this year was art prints. Nineteen framed views of plantation homes and other prints were popular items which sold quickly. The art sales category was the special project of Katie Johnson. Framing was donated by Goudeau's Antiques, Gilley's Gallery, Taylor Clark Galleries, Frameworks Gallery, and Michaels. W.C. Bauer, a cousin of a volunteer, gave several

prints and art materials. The art sales alone generated nearly \$1,000.

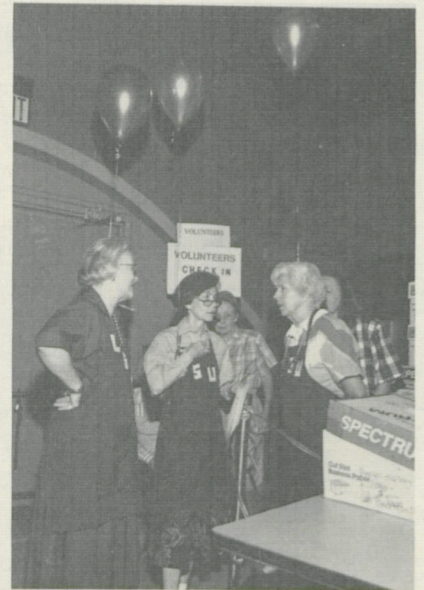
Congratulations go to Book Bazaar Chairman Kathleen Roberts and the entire crew of committee chairs and volunteers for the record breaking total of over \$60,000. The 1991 chairman, Jo O'Connell, served as adviser with another former chair, Anne West, as secretary. Head treasurer was Dodie Edmonds with assistant treasurer Pat Millican. Each day had a different person in charge of the moneybags: Thursday cashier chair, Sue Edrington; Friday cashier chair, Lynda Waguespack; Saturday cashier chair, Mary Lou Hutchinson. Anne West was in charge of the Back Door Express. The job of securing workers for the sale was handled by volunteer chairman Becky Wilson and co-chair Barbara Hughes with Gail Gaienne as committee. Sales chairman for this year was Polly Davis. Arrangements & Stock were handled by Nancy Murrill with co-chair Sharon Field and committee Bonnie Chapman. Book Barn chairman was Cherry Owen with Eileen Kean as co-chair. The year-round job of book collection chair was performed by Elaine Ellis with committee member Louise Johnson. Publicity chairman was Beth Reames assisted by Leslie Carse with Mitzi Bray for campus publicity. Scrapbook chair was Leslie Carse. Ruth Wilkinson was information chair. Cecilia Baudin served as hospitality chair with co-chair Caroline Daigle. The "Saturday Bag Ladies" were Kay Harrison and Helen Hair. Caroline Wire is the LSU Library liaison for the Book Barn/Bazaar. The 1992/93 president of the Friends of the LSU Library is Julie Hamilton.

**Congratulations again and thanks to all volunteers for the splendid effort which resulted in a record setting total for 1992!**

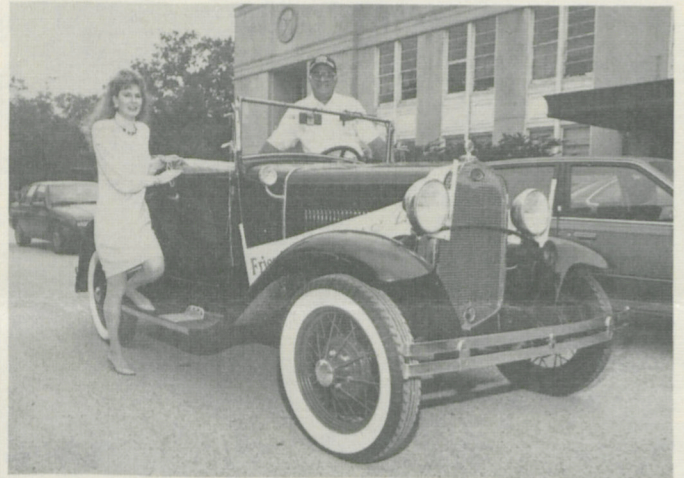


LSU Chancellor Bud Davis cuts the ribbon as Book Bazaar chair Kathleen Roberts, Dean of LSU Libraries Jennifer Cargill, campus publicity chair Mitzi Bray, LSU Agriculture Chancellor Rouse Caffey, and "Mike the Tiger" look on.

VIP identification balloons float above three key workers, Cherry Owen, Nancy Murrill, and bazaar chair, Kathleen Roberts.



Katie Johnson displays two of the framed artworks available for sale.



Agriculture Extension specialist, Beth Reames, who was publicity chair for the book sale, enjoyed riding in the car parade with driver Vincent Tortorich.

"Mike the Tiger" was one of the riders in the parade of antique cars festooned with banners which displayed the days and times of the sale.



Photographs by Don Morrison

# LUMIÈRES

Published by the Friends of the LSU Library  
Edited by Anna Perrault

Volume 17, Number 2

LITERALLY "LIGHTS" IN FRENCH, LUMIÈRES IS FREQUENTLY USED TO DENOTE ENLIGHTENMENT OR KNOWLEDGE. AS SUCH, IT ILLUSTRATES THE PURPOSE OF THE NEWSLETTER: TO ENLIGHTEN MEMBERS OF THE FRIENDS OF THE LSU LIBRARY WITH THE NEWS OF THE ORGANIZATION AND WITH THE NEEDS OF THE LSU LIBRARY. THE COVER DESIGN IS BASED ON AN EXQUISITE HAND-ILLUMINATED BORDER FROM A 15TH CENTURY FRENCH RELIGIOUS MANUSCRIPT.

# Activities Are Plentiful...

## John S. McIlhenny Honored

At the LSU summer commencement exercises John S. McIlhenny, a generous benefactor of the LSU Libraries and other educational and cultural programs of the University for more than 30 years, was honored with an honorary Doctor of Science degree. McIlhenny was cited for his interest in scientific research, especially in the sponsorship of research expeditions to tropical areas in Latin America through which LSU



*From left: Assistant Dean of Libraries, Bob Martin, chats with John McIlhenny during commencement ceremonies where McIlhenny was awarded an honorary degree.*

faculty have discovered new species of birds, mammals, and reptiles, advancing the frontiers of scientific knowledge. McIlhenny has promoted the preservation of wildlife and supported the publication of the results of scientific investigations contributing to the dissemination of new knowledge and our understanding of the natural world. The LSU Libraries have benefited from the establishment of the E.A. McIlhenny Natural History Collection of rare books, scientific journals, and original works of art. Founded in 1971 and named in honor of John S. McIlhenny's uncle, the noted conservationist who established a wildlife preserve on the family holdings at Avery Island and who is credited with saving the snowy egret from extinction, the collection has become recognized around the world as a preeminent resource for research in both the sciences and the humanities.

The Friends of the LSU Library published a catalog of the collection, *Nature Classics* in 1987. The 20th anniversary of the E.A. McIlhenny Collection at LSU was celebrated last fall with a major exhibition and catalog. On November 20, 1992, the LSU Libraries celebrated the addition of the two millionth volume to its collections: a magnificent illustrated fifteenth century book of hours donated by John S. McIlhenny.

The outstanding contributions to the University and the LSU Libraries which John S. McIlhenny has made over the years are of lasting value to the citizens of Louisiana. The

Friends of the LSU Library are proud to claim him as one of our most illustrious members and congratulate him as the recipient of an honorary Doctor of Science degree.

## Exhibitions and Lectures

The Friends of the LSU Library joined with the Friends of the LSU Art Museums to sponsor a reception in Hill Memorial on September 20, 1992 for the opening of an exhibit of art works from the collection of Roger Houston Ogden. An LSU alumnus and member of the LSU Foundation, Ogden has an extensive collection of paintings, sculpture and art objects which reflects the influence of Louisiana and Louisiana artists on the history and culture of the southern United States. Works in the collection range from the early 19th century to 1991 and include such well known artists as Ellsworth and William Woodward, Clarence Millet, Knute Heldner, Caroline Durieux, and Ida Kohlmeyer. Photographers Clarence John Laughlin, Fonville Winans, and C.C. Lockwood are also represented. The exhibition was divided between Hill Memorial Library and the Anglo-American Art Museum. A full-color catalog with an essay about the Ogden collection by H. Parrott Bacot is for sale at the Anglo-American Art Museum on campus.

The 60th Ella V. Aldrich Schwing lecture was given in Hill Memorial Library on October 15, 1992. Titled, "Service Through Technology: Rethinking Today's Library for an Empowered Tomorrow," the lecture was presented by Jane Robbins, director of the School of Library and Information Studies at the University of Wisconsin, Madison. Robbins was dean of the LSU School of Library and Information Science from 1979-81 and a faculty member from 1977-1979. The lecture series is funded by the endowment given to the LSU Libraries by the late former teacher and member of the LSU Board of Supervisors, Mrs. Ella V. Aldrich Schwing. The endowment also supports the publication of the lectures.

## History of Books Class Offered

This spring members of the Friends of the Library will again have the opportunity to learn about the history of books. Assistant dean for special collections, Robert Martin, will offer a series of lectures and demonstrations for Friends members on Tuesday evenings during February and March. The lectures will focus on the development of printing technologies, paper, bindings, and illustration, and will include examination and discussion of examples from the LSU Special Collections. Refreshments will be served following each lecture, providing an opportunity for informal discussion.

*See page 5*

## Activities—From page 4

The classes will meet in Hill Memorial Library at 7 p.m. on February 2, 9, and 16, and on March 2. For more information or to register for the class, call Special Collections at 388-6551.

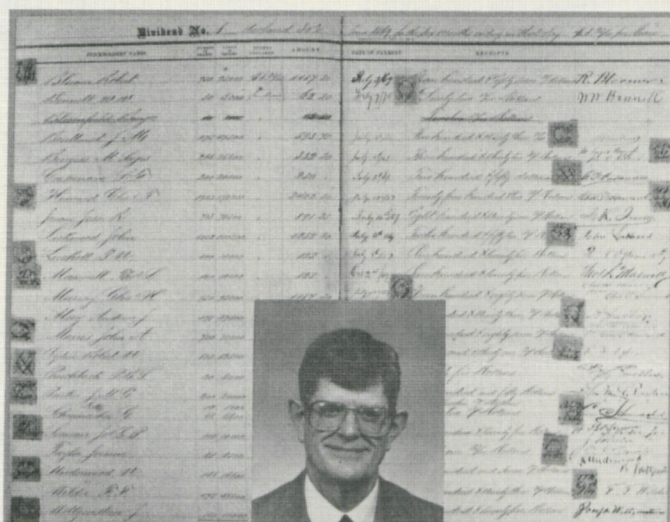
### Call for Volunteers

A record number of books were received this year for the annual Book Bazaar which was held October 8-10. The processing of books for the annual sale goes on year-round and will resume soon for the 1993 sale. Volunteers are needed to work in the book barn in the basement of Middleton Library. The hours of the barn are Monday, 9 a.m.-12 noon; Wednesday, 9 a.m.-3 p.m.; Thursday 9 a.m.-12 noon. Textbooks are sold

during the hours the book barn is staffed. If more workers were available, the hours could be expanded. This is a fun group to join. If you can volunteer a few hours a week, contact Eileen Kean (343-8116) or Cherry Owen (925-8679).

### Goodrich-Taylor Graduate Assistantship

The recipient of the Goodrich-Taylor Graduate Assistantship Award for the 1992/93 academic year is Sigrid King, a doctoral candidate in the LSU Department of English. She will present a report on her project at the annual dinner in the spring. The project is an analysis of the 18th century holdings of the LSU Rare Book Collections to assess the strengths and weaknesses of the collection for both major and minor authors. The holdings are being compared with standard sources and lists of desiderata will be compiled.



M. Stone Miller, Jr.

In November, 1991, M. Stone Miller, Jr., passed away. He is deeply missed by all who knew him. Unfailingly kind and thoughtful of others, he was also astonishingly knowledgeable about the history of Louisiana. His contribution to the LSU Libraries, in over 20 fruitful years of service, cannot be measured. Scholars will be using the manuscript materials he acquired for centuries to come. To honor him and continue the work he began, the LSU Libraries have established the M. Stone Miller, Jr., Memorial Fund, which will be dedicated to the acquisition of materials for the Louisiana and Lower Mississippi Valley Collections.

In the summer of 1989, Stone Miller curated a fascinating and timely exhibition on the Louisiana Lottery that was displayed in Hill Memorial Library. As a result of that exhibition, two volumes of records from the Louisiana Lottery Company were offered to the LSU Libraries. A page from these records forms a background tribute to M. Stone Miller, Jr.

## MEMORIALS

### In Memory of:

Barry Dickhute  
from Mr. and Mrs. William J. Berchey, Jr.

R. Gordon Kean, Jr.  
from Dr. and Mrs. Paul Murrill  
Anna and Joe Perrault

M. Stone Miller, Jr.  
from Miss Luella V. Snyder

George Munroe Robinson  
from Mr. and Mrs. Harold C. Hall

Mrs. Maryanna Stanford  
from Dr. and Mrs. Paul Murrill

Mrs. Vivian Stenzel  
from Henley, Kathey, and Anne Hunter

Mrs. Ellen Albright Taylor  
from Mrs. Agnes Taylor

Dr. John A. Thompson  
from Dr. Cecil G. Taylor

## Officers

Julie Hamilton, President  
Virginia Grenier, Vice-President  
Nancy Murril, Secretary  
Becky Cutshaw, Treasurer

## ◆ Classes of Membership ◆

- ☐ A. Student Member (annually) .....\$ 2.00
- ☐ B. Regular Member (annually) .....\$10.00
- ☐ C. Contributing Member (annually) .....\$25.00
- ☐ D. Sustaining Member  
(checkout privileges) .....\$50.00
- ☐ E. Individual or Corporate Patron Member  
(annually) .....\$100.00
- ☐ F. Patron Member (annually) .....\$500.00
- ☐ G. Life Member .....\$1,000.00
- ☐ Check payable to LSU Foundation for Friends of the Library
- ☐ I prefer to pay as follows: .....
- Member's signature .....
- Address .....
- City/State/Zip .....
- Date .....



*Jennifer Cargill, dean of LSU Libraries, accepts a check for \$60,000—profit from the Book Bazaar—from Kathleen Roberts, chair of the 1992 Book Bazaar, while Friends president, Julie Hamilton, looks on.*

*Thanks for your support!*

LSU Is An Equal Opportunity University • LSUPR • 8C • 1192



LOUISIANA STATE UNIVERSITY

LSU Foundation  
Baton Rouge, Louisiana 70803

Non-Profit Org.  
U.S. Postage  
PAID  
Permit No. 909  
Baton Rouge, LA