

1959

The Annual Ring 1959

Louisiana State University and Agricultural & Mechanical College

Follow this and additional works at: http://digitalcommons.lsu.edu/agrn_r_yearbook

Recommended Citation

Louisiana State University and Agricultural & Mechanical College, "The Annual Ring 1959" (1959). *Annual Ring*. 3.
http://digitalcommons.lsu.edu/agrn_r_yearbook/3

This Book is brought to you for free and open access by the School of Renewable Natural Resources at LSU Digital Commons. It has been accepted for inclusion in Annual Ring by an authorized administrator of LSU Digital Commons. For more information, please contact gcoste1@lsu.edu.



Annual Ring '59

Vol. 20

THE 1959 ANNUAL RING

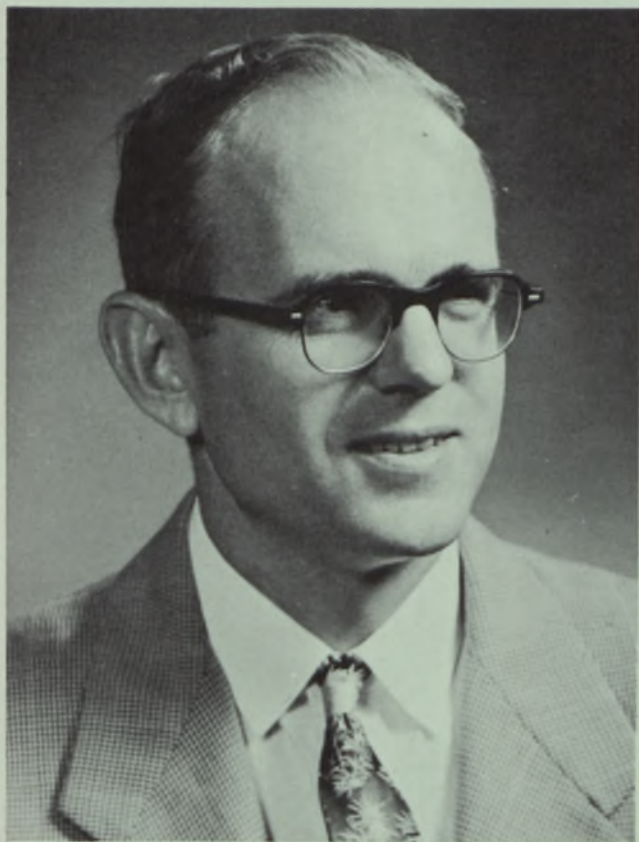
SCHOOL OF FORESTRY

**LOUISIANA STATE
UNIVERSITY**

Photo — Ben Leeper



DEDICATION



The twentieth edition of the ANNUAL RING is dedicated to Professors Martin B Applequist and Charles B. Briscoe.

Because of their dedication to the forestry profession, research abilities, and willingness to assist the students in any worthwhile cause, they have contributed much to the betterment of the School of Forestry.

The loss of their services will be felt deeply by the School. But our regret at their leaving is tempered by the knowledge that they can render even greater services to forestry in their newly chosen work. In their new undertaking we wish them every success.

FOREWORD

This year the staff has worked toward producing an entirely new style of ANNUAL RING. We felt that a top-notch school such as our School of Forestry deserved a yearbook of similar quality. Since this is the twentieth edition of our yearbook, our goal has been to produce a larger and better book in order to keep in stride with the progress being made in our school.

There seem to be just two important things to bring out. First, to thank everyone for their help and cooperation, especially the advertisers, without whom this publication would not have been possible. Second, to say that the purpose of this year's ANNUAL RING is to provide a permanent record of past experiences and fellowships with less emphasis on educational topics that can be found in textbooks and other technical writings.

On behalf of the entire staff, we sincerely hope that everyone will find something of interest or maybe even of some importance within the pages of the 1959 ANNUAL RING.



THE STAFF



	Editor	Leroy Williamson	
Business Manager	John Squires	Alumni Editor	James Loh
Faculty Advisor	Dr. Leslie Glasgow	Photographer	Ward Cro
Circulation Editor	Kenneth Allen	Contributors	Cesar Portocarr
			James Loh
			Bill Ech
			Robert Rum
			Stan Bar
			Tom Der



THE DIRECTORS

MESSAGE

DR. PAUL Y. BURNS

Director of the School of Forestry
B.F., Tulsa 1941
F., Yale 1946
D., Yale 1949



The value of a man's university degree largely depends on the current standing of his alma mater. Thus each L.S.U. forestry alumnus is vitally concerned with the present condition and relative rating of the School, whether he finished in 1926 or in 1956. "How are things down at the Ol' War Skule?" is a query I frequently hear from alumni in my travels.

This past year L.S.U. was Number One in the nation in football. This was fine; we were all thrilled by our team's undefeated and untied record for 1958. But how do we stack up academically? The School's main job is to turn out competent foresters. How are we doing it?

I believe the answer is yes, and that our School of Forestry is academically tops. Where is the proof? It may be that the proof lies in the past and potential accomplishments of our alumni, but this cannot be counted or measured with precision.

Another test of the School's academic rating is available, however. A printed statement was recently released by the Council of the Society of American Foresters, titled "Bases for Accrediting Schools of Forestry." In 1958 the forestry faculty used this grading system to evaluate the School. The grading system takes into account such factors as the institutional status of forestry; the size, duties, and qualifications of the forestry faculty; supporting departments; financial support for forestry; building, library, and laboratory facilities; field instruction; and history of the school.

The analysis showed that the L.S.U. School of Forestry rated particularly high in (1) low number of student credit hours per semester, (2) teaching experience of the faculty, (3) strong supporting departments, (4) building facilities on campus, (5) field laboratories, and (6) history of the school. We found that we were not outstandingly weak in any of the features in the grading system. This is not to say that the School cannot be improved, because we do have some room for improvement. And we are making a continual effort to further strengthen the School.

The 1958 self-evaluation, however, was encouraging to me as Director and to the forestry professors. I feel that our alumni and our students want to share in this encouraging sign of progress at the L.S.U. School of Forestry.

Paul Y. Burns

AWARDS AND SCHOLARSHIPS . . .



RODNEY FOIL
Gaylord Container Corp.



LOUIE P. HEARD
Outstanding Sophomore
1958



JAMES LEGG
Seedling and Sapling

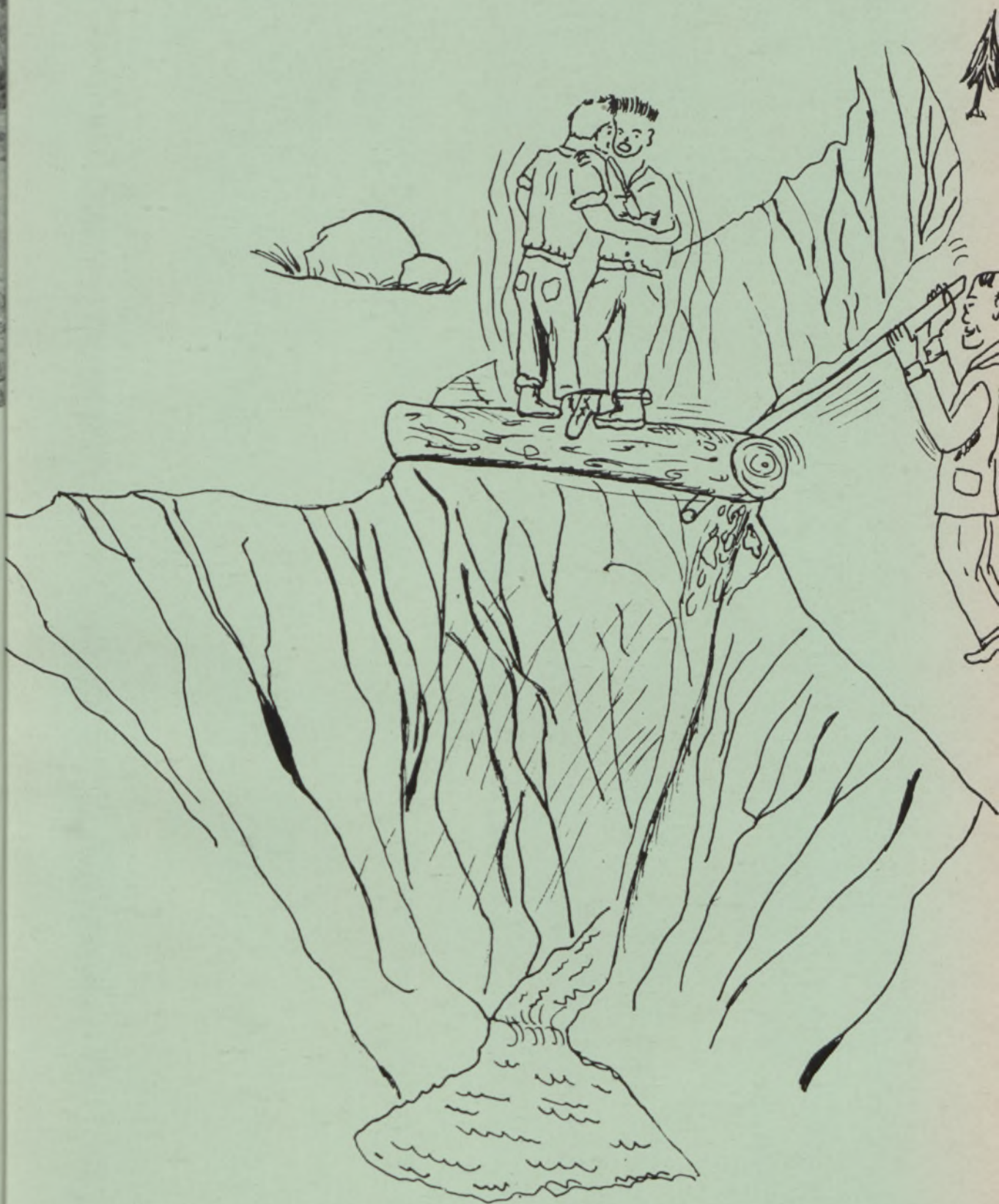


JAMES LOTAN
Homelite



ROBERT RUMSEY
Calcasieu Paper Company

FACULTY



FACULTY . . .



MARTIN B. APPLEQUIST

Assistant Professor

B.S.F., Iowa State 1940

M.F., Duke 1941

D.F., Duke 1958

Dendrology; Artificial Reforestation;

Bottomland Hardwood Forestry



BRYANT A. BATEMAN

Professor

B.S.F., L.S.U. 1926

M.S., Iowa State 1934

Ph.D., Michigan 1949

Farm Forestry; Game Management



CHARLES B. BRISCOE

Assistant Professor

B.S.F., L.S.U. 1950

M.F., L.S.U. 1954

D.F., Duke 1957

Silvics; Mensuration

FACULTY . . .



A. BIGLER CROW

Associate Professor

B.S.F., North Carolina State, 1934

M.F., Yale, 1941

Silviculture; Forest Fire Management



R. RODNEY FOIL

Instructor

B.S.F., L.S.U. 1956

Dendrology; Artificial Reforestation



LESLIE L. GLASGOW

Assistant Professor

B.S.F., Purdue, 1942

M.S., Maine, 1948

Ph.D., Texas A. & M., 1958

Game Techniques; Waterfowl Management

Fur Animal Management; Forest Game

FACULTY . . .

RALPH W. HAYES

Professor

B.S.F., Iowa State, 1914

M.F., Iowa State, 1924

Forest Economics; Forest Finance



WILLIAM C. HOPKINS

Associate Professor

B.A., University of Cincinnati 1939

M.F., Yale 1941

D.F., Yale 1957

Wood Technology; Wood Preservation;
Timber Physics; Seasoning



ROBERT W. McDERMID

Associate Professor

B.S.F., Davidson 1930

M.F., Yale 1937

Logging; Milling; Forest Management;
Forest Products



FACULTY . . .



WARREN S. THOMPSON

Assistant Professor

B.S., Alabama Polytechnic 1951

M.F., Alabama Polytechnic 1955

Ph.D., North Carolina State 1959

Wood Technology Lab; Research;

Graduate Student Counselling



MACIEJ SLAWOMIR CZARNOWSKI

Instructor in Forestry (Research)

M.F., Lwow Polytechnic 1935

D.F., University of Poznan' 1946

Forest Ecology



MRS. CHERRY BURNHAM
Secretary



MISS KIT SEAL
Secretary



MRS. MARGIE STERN
Secretary

RANDOM SHOTS . . .



1. O.K., students, watch this one!
2. You men can pose for pictures, but I'm going fishing.
3. Doing a little research.
4. Gee, they're really growing!
5. It's all in knowing how.
6. A man who is friendly to everyone.



CLASSES



GRADUATE STUDENTS . . .



DAVID BRANTON

ROBERT BRITT



BENTON BOX

JIM CURLIN



FRANK DALHOFF



A. P. DuBARRY



FELIX FAVALORO

GRADUATE STUDENTS . . .



RODNEY FOIL

BOBBY HARMON



NORWIN LINNARTZ

RAYMOND PALERMO



LAWRENCE SOILEAU



WILLARD WILLIAMS



JIM ZEAGLER

SENIORS . .



SHELBY G. ALFORD
Kentwood, Louisiana
LSU Society of Foresters; Society of
American Foresters; Major - Production

KENNETH J. ALLEN
Baton Rouge, Louisiana
LSU Society of Foresters; Society of
American Foresters; Annual Ring
Vets Club; Ag Fair; Major - Production



JAUN BAKER
New Orleans, Louisiana
LSU Society of Foresters; Major - Production.

STANLEY J. BARRAS
New Orleans, Louisiana
LSU Society of Foresters; Society of
American Foresters; Conclave Public
Committee; Wildlife Society; New
Club; Conclave Team Member 1958
Major-Forest and Game Management



FRANKLIN T. BOLTON
Little Rock, Arkansas
LSU Society of Foresters; Society of
American Foresters; Alpha Zeta; Con-
clave Committee; Free and Accepted
Masons; Order of Eastern Star; Major
Game Management.

R. SIDNEY BOONE
Paris, Tennessee
LSU Society of Foresters; Society of
American Foresters; Alpha Zeta; Phi
Sigma Pi; LSU Band; Phi Mu Alpha
Major-Utilization.



GEORGE R. BOUCHARD
Houston, Texas
LSU Society of Foresters; Alpha Zeta
Major-Utilization.

LYLE V. BURNS
Baton Rouge, Louisiana
LSU Society of Foresters; Society of
American Foresters; Conclave Team
Member 1958; Major - Production

SENIORS . . .



WALTER E. CARL, JR.
New Orleans, Louisiana
LSU Society of Foresters; Major-Production.



CHARLES W. CAILLOUET
Baker, Louisiana
LSU Society of Foresters, Secretary
1959; Society of American Foresters;
Xi Sigma Pi; Alpha Zeta; Conclave
Publicity Chairman; Major-Game Man-
agement.



JAMES WARD CROWE
Bogalusa, Louisiana
LSU Society of Foresters; Society of
American Foresters; Xi Sigma Pi; Annual
Ring Staff, Photographer; Major-Prod-
uction.



TOMMY R. DELL
New Orleans, Louisiana
LSU Society of Foresters, Vice-Presi-
dent, President; Agriculture Sophomore
Class President; Ag Council; Student
Senate; Ag Fair; Alpha Zeta; Honor
Council; Xi Sigma Pi; Chairman, Sec-
ond Annual Conclave; Captain, Co.
B1., Army ROTC; Society of American
Foresters; Major-Utilization.



MILTON J. EVANS
New Orleans, Louisiana
LSU Society of Foresters; Society of
American Foresters; S.A.M.E.; Major-
Production.



JOHN R. FOLSOM
Jasper, Texas
LSU Society of Foresters; Society of
American Foresters; Alpha Zeta; Xi
Sigma Pi; Major-Production.



ROBERT A. GERMANY
New Orleans, Louisiana
LSU Society of Foresters; Society of
American Foresters; Conclave Committee;
Major-Utilization.



PAUL J. HARPER
Pearl River, Louisiana
LSU Society of Foresters; Major-Prod-
uction.

SENIORS . .



EARL E. KEATON
Hammond, Louisiana
LSU Society of Foresters; Society of American Foresters; Major-Production



WENDELL A. KENNEDY
Mize, Mississippi
LSU Society of Foresters; Society of American Foresters; Alpha Zeta; Sigma Pi; Major-Production.



JAMES ANDY KROMER
Houston, Texas
LSU Society of Foresters; Society of American Foresters; Alpha Zeta; Major-Production.



HAROLD LaHAYE
Port Barre, Louisiana
LSU Society of Foresters; Treasurer, Society of American Foresters; Conclave Team Member, 1958; Major-Production.



MICHAEL J. LAWTON, JR.
New Orleans, Louisiana
LSU Society of Foresters; Society of American Foresters; S.A.M.E.; Major-Production



JAMES E. LEGG
Moss, Mississippi
LSU Society of Foresters; Society of American Foresters; Xi Sigma Pi; Forester; Alpha Zeta; Conclave Committee; Major-Production.



JAMES E. LOTAN
Pontiac, Michigan
LSU Society of Foresters; Society of American Foresters; Alpha Zeta; Sigma Pi, Secretary-Fiscal Agent; Phi Kappa Phi; Alumni Editor, ARS Ring; Conclave Chairman, Prize Committee; Forest Products Research; Outstanding Sophomore Award; 1958 Homelite Scholarship; Major-Production.



JOHN E. LOWE
Briggsville, Arkansas
LSU Society of Foresters; Conclave Member 1958; Major-Production.

SENIORS . . .



JAMES B. MATTISON
Bastrop, Louisiana
LSU Society of Foresters; Society of
American Foresters; Major-Production.



C.P. McCALLUM, JR.
Prairieville, Louisiana
LSU Society of Foresters; Major-Utili-
zation.



LIONEL J. MELANCON, JR.
New Iberia, Louisiana
LSU Society of Foresters; Society of
American Foresters; V.F.W. Post
1982; Major-Production.



WILLIAM F. MIRANDA
Baton Rouge, Louisiana
LSU Society of Foresters; Society of
American Foresters; Advanced ROTC;
Major-Production.



MILTON ROBINSON
Dallas, Texas
LSU Society of Foresters; Society of
American Foresters; Major-Production.



JOHN L. SCHULTE
New Orleans, Louisiana
LSU Society of Foresters; Society of
American Foresters; Veterans Club;
Newman Club; Major-Utilization.



JOHN W. SQUIRES, JR.
Jackson, Mississippi
LSU Society of Foresters; Society of
American Foresters; Business Manager,
Annual Ring; Kappa Alpha; Ag. Fair;
Conclave Committee Chairman; Con-
clave Team Member 1958; Major-Pro-
duction.



EDWARD R. VALES
Mexico City, Mexico
LSU Society of Foresters; Society of
American Foresters; Alpha Zeta; Xi
Sigma Pi, Associate Forester; Tau
Kappa Epsilon; Conclave Team Mem-
ber 1958; Conclave Committee; Major-
Production.

SENIORS . . U



SALVO J. VERUCCHI
 Natchez, Mississippi
 LSU Society of Foresters; Society of
 American Foresters; American Fore-
 Association; Alpha Zeta; Major-Production.

BURTON DEWEY WEAVER, JR.
 Flora, Louisiana
 Major - Production.



LLOYD W. WHATLEY
 Chaneyville, Louisiana
 LSU Society of Foresters; Society of
 American Foresters; Captain, AF
 Major-Forest and Game Management

DARRELL L. WILLIAMSON
 Levelland, Texas
 LSU Society of Foresters; Society of
 American Foresters; Xi Sigma Pi,
 ger; Alpha Zeta; Editor, Annual R
 Major-Production.



JEWEL L. WILLIS
 Port Allen, Louisiana
 LSU Society of Foresters; Wildlife
 Society; Major-Game Management

JUNIORS . . .



JULIAN BANKSTON

DAVID BORDELON



THOMAS CALLAHAN

WILLIAM CONLY



PATRICK EBARB



HAMP ECHOLS



JAMES FELPS

JUNIORS . . .



BYRON FONTENOT

NICHOLAS FRAZIER



ELDRED GRIFFIN

JACK GRISWOLD



LOUIE P. HEARD



ERNEST JEMISON



GEORGE JOHNSON

JUNIORS



HOWARD JONES

MICHAEL JUNG



GLEN KILE

LEONARD KINSLEY



ONNIE MILEY



DONALD MONK



CESAR PORTOCARRERO

JUNIORS . . .



BILLY RESTER

WILMER ROGERS



ROBERT RUMSEY

JEROME SHIREMAN



ARNOLD SMITH



CLIFTON WHITEHEAD



SIDNEY WINTERS

SOPHOMORES . . .

IMPSON, JOHN

JONES, BARRY

KENNEDY, KENNETH

McCORMICK, JACK

NAFF, NATHANIEL

PENNY, JOHN

WHITEHEAD, GERALD

WILLIS, JOHNNY

FRESHMEN . . .

BENNETT, RICHARD

CUNNINGHAM, MANUEL

DUFF, JAMES

EARNEST, WILLIAM

GRISWOLD, JAMES

GULLO, FRANK

IKERD, GAY

JACKSON, JOHN

JENKINS, TILLMAN

JURGENS, JOHN

KELLY, JOHN

KENDRICK, JAMES

MARLER, WAVER

MEREDITH, JULE

MILLER, FRED

MILLET, LEON

MOORE, ROBERT

PHILLIPS, JAMES

SAVOY, CLYDE

SISK, JERRY

SOUTHERNLAND, WALTER

STEVENS, JERRY

TOLER, JIMMIE

WILLS, DOUGLAS

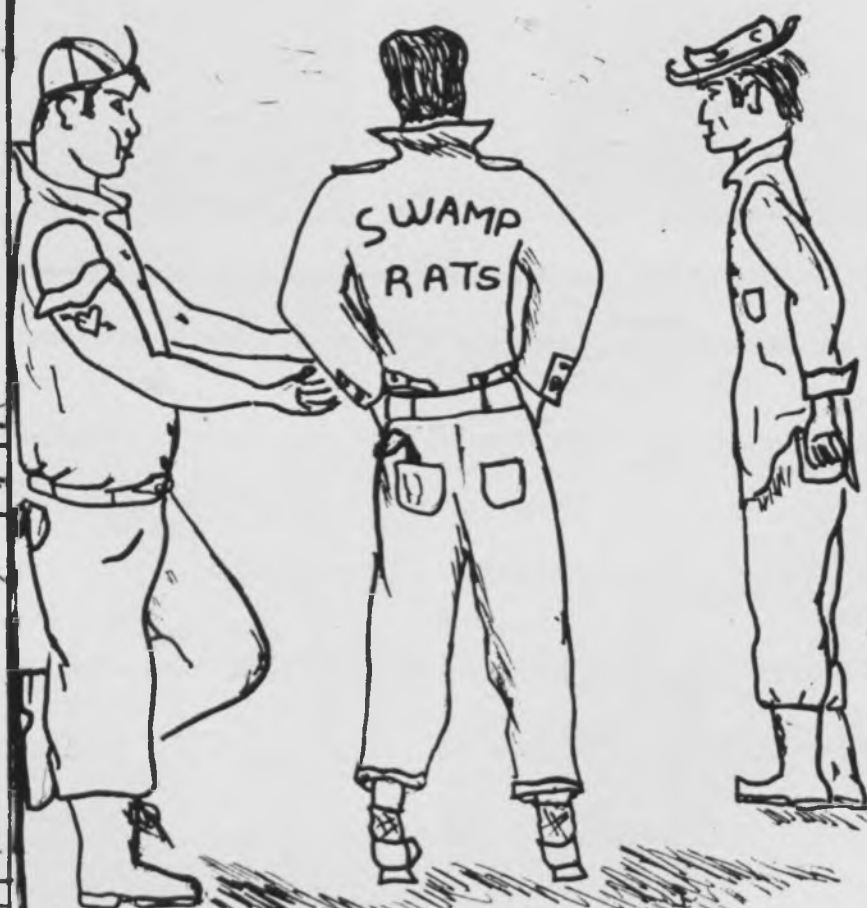
WATSON, WILLIAM



SNAPSHOTS . . .



ORGANIZATIONS . . .



L.S.U. SOCIETY OF FORESTERS . . .

OFFICERS

President	Tom Dell
Vice-President	Pete Heard
Treasurer	Harold LaHaye
Secretary	Charles Caillouet
Athletic Director	John Lowe
Sergeant at arms	Freddy Monroe
Publicity Agent	John Squires

The L.S.U. Society of Foresters as an organization is dedicated to the promotion of friendship and the development of interest in the profession of forestry.

Regular meetings are held twice monthly with some form of entertainment normally being provided. The society has been very active this year in boosting the guest speaker program with speakers from nationwide, as well as local sources.

Also sponsored by the society are the ANNUAL RING, Field Day, Freshman Orientation, and the Second Annual Conclave.

This has been one of the society's most active and profitable years, may it continue to improve each year.

XI SIGMA PI



OFFICERS

Forester Jim Legg
Associate Forester Edward Vales

Secretary James Lotan
Ranger Leroy Williamson



A black and white photograph of a group of thirteen young women, likely members of a school organization, posing in two rows. The women are dressed in mid-20th-century attire, including dresses, sweaters, and overalls. They are smiling and looking towards the camera. The background is a simple, light-colored wall.

Vice-President	(1st Semester) Peg Allen (2nd Semester) Sue Williamson
Secretary-Treasurer	(1st Semester) Dotty Dell (2nd Semester) Nan Heard
Membership	(1st Semester) Betty Dalhoff (2nd Semester) Nancy Goldman
Publicity	Audrey Legg

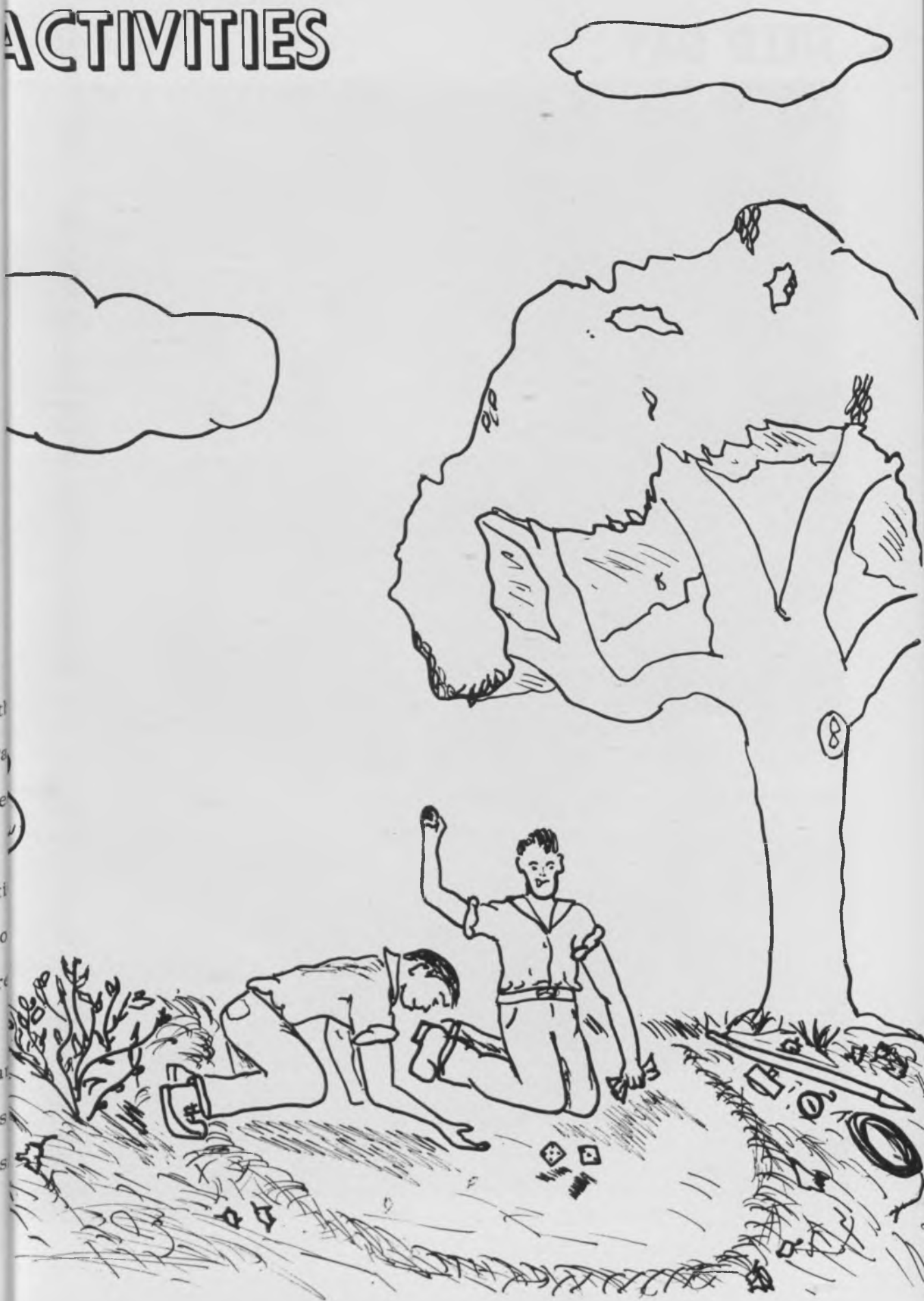
Mrs. Paul Burns and Mrs. William Hopkins are co-sponsors of the organization.

Highlighting the social activities of the year are an annual Christmas Party and Spring Picnic for the Pinettes, their husbands and faculty members. This year's Christmas Party was a Progressive Dinner held at the homes of faculty members Burns, McDermid and Hopkins.

1958-59, another successful year for the Pinettes!

ACTIVITIES

en
on
ll
rd
ff
an
gg
g th
Pa
ive
ati
s to
ore
y at
r's
ers



FIELD DAY



FIELD DAY . . .



SUMMER CAMP . . .



1. It all began here. 2. Stalag 17. 3. Now what do I do? 4. Just thinking it over. 5. Coming home from last night's poker game. 6. A snake's best friend. 7. Mr. Applequist takes his yearly swim.

SUMMER CAMP . . .



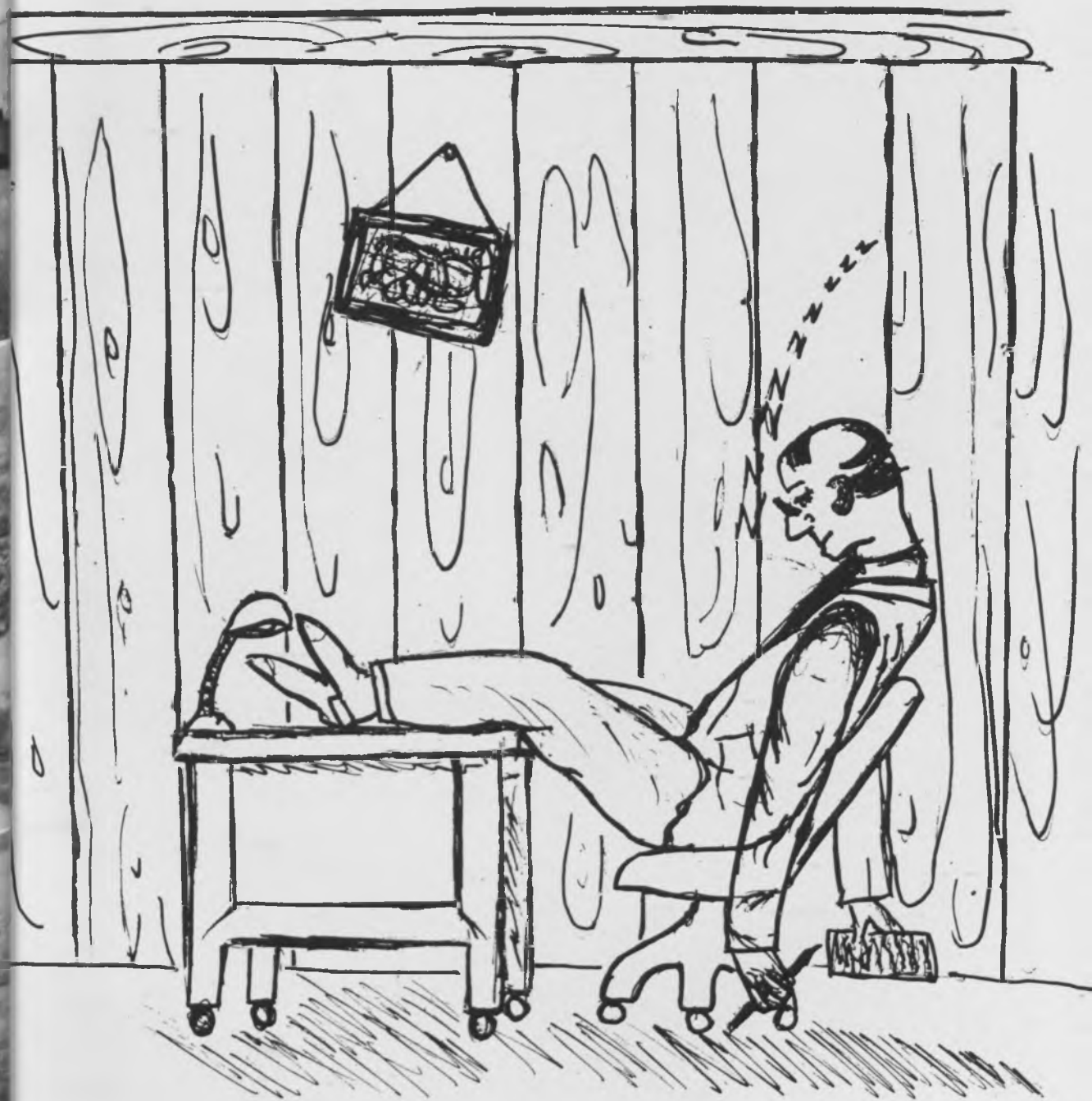
Summer Camp House Mother. 2. Let ME show you how it's done. 3. It walks; it talks; it breathes!! 4. The catch, boys. 5. The reforestry boys. 6. Next week we'll organize. 7. Wha' happen?

SUMMER CAMP . . .



1. Now where can he be? 2. Looking at the farmer's daughter. 3. Take me to your leader. 4. A scenic cruise. 5. A road crew? 6. Aw, what's the use? 7. You show'em, John Jr.

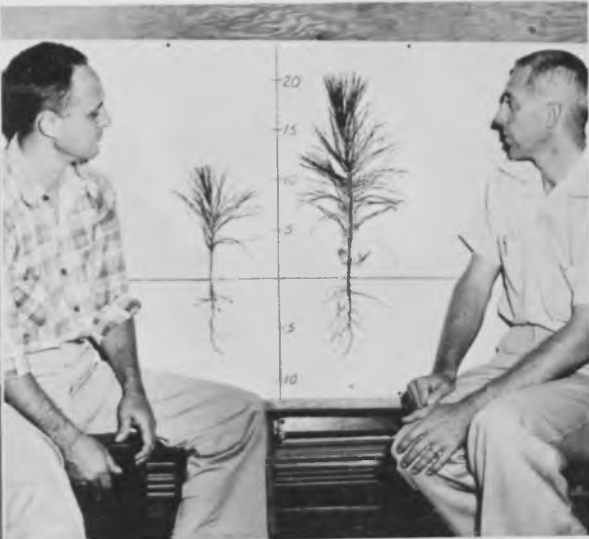
ALUMNI



ALUMNI AND HOMECOMING . . .



LUMNI . . .



ALUMNI . . .



SECOND ANNUAL CONCLAVE . . .



MISCELLANEOUS . . .



EN
h. I
45
ch

RO
pe
VE
ox
ELI
eS

INE
ng
a. 7
DT
ORY
Voo
ASH
Sout
STE
on
LVE
J.S
ESS
Kinc
AVE
Nore
CKE
ion
360
chil
CKE
W as
AVE
Sici
AM
Clai
CKE
Oper
ORG.
Smi
CH,
IITH
Co.

LUMNI DIRECTORY . . .

Class of 1926 (1)

HEMAN, BRYANT A. - M.F., Iowa State 1934; Ph.D., Michigan, 1949; Professor of Forestry LSU; 45 Leeward Drive, Baton Rouge, La.; Married, 1 child.

Class of 1927 (3)

ORGAN, SAM H. - President, First National Bank, Opelika, Ala.

WENS, NORMAN G. - Agent, Standard Oil Co., Box 169, Picayune, Miss.; Married, 2 children.

ELIS, WILLIS B. - M.F., Yale, Retired; 4210 LeSaird Road, Monroe, La.

Class of 1928 (3)

NETT, FRANK W. - M.F., Yale, 1931; Consulting Forester; 4767 Convention St., Baton Rouge, La.; Married, 3 children.

OTH, E. W. - Address unknown.

ORY, DAVE H., JR. - Alexander State Forest, Woodworth, La.

Class of 1929 (3)

SHEARS, MURRAY E. - Consulting Forester; 310 South Holly St., Hammond, La.

TER, FALCON R. - Chief Forester, Olin Mathieson Chemical Corp., P. O. Box 488, Monroe, La.

VESTER, E. J. - Assistant Ranger, Biloxi District, U.S. Forest Service; Gulfport, Miss.

Class of 1930 (5)

ESSON, MAXWELL - Forester, Quatre Parish Co., Kinder, La.; Married, 4 children.

AVES, BEN S. - Technologist, Shell Oil Co., Norco, La.

KEAN, A. S. - M.F., LSU, 1941; Chief Extension Forester, Agricultural Extension Building, LSU; 60 Stanford Ave., Baton Rouge, La.; Married, 2 children.

KELLAR, ALFRED D. - Department of Commerce, Washington, D. C., 214 S. Maple St., Fairfax, Va.

AYER, CLAUDE L. - Farmer; General Delivery, Cicely Island, La.

Class of 1931 (9)

AMS, WILLIAM P. - Manager, Baton Rouge Claims Co., 1349 Main St., Baton Rouge, La.

KEITHEN, TOGO V. - M.F., Yale, 1932; Mill Operator, Summerfield, La.

ORGAN, ROY B. - Forestry Consultant, W. T. Smith Lumber Co., Chapman, Ala.

CH, LUCIUS, JR. - Deceased.

TH, FRANCIS A. - Manager, Arkansas Fuel Oil Co., New Roads, La.

ST. DIZIER, A. J. - Principal, Lake Charles High School, 154 Moss Street, Lake Charles, La.

STRINGFIELD, WILL - In Regular Army; 1306 Lorraine St., Austin, Texas.

TATE, THEODORE, JR. - Eunice, La.

TOLER, JAMES B. - Deceased.

Class of 1932 (10)

BABIN, WILLIE JAMES - Vice-President, Modern Tire Service, 5256 Bradley St., Baton Rouge, La.

DARWIN, WILLIAM N. - Owner, Darwin Lumber Coal Co.; Box 166, Norris, Tenn.

FORTENBERRY, E. J. - Forest Supervisor, Medicine Bow National Forest, Laramie, Wyo.

HOBGOOD, E. C. - General Delivery, Clinton, La.

JOHNSON, M. M. - Work Unit Conservationist, Soil Conservation Service; 1404 Aspen St., Henderson, Texas.

MCCULLOUGH, JOE T. - Forester, Ocala Manufacturing Co.; 923 E. Palm Street, Ocala, Florida; Married, 2 children.

MAY, JACK T. - M.S.F., Georgia, 1937; Ph. D., Mich. State, 1957; Professor of Silviculture, University of Ga., Athens, Georgia; Married, 8 children.

MILES, R. V., JR. - Manager, Division of Forestry, Gulf States Paper Corp., 1025 Myrtlewood Dr., Tuscaloosa, Ala; Married, 2 children.

SQUIRES, JOHN W. - Chief Forester, Mississippi Products, Inc., 604 Webster St., Jackson, Miss.; Married, 5 children.

TANNEHILL, GEORGE, JR. - District Ranger, U.S. Forest Service, Winnfield, La.

Class of 1933 (2)

MATTHEWS, W. P. - Reservoir Manager, U.S. Corps of Engineers, Nashville District Federal Building, Nashville, Tenn.

SMITH, H. E. - County Surveyor, Wilkinson County, Crosby, Miss.

Class of 1934 (6)

HEBERT, CLYDE H. - International Paper Co., P. O. Box 889, Beeville, Texas.

KILGORE, ELBERT - Superintendent of Lands, Alabama By-Products Corp., Box 354, Birmingham, Ala.

LEHMAN, JOHN W. - Chief Forester, Utilization Section, Division of Forestry Relations, TVA; Box 88, Norris, Tenn.; Married, 2 children.

SENTELL, N. WESLEY - Procurement & Development Forester, Continental Can Co., Inc., Box 60, Hodge, La.; Married, 4 children.

SESSIONS, LEE C. - District Forester, Louisiana Forestry Comm., Box 689, Hammond, La.; Married, 3 children.

YAWN, F. W. - Regional Forester, Arkansas Forestry Comm., Box 5900, Camden, Ark.

Class of 1935 (5)

ETZEL, ROBERT A. - Boy Scouts Executive; 139 Melton St., Longview, Texas.

KORTE, KARL H. - Associate Forester, Board of Commissioners of Agriculture and Forestry, Kahului, Maui, Territory of Hawaii.

MacCLENDON, TRAVIS - Woodlands Manager, Forest Products Division of Olin Mathieson Chemical Corp.; 1606 Emerson St., Monroe, La.; Married. 2 children.

OLSON, HAROLD W. - 17 Merrow Road, Lynnfield Center, Mass.

TOWNSEND, HAL E., JR. - M.F., LSU, 1949; Associate Professor of Forestry and Director of Men's Housing, Northwestern State College, Box 985, Natchitoches, La.

Class of 1936 (3)

BLAKE, DUNCAN C. - M.F., LSU, 1949; Division Industrial Engineer, Union Bag-Camp Paper Corp., Savannah, Georgia.

MIXON, JAMES E. - State Forester, Louisiana Forestry Comm., P. O. Box 1269, Baton Rouge, La.; Married, 2 children.

WIEMAN, R. L. - Address Unknown.

Class of 1937 (23)

BOLAR, MAX D. - Area Forester, Soil Conservation Service, Hope, Ark.

CAMP, J. W. - Box 214, Bradley, Ark.

CHALK, A. T. - District Conservationist, Soil Conservation Service; Rt. No. 1, Box 11, Mt. Pleasant, Texas.

COBB, H. C. - Self-employed; 1826 Dartmouth St., Alexandria, La.; Married, 8 children.

DELISA, L. - Assistant Laboratorian in Bacteriology, Bath, N. Y.

DIETRICH, WARREN E. - Forester and Agent, The Pardee Co., No. 1 Bay Creek Road, Box 269, Minden, La.

GARR, FRED - In Service.

HUNT, THOMAS W. - In Service.

HERROD, JASPER B. - President, Central Creosoting Co., Inc.; Slaughter, La.

KITCHENS, J. H., JR. - Executive Director, Louisiana Forestry Association, 3455 Wainwright St., Box 789, Alexandria, La.; Married, 2 sons.

MINOR, HARMON E. - 1408 Missouri Ave., Houston, Texas.

MONTFORT, W. W. - Ass't. Extension Forester, Mississippi Extension Service, State College, Miss.

PALMER, WILLIAM M. - M.F., Mich., 1938; Assistant State Forester, Louisiana Forestry Commission; P. O. Box 1269, Baton Rouge, La.

PERKINS, C. J. - M.S. LSU, 1952; Wildlife Bio La. Wild Life & Fisheries Comm.; 324 Blackw Oakdale, La.

PIERSON, WOODROW D. - Rt. No. 4, Longview Texas.

RHODES, ROBERT R. - M.S., Texas A. & M., 19 Assoc. Professor, Forestry Dept., Texas A & M College; 413 Walton Drive E., College Station Texas; Married.

ROBERTS, CHRISTY E. - Division Sup't., Woodcurement Division; International Paper Co., B La.

RORDAM, R. B. - Private Surveyor; 318 Caronde St., New Orleans, La.

RUSSELL, E. J. - Associate Prof. of Forestry, Dept. of Forestry, Louisiana Tech.; 901 Robert St., Baton, La.

SENTELL, JOHN - Farmer; 238 Albert Street, Shport, La.

SMITH, MARSHALL R. - Dist. Supt.; International Paper Co.; Box 657, Olla, La.

TURBA, HOHN- 1223 Hodgson Street, Schenect New York.

VALENTINE, W. C. - Chief of Fire Control, La Forestry Comm., Box 1269, Baton Rouge, La.

WOODCOCK, FRED C. - Forester; Olin Mathieson Chemical Corp.; West Monroe, La.; Married, 10

Class of 1938 (22)

BANGO, HENRY L. - Consulting Forester, P. O. Box 4072, Shreveport, La.

BREWER, W. L. - Supt. Land Acquisition; Riegel Woodlands Corp.; Box 65, Bolton, North Carol

BRYAN, JAMES E., JR. - Second Vice-President L. N. Dantzler Lumber Co., Perkinston, Miss Married, 2 children.

BYRD, EDWIN L., JR. - 1310 Munday Ave., El Paso, Texas.

COUCH, CLIFTON Z., JR. - Deceased.

DEFELICE, DAVE J. - Teacher; Raceland, La.

FERGUSON, EDWIN R. - M.F., Duke, 1951; Research Forester; E. Texas Branch, Southern Forest Experiment Station, 1515 Pearl St., Nacogdoches Texas; Married, 2 children.

FOIL, J. HAROLD - Forester, Gaylord Container Corp.; Box 555, Bogalusa, La.

FRANCIS, JULIAN - Deceased.

HENDERSON, WILBUR H. - Asst. Mgr. of Timber Operations, Gaylord Container Corp.; Box 771, Bogalusa, La.; Married, 4 children.

HOLMES, W. W. - Area Forester; Continental Co., Inc.; Zwolle, La.; Married, 2 children.

HONNOLD, CLARK D. - Asst. District Chief Appl Corps of Engineers, Savannah District; P. O. Box 889, Savannah, Georgia.

Compliments of

**T. Hofmann-Olsen
Export Lumber
Company, Inc.**



NEW ORLEANS, LA.



COMPLIMENTS

**J. M. Jones
Lumber
Company**

P. O. Box 558

NATCHEZ, MISSISSIPPI



and Becky Bulteman, age 4 1/2 years and 4 1/2 months, respectively, children of James Bulteman -Class of 1951.



O.H. Darling, Jr. and son, age 1 year. Mr. Darling was graduated in 1950 and is now a forester for the Fordyce Lumber Company, Fordyce, Arkansas.

- HOPKINS, JACK G. - Cotton Planter, Waterproof, La.
- JONES, M. SAMUEL, JR. - Forestry Consultant; Box 37, Gibsland, La.; Married 3 children.
- KIRKPATRICK, JOHN C. - Forest Development Director, Gulf States Paper Co.; 21 Springbrook, Tuscaloosa, Ala.; Married, 2 children.
- LOE, ESPY F. - Forester, Crosby Forest Products Co.; 416 Goodyear Blvd., Picayune, Miss.
- MILLSAPS, PAUL G. - Owner, E. Miss. Motor Co., Starkville, Miss.; Married, 2 children.
- MCKILLIPS, ROBERT L. - District Forester, Louisiana Forestry Comm.; Box 137, Natchitoches, La.
- RUSSO, ANDREW J. - 81 Eagle St., Fredonia, N. Y..
- SPROTT, C. HARVEY - Chief Forester, Southland Paper Mill, Inc., P. O. Box 149, Lufkin, Texas; Married, 4 sons.
- WALKER, C. SCOVELL - Forester, S. H. Bolinger and Co., Ltd.; Plain Dealing, La.; Married, 3 children.
- WARMBROD, JAMES G. - District Extension Forester; Box 948, Jackson, Tennessee.
- Class of 1939 (20)
- ARMSTRONG, DONALD B. - Area Forest Supt., International Paper Co., P. O. Box 321, Camden, S. Carolina.
- BELNIAK, CASMER A. - District Supervisor, International Paper Co., P. O. Box 450, Winnsboro, S. C.
- DAVILA, JOSE A. - Lumber Broker; Caguas, Puerto Rico.
- DRUMMOND, DON M. - M.F., LSU, 1939; Professor of Forestry, Montana State University, Missoula, Montana.
- FLASH, J. E., JR. - Continental Oil Co., Rt. No. Box 62-A, Ville Platte, La.
- JOSEFUS, JOHN E. - Address Unknown.
- KOHARA, TOMMY TOMATSU - Owner of Photo Studio; 2916 Louis Street, Alexandria, La.
- LATHROP, FRANK P. - Consulting Forester & C. Business, Fairlawn Farm, Weyanoke, La.; Married, 4 children.
- LEWIS, CHARLES H. - Chief Forester, Crosby Cals, Inc.; 711 Roberts St., DeRidder, La.
- LINN, ED. R. - Branch Manager, U. S. Mengel Plywoods, Inc., Oklahoma City, Okla.
- MARTIN, EVAN, JR. - Extension Forester, Extension Service, Ala. Polytechnic Institute, Auburn, Married, 2 children
- MOLLOY, L. H. - Chief Forester, Crosby Lumber Co., Crosby, Miss.; Married, 3 children.
- MOORE, J. SCOTT - Forester, L. N. Dantzler Lumber Co., Perkinston, Miss.

EDGEWOOD LAND & LOGGING CO., LTD.

P. O. BOX 531

LAKE CHARLES, LOUISIANA

Industry - Research - Education

WORKING TOGETHER

BUILDING BETTER FORESTS

FOR

LOUISIANA



CROSBY CHEMICALS, INCORPORATED

DeRidder, Louisiana



ORE, HAL - Chief Forester; Chicago Mill and Lumber Co., 1769-R Old Leland Road, Greenville, Miss.

HOLSON, J. C. - Dist. Supt.; West Virginia Pulp & Paper Co.; 1209 Highland Ave., Camden, S. C.

ARK, MERIDITH O. - Pulpwood Contractor; 405 West Blvd., Lexington, Miss.; Married, 2 children.

MMERS, JEROME H. - Consulting Forester; Rt. No. 1, Bueche, La.; Married, 3 children.

FUS, JOHN A. - 3108 Sixth St., Port Arthur, Texas.

LER, ARDIE D. - Regional Operations Superintendent, International Paper Co.; 117 West Tally Court, Mobile, Ala.; Married, 2 children.

HIGHT, GEORGE - Assistant Wood Superintendent; East Texas Pulp & Paper Co.; 650 Durdin Drive, Silsbee, Texas.

Class of 1940 (32)

ANDERSON, MASSEY H. - General Manager; M.C. Sigman Stave Mill, Monticello, Ark.

ARNETT, JOHN - Forester and Timber Buyer; Box 504, Clinton, La.

AUCHAMP, EMMETTE - ROTC Instructor, University of Missouri, Columbia, Mo.

ESON, TRAVIS M. - Forestry Consultant; Route No. 2, Walterboro, S. C.

HRENS, ARTHUR - Deceased.

BROWNING, LACY W. - Self-Employed, Partner, E. L. Browning Hardware, Ecru, Miss.

COOL, BIGHAM M. - M.S., Iowa State, 1941; Ph. D., Mich. State, 1957; Professor of Forestry, Clemson Agricultural College; Box 85, Clemson, S. C.; Married, 3 children.

COOPER, JAMES R. - Procurement Mgr.; Koppers Co., Inc., Wood Preserving Div.; 102 Front St., Marietta, Ohio.

DOWDY, FELIX - Division Forester, International Paper Co., Mobile, Ala.

ELFER, L. GUS - Flooring Contractor; Gus Elfer Co., 3622 Toulouse St., New Orleans 19, La.

FOSTER, JOHNNY U. - Broderick Wood Products Co., Denver, Colorado.

FRESHWATER, RICHARD J. - Consulting Forester; P. O. Box 627, Denham Springs, La.

GREEN, JOHN L. - Deceased.

GIRLINGHOUSE, GUS N. - Deceased.

HERLEVICH, JOE - Deceased.

HINTON, JOHN HOPKINS - Tenn. Valley Authority; 705 Edney Bldg., Chattanooga, Tenn.

KETY, J. H. - M.D., LSU, 1950; Practice of General Medicine and Surgery; Covington, La.

KING, LUD E., JR. - Division Forester; Champion Paper and Fibre Co., Box 191, Huntsville, Texas.

LAMBERT, HERBERT G. - Dist. Mgr., American Forest Products Ind., Inc; 1033 National Bank of Commerce Bldg., New Orleans, La.

MOORE, CHARLES H. - P. O. Box 242, Mansfield, La.

MUNSTERMAN, JOHN - Forester; Roy O. Martin Lumber Co., 23 Westwood Blvd., Alexandria, La.

OLMSTEAD, MARION J. - International Paper Co., P. O. Box 272, Quitman, Miss.

RAMKE, THOMAS F. - Forestry Representative; TVA; 705 Edney Bldg., Chattanooga, Tenn.

SALTER, ANDREW, JR. - Address Unknown.

SCHULTZ, OLIVER W. - Block Forester; P. O. Box 43, Clarks, La.

SHIRER, JOHN MARION - Fire Control Assistant, State Comm. of Forestry; Box 357, Pinecrest, Court 7-A, Columbia, S. C.

SIZEMORE, WILLIAM R. - Consulting Forester; 206-11 Patterson Bldg., Tallassee, Ala.

SMITH, WALLACE R. - Regional Forester, Kirby Lbr. Co.; Box 726, Cleveland, Texas.

STEVEN, JAMES N. - District Forester, Louisiana Forestry Comm.; Box 32, Winnsboro, La.

WATERER, JOHN B. - Delta Airlines, Municipal Airport, Atlanta, Ga.

WILSON, JOHN S. - Forester; International Paper Co., 503 W. Leslie, Nashville, Arkansas.

YOUNG, JOHN F. - Address unknown.

Class of 1941 (25)

BUESCHER, PETER P. - Operations Mgr., Under Homes; 4178 Plaza Street, Jackson, Miss.

DAVIS, JOHN E. - Address unknown.

DEDEAUX, RANDLE J. - M.F., Duke, 1947; Consulting Forester; Box 57, Perkinston, Miss.; 2 children.

DIMMICH, ALLEN E. - Deceased.

DUPLANTIS, JOHN D. - Deceased.

EDLESTEIN, ARNOLD A. - 143 Congress St., Mass.

GREMILLION, ARTHUR F. - Address Unknown.

JOHNSON, M.B. - 911 Holiday Ave., San Antonio, Texas.

KOEN, JOHN T. - U. S. Forest Service; Gaines, Georgia.

LEWIS, JOHN R., JR. - Deceased.

MOORE, F. D. - Salesman, Endicott Lbr. & Box 1306 Clark St., Endicott, New York.

REFORESTATION AND MANAGEMENT *Present A Challenge to all Foresters!*



Beneficial Fallout

The Best
The Quickest
The Most Economical
METHOD OF REFORESTATION

CONTROLLED
SOWING OF PINES
FROM THE SKIES

*Fall Seeding Contracts
Being Signed Now!*

FRANK W. BENNETT & ASSOCIATES
CONSULTING FORESTERS

4767 Convention St. Baton Rouge, Louisiana

*There is no Substitute for Experience
Coupled With Modern Methods!*

How to Start a Forestry Career

Start your forestry career by getting acquainted with the tools of your trade — and the nation's oldest and largest house supplying them, Forestry Suppliers, Inc. More than 2,000 items listed in our Catalog No. 8, quality items at dollar-saving prices. Follow the example of professional foresters everywhere — turn to Forestry Suppliers, Inc., for the tools you need, when you need them.

Write today for a copy of Catalog No. 8

FORESTRY SUPPLIERS, INC.

P.O. Box 8305, Battlefield Station, Jackson 4, Miss.
Telephone FLeetwood 4-3565



ert E. Noble--Class of 1958. Mr. Noble is
resently doing research in deer management
or the Mississippi Forestry Commission.

MYERS, J. WALTER - M.F., LSU, 1950; Executive
Director, Forest Farmers Assoc.; P. O. Box 7284
Station C, Atlanta, Ga.

NELSON, ROBERT D. - Forester, TVA, Division of
Forestry Relations; Box 489, Paris, Tenn.

PHILLIPS, WILLIAM T. - Box 189, DeRidder, La.

ROBERTSON, CHARLES W. - Conservation Forester,
International Paper Co.; Camden, Ark.

ROUNDTREE, CHARLES O. - Box 304, Thibodaux, La.

TANNERHILL, BLEN F. - Chief Forester, Urania Lum-
ber Co., Ltd., Urania, La.; Married, 2 children.

TRICHEL, J. S. - Forester; Forest Products Division,
Olin Mathieson Chemical Corp., P. O. Box 488,
W. Monroe, La.

WALL, RALPH T. - Forest Information Chief, La.
Forestry Comm.; 3538 Cole Drive, Baton Rouge, La.

WALLACE, HAROLD E. - Wildlife Biologist, Fla.
Game & Fish Comm.; Box 1838, Vero Beach, Fla.;
Married, 3 children.

WEATHERLY, JOSEPH E., JR. - Deputy State Forester,
Miss. Forestry Comm.; Box 649 (334 Audubon Dr.),
Jackson, Miss.; Married, 2 children.

WHITE, CHARLES W. - Deceased.

WOOLFOLK, EDMUND TAYLOR - Expediter, Barks-
dale & LeBlanc, Gen. Contractors; 615 Sunset Blvd.,
Baton Rouge, La.

Always
TOWARDS TOMORROW



Established in 1889, Fordyce Lumber Company was early in inaugurating planned forest management. Today, under this firmly established program, it ranks among the state's leading lumber manufacturers and looks forward to continuing operations through the years.

Since
1889

The significance of this outlook to you who seek business opportunities following high school or college is that from time to time we have openings for qualified graduates.

Correspondence invited.

FORDYCE LUMBER COMPANY

FORDYCE, ARKANSAS

Manufacturers of Arkansas Soft Pine, Fordyce Royal Oak Flooring, Hardwoods of Quality, "Wolmanized" Treated Lumber and Timbers

BROOKS - POLLARD COMPANY

Advertising



BOYLE BUILDING
LITTLE ROCK, ARKANSAS



THE LUTCHER AND MOORE LUMBER COMPANY

*Your Friend and Servant
Since 1877*

P. O. Box 621

ORANGE, TEXAS

ZACHARIAH, JOSEPH DULLAR - Griffin Nurseries,
Beaumont, Texas.

Class of 1942 (14)

BLEVINS, JACK W. - Vice-President, Gayle-Blevins
Lumber Co.; 2500 -12th St., Box 392, Lake Charles,
La.; Married, 4 children.

BROWN, JOHN B., JR. - Forestry, University Forest
Land; Perkinston, Miss.

DARBY, ALBERT W. - Co-owner; Darby Real Estate
Co.; 114 Short Court St., Florence, Ala.

FORWARD, GEORGE L. - 1003 W. 7th, El Dorado,
Arkansas.

GUNTER, ERIN R. - Chief of Forest Management,
La. Forestry Comm., Baton Rouge, La; Married,
1 child.

HAYS, WILLIAM R., JR. - Manufacturers Representa-
tive, Electronics Business; Box 12204, Dallas 25,
Texas.

HUDSON, CHARLES RAYFORD - Address Unknown.

JACKS, MARSHALL HUGH - Inspector, Barrow-Agus
Laboratories, Inc.; Memphis, Tenn.

KOHLMAN, N. C. - Asst. District Warden; Wash.
State Div. of Forestry; 310 W. Fogarty, Port
Angeles. Washington.

PERDUE, WILLIAM K. - Address unknown.

PORCELLA, SANTIAGO, III - 16 Holly St., Cranford,
N. J.

ROBINOWINTZ, MILTON E. - Cotton and Livestock;
Richmond, Texas.

STALLWORTH, NICHOLAS J. - Mgr., Stallworth
Pine Products Co., Box 1114, Mobile, Ala.

TODD, RALPH LEON - 2648 Bank St., New Orleans,
La.

Class of 1943 (12)

AGUILLARD, NOLAN - Farmer, Box 51, Route 1,
Eunice, La.; Married, 2 children.

AVRARD, JULES E., JR. - Representative for Planters
Peanut Co., #12 San Jose Ave., New Orleans 21,
La.

BATCHELOR, JAMES P., III - Address Unknown.

BOERSTLER, ROSS F. - Boerstler Bros., 618 W.
Trudgeon St., Henryetta, Okla.; Married, 3
children.

BYASSEE, J. F. - Address unknown.

CLEVELAND, ROBERT L. - Chief Forester, Edgewood
Land and Logging Co., Inc.; Box 831, Dequincy,
La.; Married, 1 child.

FREEMAN, E. A. - Assistant Forestry Manager; Olin
Mathieson Chem. Corp., Box 488, West Monroe,
La.



A. J. HODGES INDUSTRIES, INC.

522 Market Street

P. O. Box 1817

SHREVEPORT, LOUISIANA



Game management alumni at a special meeting concerning the banding of waterfowl and doves.



R.V. Miles--Class of 1932.
Mr. Miles was recently elected as member-at-large to the L.S.U. Alumni Federation.

"ROM"

THE SIGN OF A
FRIENDLY NEIGHBOR
AND PROGRESSIVE FORESTRY


TIMBERLAND, HARDWOOD
AND PINE LUMBER

POST AND POLES
RETAIL SALES

ROY O. MARTIN LUMBER CO. INC

P.O. Box 1110

ALEXANDRIA, LA.



"Louisiana's wood using industry provides more employment and a larger payroll than any other single industry in the state. Build up our state's overall prosperity by keeping Louisiana green."

GAYLORD CONTAINER CORPORATION

Div. Crown Zellerbach Corporation

Bogalusa, La.





CONTINENTAL CAN COMPANY, INC.

Southern Advance Bag Operation



Woods Department

Hodge, Louisiana

MCDANIEL, CURTIS M. - Dist. Forester, La. Forestry Comm.; Box 550, Minden, La.

RIVETTE, MANUEL J. - Salesman, Oliver H. Van Horn Co.; 2285 Pickett Ave.; Baton Rouge, La.

WEBB, JOHN M. - Conservation Forester, International Paper Co.; Box 587, Nacogdoches, Texas.

WILKINSON, W. H. - Pastor; Enterprise Baptist Church, Rt. 5, Liberty, Miss.

WILSON, J. G. - Deceased.

Class of 1944 (0)

NO GRADUATES

Class of 1945 (1)

KIRKLEY, EUGENE R. - Consulting Forester, Rt. #6, Center, Texas.

Class of 1946 (3)

ANDERSON, LAWSON M. - Cashier, Helena National Bank, Helena, Ark.

DUTY, JAMES W. - Associate County Agent in Forestry; Box 1126, Alexandria, La.

RITCHIE, JAMES I. - General Mgr., Ala. Trucking Assoc., 424 Bell Bldg., Montgomery, Ala.

Class of 1947 (9)

BURNS, JOE D. - M.F., LSU, 1948; Chief Forester, Tremont Lumber Co.; P. O. Box 213, Joyce, La.; Married, 3 children.

COCHRAN, JACK B. - Partner, La. Hoop Co.; Box 67, Bunkie, La; Married, 3 children.

ELDREDGE, INMAN F. - Regional Forester, The Champion Paper and Fibre Co.; Box 401, Kirbyville, Texas.

FAUCHEAUX, WILLIAM A. - Surveyor; 425 S. Jefferson Davis Parkway, New Orleans, La.

GRIGSBY, HOY C. - M.F., LSU, 1952; Forester, Crossett Experimental Forest, U.S.F.S.; 609 Hickory St., Crossett, Ark.; Married, 3 children.

JOHNSON, CHARLES W. - Major, U. S. Air Force.

MADISON, DAVID P. - Brooksville, Miss.

ROWLAND, LOUIS A. - Director, Information & Education; Miss. Forestry Comm.; 438 Benning Rd., Jackson, Miss.

TUCKER, ROBERT EDWARD - Forester, Southern Advance Bag & Paper, Continental Can Co., P. O. Box 60, Hodge, La.

Class of 1948 (44)

ADEMA, JOHN M. - 309 V.F.W. Blvd., New Orleans, La.

BELL, MARVIN T. - M. S., LSU, Real Estate Salesman, Surety Insurance Co., P. O. Box 1203, Baton Rouge, La.

BRADEN, EARL M. - Hansel Engineering Co., Inc.; 711 Farley Bldg., Birmingham 3, Ala.

BRENT, HOLMER I. - Game Biologist, Washington State Dept. Game, Box 30-C, Elma, Washington.

CHUSTZ, HENRY NORRIS - Farmer, Lakeland, La.

CLARK, HARRY D. - Resident Representative, Fisher Lumber Co., Box 1183, Wisner, La.; Married, 3 children.

COOPER, JACK S. - Asst. Chief Forester, The Flint-kote Co.; Meridian, Miss.

CUMMINGS, W. C. - Assistant County Agent; St. Francisville, La.

CURTIS, JAMES E., JR. - Supt. - Forester, M. A. Pope, Wood Dealer, Box 405, Hammond, La.

DONALDSON, D. J. - Forester; Roy O. Martin Lbr. Co.; 48 Kent Ave., Alexandria, La.

DREWS, ROBERT J. - Field Asst. Wood Procurement; International Paper Co., Rt. #1, Box 175, Kinder, La.

FOSTER, GEORGE W. - Pulpwood Dealer, P. O. Box 643, Many, La.

GAINNEY, LEWIS F. - Box 2519, Lantana, Florida.

GAYLE, JAMES A. - Area Forest Supt., International Paper Co., Box 995, Springhill, La.; Married, 1 child.

GIPSON, RAYMOND E. - Chief Forester, Lutcher and Moore Lbr. Co., Drawer 621, Orange, Texas; Married, 2 children.

HERB, EDWIN A. - Botany Dept., Univ. of Tenn., Knoxville, Tennessee.

HERRINGTON, ALPHAS - Asst. Dist. Forester, International Paper Co.; 1229 10th St., Arkadelphia, Ark.

HODGE, JOSEPH S. - Dist. Supervisor, International Paper Co., P. O. Box 957, Jena, La.; Married, 1 child.

HOLMAN, JACK - M.F., Duke, 1949; Richton Tie and Timber Co., Box 195, Morton, Miss.

HOOVER, KENNETH H. - M.A., LSU, 1951; High School Biology Teacher, Sedro Woolley High School, Sedro Woolley, Wash.

LONG, LEWIS C. - U.S. Forest Service; P. O. Box 667, Toccoa, Ga.

MARGRAVE, FRED N., JR. - Field Asst., International Paper Co.; 2403 W. Short 17th St.; Pine Bluff, Ark.

MCDANIEL, ROBERT L. - Palmetto, La.

MCMAHON, JAMES T. - Southwestern Settlement & Development Co., Box 88, Kountze, Texas.

MIMS, JACK - M.F., LSU, 1948; Forester, Southern Pine Lumber Co.; 410 Arizona St., Lufkin, Texas; Married, 2 children.

NEWSOM, JOHN - La. Dept. of Wild Life and Fisheries; 126 Civil Courts Building, New Orleans, La.

ODOM, JACK C. - Vice-President, Livingston State Bank, 232 Oak Drive, Denham Springs, La.; Married, 2 children.

W. E. PARKS LUMBER CO., INC.

MANUFACTURERS
BANDSAWN HARDWOODS AND CYPRESS LUMBER
NEWELLTON, LA.

P. O. BOX 248
PHONE 4751





Professional Books
Text Books
Drawing Supplies
Engineering Materials
Gifts -- Souvenirs

COLLEGE SUPPLY BOOK CO.

166 Chimes St.
Baton Rouge, La.

PHARES, JOHN H. - M.S., LSU, 1950; Federal Aid Coordinator, Games & Fish Commission, 4539 Meadow Ridge Drive, Jackson, Miss.; Married, 2 children.

PHIFER, TRUMAN E. - Assistant Forester (forest management), Arkansas Forestry Commission, P. O. Box 1940, Little Rock, Ark.

PRICE, KENNETH F. - Owner of apple orchard; Box 16, Pateros, Wash.

REDMOND, HOWARD R. - M.S., L.S.U., 1949; Game Management Forester, Gulf States Paper Corp., Tuscaloosa, Ala.

ROBERTSON, CARROLL - In Service.

ROBERTSON, RALPH R. - Assoc. Extension Forester, Miss. State College, State College, Miss.

ROBINSON, VERNON E. - Dist. Forester; La. Forestry Comm., Box 2777, Monroe, Louisiana.

RODRIGUE, E. A. - Buyer; U. S. Rubber Co., 1000 Marlboro Drive, Joliet, Ill.

SCOTT, THOMAS R., JR. - Partner; Pomeroy & McGowin; 1006-B West Woodlawn, Mobile, Ala.; Married, 3 children.

SMITH, AUTLEY B. - Staff Forester; Olin Mathieson Chemical Corp., P. O. Box 488, West Monroe, La.

SMITH, DONALD J. - Assoc. County Agent; Clinton, La.

STALLWORTH, NICHOLAS B. - Forester, Stallworth Naval Stores Co., Citronelle, Ala.

STEPHENS, MARION A., JR. - District Forester; Gaylord Container Corp.; Box 608, Columbia, Miss.

TANNEHILL, RICHARD M. - Forester, La. Longleaf Lumber Co., Fisher, La.



Lt. and Mrs. J. H. Wright--Class of 1957. Lt. Wright is a jet instructor at the Greenville Air Force Base, Greenville, Mississippi.



VICK, HUGH M. - Forester, Kellogg Lumber Co.;
1200 Grammont St., Monroe, La.

WALSH, GARRETT H. - Forester, Sabine Lumber Co.;
Box 333, Zwolle, La.

WILSON, O. F. - Attendant; Travel Information
Bureau, Texas Highway Dept., P. O. Box 2045,
Orange, Texas.

YANCEY, RICHARD K. - District Supervisor; La. Wild
Life and Fisheries Comm., 126 Civil Courts Bldg.,
New Orleans, La.

Class of 1949 (55)

ALBRECHT, FLEETWOOD J. - Pulpwood Dealer; Box
516, Sullivan's Island, South Carolina.

ALLEN, TERRILL D. - U. S. Forest Svs., Rolling
Fork, Miss.

ANDREWS, JOHN R. - Post Forester; Post Engineers,
Fort Polk, La.

BERGERON, EMILE D. - Manager, Parish Lbr. and
Supply Co., 4975 Choctaw Dr., Baton Rouge, La.

BLAIR, ALBRO E. - Working Circle Forester; St. Regis
Paper Co., McIntosh, Ala.; Married, 1 child.

BONNER, JOHN D. - Dist. Forester, Masonite Corp.;
Box 128, Quitman, Miss.

BURNS, EDMOND B. - Dist. Forester, La. Forestry
Comm.; Box 245, Oberlin, La.

CARLTON, CHARLES F. - Forester; W. E. Parks Lbr.
Co., Newellton, La.; Married, 2 children.

COCKROFT, WILLIAMS S. - Salesman of Forest Pro-
ducts; 3817 Parkwood, Waco, Texas.

COMEAX, WILLIAM E. - U.S. Rubber Co.; 10725
White Oak Drive, Baton Rouge, La.

CORDON, EDWARD C. - Forest Supt.; Alexander State
Forest, Woodworth, La.

COTHREN, VIRGIL W. - M.F., Yale, 1950; Forester;
Southern Pine Assoc.; Box 1170, New Orleans, La.

D'AUTREMONT, FRANCIS J. - Chaseland Plantation,
LeCompte, La.

DOLHONDE, PAUL E. - Forester; Gaylord Container
Div. of Crown Zellerbach, Wood Procurement Dept.
Box 771, Bogalusa, La.

DYKES, JAMES F. - Forestry Agent, Illinois Central
Railroad; 3052 Nicholson Drive, Baton Rouge, La.

EBERT, JAMES B. - Ass't. Professor; Pembroke State
College, Pembroke, N. C.

EBLE, ROBERT G. - 110 Elaine Ave., Harahan, La.

EDWARDS, JAMES H. - Edwards Hardware Co., Brad-
ley, Arkansas.

ELISSALDE, JACOB C. - 2548 Madison Ave., Baton
Rouge, La.

GOODWIN, ARCHIE L. - El Dorado, Ark.



Trees mean income for farmers, jobs
for industrial workers, taxes for
schools and roads and wood for
thousands of items we need every day.

Jackson Parish Bank

Jonesboro, Louisiana

Member Federal Deposit Insurance Corp.



"IF YOU BANK WITH US—
YOU CAN BANK ON US!"



Reimers-Schneider Company, Inc.

HAMMOND, LOUISIANA

Kiln Dried Southern Yellow Pine

Hardwood

Creosoted Fence Posts

Lumber and Timbers



GORINSKY, WALTER A. - 720 McDade St., Bossier City, La.

GRESHAM, CLAUDE H., JR. - M.F., LSU, 1950; Partner with Lee Apperson in Hunting and Fishing Lodge, Wood's Lodge, Campti, La.

HANSBROUGH, THOMAS - North La. Hill Farm Exp. Station, Homer, La.

HOLCOMBE, EDWARD D. - Woodland Conservationist; Soil Conservation Service; Box 236, Denham Springs, La.; Married.

HUGHES, JEFFERSON D., JR. - Area Forester, Gaylord Container Corp., Box 471, DeRidder, La.

JOHNS, ROBERT B. - U.S. Forest Service, Mena, Arkansas.

KELSO, WILLIAM C., JR. - M.F., Yale 1951; Graduate Student, Institute of Agriculture, School of Forestry, University of Minnesota, 1515 Semmes St., Memphis, Tenn.; Single.

KIDD, JOSEPH B. - M.F., 1950; La. Wild Life & Fisheries Comm., 314 West Cheney St., Opelousas, La.

KNOUSE, HERMAN J. - Asst. District Forester, Champion Paper and Fiber Co., Box 191, Huntsville, Texas.

LAPHAM, VIRGIL T. - M.S., 1950; Service Station Operator and Owner, Box 233, Denham Springs, La., Married, 3 children.

LEMAIRE, ROBERT J. - M.S., LSU, 1951; Wild Life Research Biologist; Branch of River Basin Studies, Bureau of Sport Fisheries & Wild Life; 3132 Louisa St., Slidell, La.; Married, 1 child.

LEMOINE, LOUIS E. - 1316 Pamela St., Sulphur, La.

LEWIS, RICHARD F. - Dist. Supt.; Woodlands Div., International Paper Co., Moss Point, Miss.

McCULLOUGH, JOHN M. - Chief, Forest Management; Ala. Dept. of Conservation, Div. of Forestry, 711 High St., Montgomery, Ala.

McFATTER, DONALD L. - Dist. Forester; La. Forestry Comm., Box 347, DeRidder, La.; Married, 1 child.

MARSHALL, THOMAS W. - Assistant Dist. Forester; Gulf States Paper Corp., Box 461, Centerville, Ala.

MIGLICCO, ANTHONY - Kirby Lbr. Co., Kirby Bldg., Houston, Texas.

MILES, DEAN J. - Tie Inspector, Western Electric Corp., Picayune, Miss.

MOODY, RAYMOND D. - M.S., LSU, 1950, Fish and Wildlife Coordinator, International Paper Co., 755 Michigan Ave., Fairhope, Ala.; Married, 2 children.

MORGAN, WILLARD T. - Address Unknown.

PURVIS, GEORGE M. - M.S., LSU, 1950; Asst. Director of Education, Ark. Fish and Game Comm., Little Rock, Ark.

Like Trees . . .

OPPORTUNITY GROWS AND GROWS IN THE DEEP SOUTH

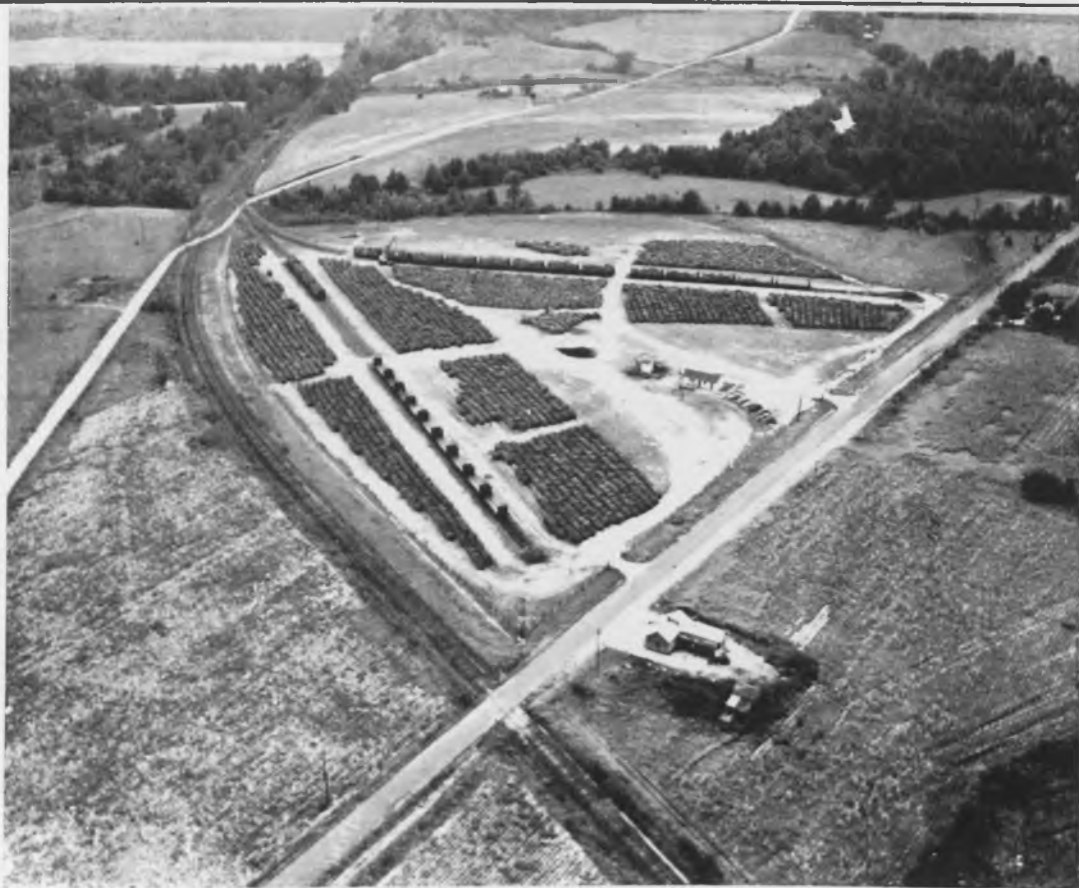
*Louisiana Is No Longer A Backwoods State —
Industry Is Forging Ahead By Leaps And Bounds*

When you are thinking of a profession, don't pass-up the opportunities right here in your
own state.

LOUISIANA FORESTRY NEEDS PROFESSIONALS
POWER COMPANIES NEED PROFESSIONALS
ALLIED INDUSTRIES NEED PROFESSIONALS

STAY SOUTH
YOUNG MAN
STAY SOUTH






A Market Place for the Southern Wood Crop

The greatest incentive toward good forestry practices is a reliable market for wood. By providing such a market for trees cut from thinnings in young stands and from improved cuttings in older stands, the pulp and paper industry makes possible the practice of good forestry in the South.

To encourage farmers and others to grow trees as a regular crop, International Paper Company has built over one hundred mechanized pulpwood yards throughout the South.


International Paper COMPANY

MOBILE, ALABAMA



SINCE 1891

Weaver Bros. Realty Corp.

REAL ESTATE AND TIMBER PRODUCTS

Flora, Louisiana

ROBINSON, RUTHER F., JR. - Forester; International Paper Co., Box 95 N. St. Station, Nacogdoches, Texas.

ROGERS, GORDEN L. - Forester, N. Carolina Pulp and Paper Co., Plymouth, N. C.

ROMERO, LAMBERT H. - Staff Forester, La. Forestry Comm.; Box 1269, Baton Rouge, La.; Married, 2 children.

SCOTT, FREDIE W. - Insurance Business; Amory, Miss.

SIGLER, CARLYS C. - Superintendent, Wood Dept., Calcasieu Paper Co.; Elizabeth, Louisiana.

SIMMONS, CALVIN T. - Forester, Houston Light & Power Co., P. O. Box 1700, Houston, Texas.

STRONG, BYFORD - M.F., LSU, 1950; Field Assistant, International Paper Co., Amite, La.

THIGPEN, DOYLE - M.S., 1950, LSU; Forester, Gaylord Div. of Crown Zellerbach Corp., Livingston, La.

TOMLINSON, ROY V. - Forester, Deltic Farm & Timber Co., Rt. 2, Box 67, El Dorado, Arkansas; Married.

TURNLEY, JAMES E. - Forester, International Paper Co., Trout, La.; Single.

WILLIAMS, CHARLES W. - 706 S. Third St., Monroe, La.

WILLIAMS, LEROY G. - Urania, La.

WINKLE, CLIFTON C. - General Delivery, Cotton Valley, La.

Class of 1950 (78)

ADKINS, FLOYD E. - Forester, Masonite Corp., Box 61, Pachuta, Miss.

ADKINS, VERNON C. - Senior Forester, Continental Can Co., Inc., P.O. Box 644, Hodge, La.; Married, 2 children.

BAILEY, JOE A. - Arkansas Div. of Forestry & Parks, 410 E. Pine St., Prescott, Arkansas.

BAILEY, WILMER F. - U.S. Forest Service, Forest Insect Lab., Agriculture Research Center, Beltsville, Md.

BANTNER, GERALD M. - Rt. #2, Pana, Ill.

BLANCHARD, FRANCOIS R. - M.A. (Ed.), LSU, 1951; High School Teacher, Belle Rose, Louisiana.

BREWTON, LATNIE L., JR. - Pulpwood Contractor; 1312 Maple St., Winnfield, La.

BRISCOE, CHARLES B. - M.F., LSU, 1954, D. F., Duke, 1957; Research Forester; Tropical Forest Research Center, U.S.F.S., Box 577, Rio Piedras, Puerto Rico; Married, 4 children.

BRISLIN, HARRY, JR. - Forester; Indianapolis Ind. Republic Creosoting Co.; 403 Gulfwood Dr., Mobile, Ala.; Married, 4 children.

R E F O R E S T A T I O N



F O R E S T P R O D U C T S

Box 1442
Lake Charles, Louisiana
MAXWELL CHESSON, CHIEF FORESTER

BROWN, CHARLES E. - Purchasing Agent, Gulf States Paper Corp., Tuscaloosa, Ala.

BURNHAM, HUGH M. - District Forester; Nebo Oil Co., Box 358, Good Pine, La.

CAIN, ROBERT H. - Consulting Forester; 1423 College Drive, Pineville, La.

CAMERON, DANIEL C. - Asst. District Forester; Gaylord Container Corp., Walker, La.

CARTER, ROBERT T. - Area Forester, Gaylord Container Corp., P. O. Box 771, Bogalusa, Louisiana.

CHAMPAGNE, EDWIN P., JR. - M.S., LSU, 1951; Texas Forest Service, Linden, Texas.

COLLINS, JACK O. - M.S., LSU, 1951; Biologist, La. Wild Life & Fisheries Comm., Box 184, Lecompte, La.

COPELAND DERWARD R. - Sales Rep.; Celotex Corp., 9024 Wynnewood, Baton Rouge, La.

CROWTHER, CHARLES E. - M. S., LSU, 1951; Wildlife Biol., U.S. Fish & Wildlife Svs., 611 Crawford St., Vicksburg, Miss.; Married, 1 child.

DARLING, ORVILLE H., JR. - M.F., Yale, 1958; Asst. Chief Forester, Fordyce Lumber Co., 702 Beatrice St., Fordyce, Arkansas; Married, 1 child.

DeGRUMMOND, EARNEST A., JR. - District Forester; Masonite Corp., Laurel, Miss.

DELANEY, CHARLES F. - Staff Forester; La. Forestry Comm., 3198 Charlotte Dr., Baton Rouge, La.; Married, 2 children.

DeWITT, WILLARD A. - Unit Forester, International Paper Co., Box 392, Many, La.; Married, 2 children.

ELFER, GUS L, JR. - President, Gus Elfer Co., Inc., 3125 Bell St., New Orleans, La.; Married, 4 children.

EVANS, FREEMAN L. - Director, Information and Education, Miss. Forestry Comm., Box 649, Jackson, Miss.

EVANS, JOHN E. - Lemieux Bros., Inc., 213 Board of Trade Annex, New Orleans, La.

FAKIER, ALBERT J., JR. - La. Wild Life & Fisheries Comm., 765 Bayou Road, Thibodaux, Louisiana.

FAURE, GEORGE T., JR. - Conservation Forester; International Paper Co., Camden, Arkansas.

GASCON, RAYMOND J., JR. - Forester; Delta Match Corp., 211 Fourth St., Port Allen, La.

GOEBEL, GLENN E. - Conservation Forester; Gaylord Container Corp., 1804 Westover St., Jackson, Miss.

GOLDEN, EARNEST A. - M.S., 1951, LSU, Coordinator of Wood Procurement, Champion Paper & Fibre Co., P. O. Box 191, Huntsville, Texas.

GRAHAM, EDWARD - International Paper Co., Natchez, Mississippi.

GRILLOT, IRWIN F. - Forester; W. T. Carter & Bros. Lbr. Co., Box 202, Camden, Tex.; Married, children.

HARGIS, RICHARD C. - Farmer, Colfax, La.

HIGH QUALITY HIGHSCHOOL AND COLLEGE YEARBOOKS

Louisiana Representative
DON L. EDWARDS
715 Camp St. - Suite 406
Phones: JA 2-4135 or AU 3535
New Orleans, Louisiana



HOME OFFICE
129 North West 3rd Street - Oklahoma City 1, Oklahoma

NETTERVILLE, JERRY W., JR. - Forester; Gaylord Container Corp., Box 52, Morgantown, Miss.

ODOM, JIM D. - Box 207, Durant, Miss.

PETERS, LEWIS C. - M.F., Yale, 1951; Forester, Frank W. Bennett & Assoc., 127 E. Drive, Baton Rouge, La.

PIERCE, WILLIE L. - High School Teacher; Rt. #2, Box 227, Ruth, Miss.

PRICE, JAMES H. - Unit Forester; International Paper Co., Brookhaven, Miss.

PUCKETT, JAMES W. - Colfax Lumber & Creosoting Co., Box 231, Pineville, La.

READ, JOHN W. - Block Forester; Olin Mathieson Chem Corp., Box 687, Winnfield, La.

RICHARDSON, FRED H. - 25 Ridge Crest Dr., Flagstaff, Ariz.

ROBERT, BERTIS J. - State Capitol Bldg., 3134 Monroe Ave., Baton Rouge, La.

ROCHESTER, JOHN U. - District Forester; Lucher & Moore Lbr. Co., 204 College, DeQuincy, La.; Married, 3 children.

ROGERS, RAY M. - 1216 Texas Street, Natchitoches, La.

ROUNDTREE, LIONEL J. - Forester, Continental Can Co., Inc., Box 31, Zwolle, La.; Married, 2 children.

ROYE, ARCHIE O. - Rt. #2, Drusilla Lane, Baton Rouge, La.

HEIMRICH, HARRY H. - Roseland Wire & Box Co., Amite, La.

HOLSTEAD, JOHN C. - Insurance Salesman, Amite, La.

HOUYE, DONALD K. - Roseland, La.

HULETT, ALBERT D., JR. - Forester & Surveyor, T. L. James & Co., 2006 Ginger St., Leesville, La.; Married, 3 children.

JONES, JAMES H. - Block Forester; Union Sawmill Co., Huttig, Arkansas.

KROUSE, PIERCE F. - Regional Forester; Kirby Lbr. Co., Box 842, Kirbyville, Texas.

LAFITTE, WILLIAM E. - Box 471, Many, La.

LeBLANC, WILLIE J. - Field Asst.; International Paper Co., Box 51, Clinton, La.

LEONARD, CLIFTON L. - Route 3, Meadville, Miss

LOE, WILLIAM A. - Southern Advance Bag & Paper Co., Box 494, Jonesboro, La.

LOEFFLER, JAMES R. - Logging Supt., Crosby Forest Prod. Co., Route 4, Box 74-A, Picayune, Miss.

MARTIN, EMMETTE L. - Salesman, Lipton Tea Co., 3400 31st St., Meridian, Miss.

McWHORTER, WELBORN E. - Masonite Corp., Wood Procurement, Rt. 3, Laurel, Miss.

MILLER, CHARLES HUGH - Forester, International Paper Co., P. O. Box 382, Carthage, Miss.



God Said It • We Believe It • That Settles It

THE FLAMING TORCH

A BAPTIST CHRISTIAN NEWSPAPER PUBLISHED BY A BAPTIST LAYMAN

For Free Sample Copies Write To: DON L. EDWARDS, Editor
THE FLAMING TORCH
715 Camp St. - Suite 406
New Orleans, Louisiana

Subscription Rate \$2.50
Per Year



RUDY, HOMER E. - Long Bell Lumber Co., DeRidder, La.

SANDOZ, JOHN R. - Forester; Wood Procurement Div., International Paper Co., Box 685, Coushatta, La.

SEALE, JACOB W. - Woodlands Supt., Crosby Chemicals, Inc., Picayune, Miss.

SHELTON, RICHARD K. - Forester; Mgt. Section, Ark. Forests & Parks Comm., Box 272, Stuttgart, Ark.

SMITH, MORTON M. - La. Wild Life and Fisheries Comm., New Orleans, La.

STERN, HERBERT, JR. - M.S., 1955, LSU, Biologist, La. Wild Life & Fisheries Comm., 737 Carol Marie Drive, Baton Rouge, La.; Married.

STEWART, WILLIAM B. - Senior Block Forester, Olin Mathieson Chem, Corp., Winnfield, La.

SUMRALL, JAMES E. - Gaylord Container Corp., 215 N. 24th Ave., Hattiesburg, Miss.

THORNTON, ERNEST E. - M.F., Duke, 1951; Chief Forester, Riegel Paper Corp., Bolton, North Carolina; Married, 2 children.

VAUGHN, CARL J. - Forester; Industrial Lumber Co., 506 Main St., DeQuincy, La.

WALKER, LEROY A. - Rt. #3, Bastrop, La.

WALTERS, HAROLD L. - Forester; International Paper Co., P. O. Box 791, Mansfield, La.

WASSON, GEORGE W. - Area Forester; Gaylord Container Div. of Crown Zellerbach, Pearl River, La.

WATSON, JAMES C. - Private Business, Iowa, La.

WESTMORELAND, LEO R. - Address unknown.

WHALEN, WILLIAM T. - Box 30, Homer, La.

WHITE, L. B. - Asst. District Forester; La. Forestry Comm., P. O. Box 578, Olla, La.

WHITE, L. C. - Forest Manager, Chicago Mill & Lbr. Co., 203 Cleveland St., Tallulah, La.; Married, 2 children.

WHITE, PAUL H. - Asst. Forester, Union Producing Company, Box 1422, Monroe, Louisiana.

Class of 1951 (37)

ATTAWAY, WAYNE M. - Forester and Game Manager; Box 6, Gieger, Alabama.

BOSSIER, CHARLES A. - Forester, International Paper Co., Box 845, Crockett, Texas.

BUILTEMAN, OSCAR J. - Unit Forester, International Paper Co., 1210 Richardson Drive, Henderson, Texas; Married, 2 children.

BURTON, KENNETH L. - District Forester, Texas Forest Service, 2209 Peach St., Lufkin, Texas; Married, 2 children.

CAMPBELL, THOMAS E. - M.S., LSU, 1952; A. J. Hodges Industries, Box 648, Many, La.

CHICK, HENRY, III - Civilian Instructor, Box 822 Graham Air Base, Marianna, Fla.

COLEMAN, JAMES E. - Box 306, Jena, La.

COLTHARP, GEORGE B. - M.S., Colorado State, 1955; Ph.D., Mich. State, 1958; Research Forester, Rocky Mtn. Forest & Range Exp. Station, U. S. Forest Svs., 1405 Marcella N.E., Albuquerque, N. Mex.; Married, 1 child.

CHRISTESSON, CHARLES A. - Box 9, Galena Park, Texas.

COUVILLION, DONALD D. - Box 494, Marksville, La.; Captain, U.S.A.F.; Married, 2 children.

CROWELL, SAMUEL F., JR. - Forester - Supervisor; ARO, Inc., R.R. #1, 509 W. Lincoln, Tullahoma, Tenn.

DAVIS, MACKIE - Dist. Forester; Masonite Corp., Route 1, Hattiesburg, Miss.

EDGINGTON, ROBERT C. - Linden, Texas.

FINNORN, WILLIAM J. - Chief - Glued Prod. Sections, Timber Eng. Co., 4812 Minn. Ave., Washington, D. C.; Married, 4 children.

FOX, GEORGE, JR. - Appraisal Eng., Ark. Assessment Coordination Dept., 26 Lamont Drive, Little Rock, Ark.; Married, 4 children.

GRAYSON, TOMMY B. - 303 W. Fifth St., Corning, Arkansas.

GREENE, JOHN H. - Dist. Forester; La. Forestry Comm., Colfax, La.; Married.

HAYGOOD, JOHN L. - Biologist; La. Wild Life & Fisheries Comm., Minden, La.

HAYNES, JOHNNY O. - Wood Procurement; International Paper Co., Springhill, La.

HENNIGAN, JAMES T. - Forester; Gaylord Container Div. of Crown Zellerbach, P. O. Box 147, Bogalusa, La.

HOLLAND, JAMES J. - Conservation Forester, International Paper Co., Natchez, Miss.

HOLLOMAN, EARVIN A. - Forester; Masonite Corp., Box 162, Collins, Miss.

HOVELL, LEROY E., JR. - U. S. Fish & Wildlife Service, Box 128, Lansing, Iowa; Married, 2 children.

KELLY, FRANK G. - Forester; Woodlands Dept., International Paper Co., Jena, La.

LAMBOU, VICTOR W. - M.S., LSU, 1952; Fishery Research Biologist, La. Wild Life and Fisheries Comm., 4717 Orchid St., Baton Rouge, La.; Married, 3 children.

MORRIS, GEORGE S., JR. - Staff Development Forester; Buckeye Cellulose Corp., Foley, Florida.

MURRAY, ROBERT E. - M.S. LSU, 1951; Biologist; La. Wild Life & Fisheries Commission, Route 3, Simpson, La.

OAKES, CARMAN W. - Rural Mail Carrier; Route 2, Box 129, Leesville, La.

PEARSON, CULTUS O. - Fence Post Producer, Lacombe, Louisiana.

REYNOLDS, GERALD L. - Asst. Procurement Mgr.,
Production Dept.; Koppers Co., Inc., Box 385,
Memphis, Tennessee.

RHODES, JAMES W. - Forester; Crowell Longleaf
Lumber Co., Box 6151, Alexandria, Louisiana.

SANDERS, D. B., JR. - M.S.F., LSU, 1954; Head
of Forest and Land Management; Roy O. Martin
Lumber Company, 322 Rosewood Drive, Alexandria,
La.; Married, 2 children.

SIBLEY, RAIKORD C. - 5214 Breckenridge Ave., Baton
Rouge, La.

TINDELL, MORRIS L. - Forester; W. E. Parks Lumber
Co., Box 86, Newellton, La.; Married, 1 child.

TURMAN, ROLLIE L. - Area Forester; Gaylord Division
of Crown Zellerbach Corp., Route 4, Box 59,
Franklinton, La.

WEAVER, BILLY W. - Area Forester; Gaylord Con-
tainer Div. of Crown Zellerbach, General Delivery,
Talisheek, La.

WILLIAMS, THARON D. - Box 395, Leakesville, Miss.

Class of 1952 (24)

ALISON, THOMAS W. - District Forester; Buckeye
Cellulose Corp., Box 442, Foley, Florida; Married,
1 child.

BALDWIN, MOSES S., JR. - Forest Technician, Inter-
national Paper Co., Box 245, Vernon, Florida;
Married.

BENGSTON, GEORGE W. - 335 Prospect St., New
Haven, Connecticut.

BREARD, LAWRENCE B. - Unit Forester; International
Paper Co., 710 Riverside, Monroe, La.; Married,
2 children.

BRILEY, HUBERT J. - Junior Engineer for Southern
Bell Telephone Co., 642 1/2 South Pierce St.,
Lafayette, La.

BROWN, T. CASWELL - La. Power & Light Co., 4518
St. Peter, New Orleans, La.

CARROLL, ROBERT L. - Unit Forester; International
Paper Co., Box 157, Amite, La.; Married, 3
children.

ELKINS, EDGAR C. - Tremont Lumber Co., Chatham
Louisiana.

FORD, EUGENE M. - Forester; Gaylord Container Corp
Div. of Crown Zellerbach Corp., Box 771, Bogalusa,
Louisiana.

We apologize for any errors in names or
addresses which may have been made in
this Alumni Directory. Please send
corrections to:

The Alumni Editor
The ANNUAL RING
School of Forestry
Louisiana State University
Baton Rouge 3, Louisiana

Please Patronize Our Advertisers



The Class of '59 Now Faces the World (?)

Finis

FOSTER, ROBERT C. - Forester; Buckeye Cellulose Corp., 514 West Green St., Perry, Florida.

GRAHAM, DONALD P. - M.F., LSU, 1952; Plant Pathologist GS-9, U. S. Forest Service, South 157 Howard St., Spokane 16, Washington.

HATCHELL, GLYNDON E. - M.F., Duke, 1953; Research Forester; Alexandria Research Center, Southern Forest Exp. Station, U.S. Forest Svs., Route #1, Denham Springs, La.; Married.

HUFF, PURVIS R. - Forester; Forestry Suppliers, Inc., Box 8305 Battlefield Station, Jackson, Miss.

ITTMAN, BEVERLY A., JR. - 305 Arlington Drive, New Orleans, La.

LAWRASON, T. B., JR. - Forester; Terrebonne Lumber & Supply Co., Inc., Jackson, Louisiana.

LEWIS, EDWARD E. - Forester (Tbr. Mgt.), Chicago Mill & Lbr. Co., 511 E. Darrow St., Tallulah, La.

McCAIN, EDWIN A. - Wood Treating Chemical Co., 3157 Southwest Ave., St. Louis 10, Missouri.

PARKER, JOSEPH W., JR. - Self Employed; Box 73, Natchez, Miss.

PITCHFORD, JOHN J., JR. - 209 St. Charles Ave., Natchez, Miss.

SNYDER, WALTER C. - Timber Buyer, King Lumber Industries; 4311 42nd St., Zachary, La.

TAYLOR, CARL S. - R.F.D. 1, Washington, La.; Self-employed; Married, 2 children.

WALL, STANLEY R. - Plant Manager, Southern Bell Telephone Co., 1604 Leavell St., New Orleans, La.; Married, 4 children.

WALLACE, DEAN R. - Extension Marketing Forester; Ark. Agri. Ext. Svs., Little Rock, Ark.; Married, 3 children.

WALTON, ROBERT A. - M.S.F., Yale, 1957; Forest Supervisor, Union Bag-Camp Paper Corp.; Box 696, Homerville, Ga.; Married, 1 child.

WAMPLER, ALLEN E. - Field Assistant, International Paper Co., Box 171, Colfax, Louisiana.

YERBY, GEORGE V. - Southern Bell Telephone Co., 1215 Prytania St., New Orleans, La.

Class of 1953 (16)

BETER, ROBERT A. - Biologist; Box 453, 129 Harrison Road, Slidell, La.

BRYANT, ROBERT LOUIS - M.S., LSU, 1954; Agriculture Dept., McNeese State College, 3908 Vanderbilt Dr., Lake Charles, La.

CRAFT, WAYNE - Leesville, La.

ENSMINGER, ALLAN B. - Biologist, La. Wild Life & Fisheries Comm.; Box 248, Bell Chasse, La.

HAMM, MAURICE F. - 1711 Elbert Lane, Hixson, Tenn.

HASTINGS, EUGENE F. - P. O. Box 335, Boyce, La.

KILGORE, JOHN D. - Forester; 656 Sunset Blvd., Baton Rouge, La.

KITT, PAUL D. - M.F., LSU, 1958; Instructor in Forestry; McNeese State College, Lake Charles, La.

LABORDE, MAURICE J. - 838 Bungalow Court, New Orleans, La.

LEE, MALCOLM - Field Asst., International Paper Co., Box 727, Jena, La.

LORIO, PETER L., JR. - Res. Dept., Standard Fruit Co., Box 830, New Orleans, La.

MIZELL, LEVOY - Area Forester; Buckeye Cellulose Corp., Rt. 2, Box 40-F, Perry, Fla.

O'NEAL, JED - Procurement Forester, Gulf States Paper Corp., 205 Barnes St., Demopolis, Ala.; Married.

PARSONS, GUY A. - Forester, Sn. Timber Management Service, Inc., 410 S. Cleveland Ave., Brookhaven, Miss.; Married.

WARD, CHARLES E., JR. - In Service; 1125 Ann St., Jackson, Miss.

Wright, Leon O. - Conservation Forester, Union Bag-Camp Class of 1954 (19) Paper Corp., Walterboro, S.C.

BRISTER, JOHN - In Service.

CHENEVERT, RONNIE L. - Roy O. Martin, Alexandria, La.

GIVENS, THOMAS E. - Asst. Timber Buyer; Kellogg Lumber Co., Monroe, La.

GRAHAM, JACK - Asst. Dist. Forester, Hiwassee Land Co., P. O. Box 1008, Jasper, Ala.

JACKSON, WILLIAM B. - Forester, J. A. Bell Estate, Rt. 1, Box 197-A, Kinder, La.

KORNMAN, WILLIAM M. - Forester, Corps of Engineers, U. S. Army, 457 Sunny Vale Lane, Mobile, Ala.; Married, 1 Child.

LADNER, BOBBY JOE - 1956 Hiawatha, Baton Rouge, La.

LEE, BENNON - In Service; 2432 Murphy St., Bossier City, La.

LOGAN, RUFUS D., JR. - Miss. Forestry Comm., Rolling Fork, Miss.

McKAY, MALCOLM KENNETH, JR. - Box 472, Newton, Texas.

MARSHALL, ROBERT B., JR. - Forester; Anderson-Tully Co., Memphis, Tenn.

MARTIN, ROBERT B. - International Paper Co., Box 791, Mansfield, La.

MERRILL, THOMAS, JR. - Forester; Sn. Advance Land & Timber Co., Gilliam, Ark.

MYERS, JAMES C. - Owner, Myers Furn. Co., Rt. 4, McMinnville, Tenn.; Married, 2 children.

PARKER, RAY L., JR. - Woodland Conservationist; Soil Conservation Service, P. O. Box 825, Livingston, Texas.

REMEL, JULIUS J. - Forest Road Eng.; Kirby Lumber Co., Silsbee, Texas.

RICHARD, WILLIAM E., JR. - Southeastern Settlement & Devel. Corp., Kirbyville, Texas.

SPEAR, ROBERT W. - 745 McCormick, Shreveport, La.

VAN DINE, D. GAYLORD - Forester - Pilot; Crosby Chem. Co., Inc.; 174-A Cain Ave., DeRidder, La.; Married, 3 children.

Class of 1955 (12)

ALLEE, ROBERT S. - In Service; 1662 Stuart Ave., Baton Rouge, La.

BARRETT, ROBERT E. - Asst. Treating Supervisor; Koppers Co., Inc., Wood Preserving Div., Houston, Texas.

BOWERS, JOHN W. - College Teacher; Agriculture Dept., McNeese State College, Lake Charles, La.

CABANISS, GEORGE W. - U. S. Forest Service, Box C, Crawfordville, Fla.

DARK, BILLY RAY - Forester; International Paper Co., P. O. Box 662, Olla, La.

JAMES, PAUL, JR. - Forester, Gulf States Paper Corp. Box 288, Tuscaloosa, Ala.

LaFOSSE, HALLET L. - Forester; 1021 N. Ave., Crowley, La.

LEWIS, ARNOLD D. - Research Forester; Southeastern For. Exp. Sta., U.S.F.S., Dry Branch, Ga.; Married, 2 children.

McDANIEL, ODOM, JR. - Asst. District Ranger, U.S.F.S., Box 1669, Alexandria, La.; Married.

SIMMONS, CHARLES DAVID - In Service; Blue Ridge Manor Apt. A-8, Victoria, Texas.

SLADE, WINTON LEE - La. Forestry Comm., Angie, La.

WEBB, JOE STEVE - Asst. Forester, Forestry Dept., Flintkote Company, Meridian, Miss.

Class of 1956 (35)

ADAMS, RAYMOND J. - M.F., 1956; Fisher Lumber Company, Wisner, La.

ADAMS, WILLIAM H., JR. - M.F., 1956, LSU; Ph.D., Auburn, 1959; Graduate Assistant, Wildlife Research Unit, Wildlife Building, Auburn, Alabama.

BENNETT, FRANCIS C. - In Service; 105 Vernon St., Monroe, La.

BLAYLOCK, BOBBY G. - Tactical Fighter Pilot, USAF; 1731 Stanford Ave., Baton Rouge, La.; Married, 2 children.

BROWN, FREDERICK J. - In Service; 1953 N. 38th St., Baton Rouge, La.

CHABRECK, ROBERT N. - Box 25, Grand Chenier, La.

CROXTON, EARL F. - Quality Control Section; International Creosoting Co., Box 690, Texarkana, Texas.

DALRYMPLE, RONALD K. - 2421 Lamar, Memphis, Tenn.

FOIL, ROBERT RODNEY - Instructor of Forestry, LSU School of Forestry, Baton Rouge, La.; Married.

FORD, JERRY C. - In Service; Harrisonburg, La.

FRENCH, ARDEN O., JR. - Agent, Pan Am. Life Ins. Co., 1225 Stuart Ave., Baton Rouge, La.; Married, 2 children.

GREEN, ALVIN Q., JR. - Southern Timber Management Service; Box 92, McLain, Miss.

GRIFFIN, JOHN W. - Forest Technician, International Paper Co.; P. O. Box 766, Jackson, Miss.

GUENARD, JAMES H. - Forester, International Paper Co., Box 608, Lake Providence, La.; Married.

HENSON, ROBERT C. - Management Forester, Miss. Forestry Comm., 406 Southern Ave., Apt. 1, Hattiesburg, Miss; Married.

JORDAN, FREDDIE M. - Management Forester; Miss. Forest Comm., Box 37, Wiggins, Miss.

KAYS, CARLOS E. - Dept. of Fish & Wildlife Resources, P. O. Box 236, Earlington, Ky.

LAMBERT, DINNIE F. - Kisatchie Guard Sta., Start Rt., Provencal, La.

LOGAN, CLIFF A. - In U. S. Army; Rt. 2, Lorman, Miss.

LYTLE, JAMES L. - Chemist in Quality Control Section; International Creosoting Co., Box 690, Texarkana, Tex.; Married, 1 child.

MAXWELL, JAMES E. - Chicago Mill & Lumber Co., Tullulah, La.

McCONNELL, JAMES L. - U. S. Army in Germany; 935 Essex Road, Daytona Beach, Florida.

MILLER, JOHN P. - In U. S. Army; Box 850, Bogalusa, La.

MURRAY, LENIN - Forester; A. J. Hodges Industries, Inc., Box 110, Many, La.

NORTON, CLYDE M. - In U. S. Army; 553 Holland Ave., Philadelphia, Miss.

ONCLAE, TAYLOR A. - Biologist, U.S.D.A., Soil Conservation Service, 2012 1st St., Lake Charles, La.; Married, 2 children.

PRESCOTT, JERRY M. - Route 7, Hattiesburg, Miss.

PURVIS, GABE - Asst. Dist. Forester; Bowaters Carolina Corp., Drawer 550, Lancaster, S. Carolina.

REINHARDT, ELVIN J. - Asst. Dist. Forester, La. Forestry Comm., 4206 Asterof, New Orleans, La.; Married.

SCHORES, DAVID D. - M.F., LSU, 1956; Forester; Buckeye Cellulose Corp., Foley, Fla.; Married, 1 child.

SMITH, BUFORD J. - Forester, Randle Dedeaux, Consulting Forester, Perkinston, Miss.

TREWOLLA, WILLIAM P. - Forester; Procurement Division, International Paper Co., Box 691, Jena, La.

VARNADO, HERMAN - Consulting Forester; Route B, Poplarville, Miss.

WHATLEY, CHARLES V. - Forester, La. Forestry Comm., Monroe, La.

Class of 1957 (31)*

ASSEFF, ROBERT E. - Box 262, Mansfield, La.

BARNETT, JAMES P. - Ensign. U. S. Coast Guard; Route 3, Box 78, Mena, Ark., Single.

BOND, BILLY C. - Management and Research Forester, Coosa River Newsprint Co., Route 3, Box 119-B, Sylacauga, Ala.; Married.

BOX, H. BENTON - Research Associate, LSU School of Forestry, 543 Ontario Avenue, Bogalusa, Louisiana; Married, 1 child.

BRINKMAN, GLENN L. - Box 506, Centerville, Ala.

BROOM, EARL D. - Box 146, Slidell, La.

CROCKER, GEORGE R. - Forester, International Paper Co., 1135 E. San Antonio Ave., Many, La.; Married.

ELLIOTT, HAROLD E. - La. Forestry Comm., Box 137, Natchitoches, La.

GILLESPIE, KENNETH L. - Tremont Lumber Company, Joyce, La.

GUILLORY, GEORGE R. - Box 330, Oakdale, La.

HAMNER, JOHN G. - 3 Bright Street, Savannah, Georgia.

HECKER, GERALD C. - 625 Fern Street, New Orleans, Louisiana.

HOLLAND, PHILIP G. - Greensburg La.

LIZANA, HUEY P. - Tremont Lumber Company, Joyce, La.

LYON, JAMES F., JR. - Forester, Gaylord Container Div. of Crown Zellerbach Corp., Route 1, Box 208, Benton, La.

McLEMORE, BOBBIE F. - M.F., LSU, 1957, Res. Forester, Sn. Forest Exp. Sta., U.S.F.S., 34B Chester St., Alexandria, La.; Married, 1 child.

MOORE, JAMES E. - Consulting Forester, Frank W. Bennett & Associates, 2805 LaSalle Dr., Alexandria, La.; Married, 1 child.

MONDAY, CHARLES P. - 711 N. Pearl St., Carthage, Miss.

NOBLE, ROBERT E. - M.S., LSU, 1958; Game Biologist, Deer Study Leader, Miss. Game Comm., Box 42, Harrison, Miss.

ROSENTER, GEORGE C. - M.F., Yale, 1958; Asst. to Manager, Products Development, Crossett Lumber Co., 407 Main St., Crossett, Ark.; Married, 1 child.

SAUCIER, JOSEPH R. - 469 Corbin St., Macon, Ga.

SCHWARTZ, MERRILL M. - 1438 Estate Dr., Memphis, Tenn.

SELLARS, CHARLES H. - Tremont Lbr. Co., Joyce, La.

SMITH, WILLIE J. - Carriere, Miss., Rt. 1, Box 76.

STOUT, CHARLES W. - Ind. Lbr. Co., Elizabeth, Louisiana.

STRICKLAND, FREDDIE R. - Acquisition Forester, Masonite Corp., 1515 1st Ave., Laurel Ave.; Married.

TONEY, JERRY L. - Rt. 1, McComb, Miss.

TOULIATOS, PLATO D. - Forester; U. S. Forest Service, Sn. For. Exp. Sta., 1906 Tutwiler, Memphis, Tenn.

WATKINS, JOHN T. - U. S. Forest Svs., Russellville, Ark.

WATT, ROBERT M. - New Orleans, La.

WRIGHT, JAMES H. - Lt., U.S.A.F., Jet Instructor Pilot, Box 732, Greenville A.F.B., Miss.; Married.

Class of 1958 (26)

ANDERSON, KERMIT A. - B.S., Miss. State, 1952; LSU, M.F., 1958; Forester, Gaylord Container Div., Crown Zellerbach Corp., Box 52, Morgantown, Miss.; Married, 1 child.

BONNER, FRANK - Research Forester; Southern For. Exp. Sta., U.S.F.S., 1011 Gloria Road, Memphis, 16, Tenn.

CAPEL, JIMMY C. - Dist. Forester, Champion Paper & Fibre Co., 810 N. Third Street, Conroe, Texas; Married, 1 child.

CATALANO, ALVIN N. - 714 St. Maurice Ave., New Orleans, La.

CARPENTER, BENTON E., JR. - Delta Research Center, Stoneville, Miss.

COLE, BUFORD R. - A. J. Hodges Ind., Leesville, La.

FERRILL, MITCHELL D. - Second Lt., U. S. Army, 1038 George St., Chester, Ill.

FOSTER, GRANVILLE W. - Box 685, Marrero, La.

GORDY, PHILIP R. - Wisner, La.

GREEMAN, MERLE G. - Baton Rouge, La.

HAARALA, GARY P. - In Service; Bogalusa, La., 634 Ave. C.

HARPER, DONALD L. - Pomeroy & McGowin, 407 Stuart St., Milton, Fla.

HINSON, MARION RAY - 3631 Bryon St., Baton Rouge, La.

KRAUSE, CLARENCE M. - Forester, U.S.F.S., Box 351, Groveton, Texas; Married.

MARCUS, CHARLES A. - 1234 Tutwiler, Memphis, Tenn.

McCABE, PAUL P. - Prairie City, Ore.

MONK, JOHN R., JR. - Forester, U.S.F.S., 811 Dennis St., Leesville, La.; Married, 1 child.

Class of 1959

MILLER, ERNEST G., JR. - Service For., La. Forestry
Comm., Box 32, Winnsboro, La.; Married, 2
children.

PALERMO, RAYMOND - Bunkie, La.

RICHARDSON, RICHARD W. - Pulpwood Dealer,
Franklinton, La.; Married.

RODGER, TOMMY - Texas Forest Service, Linden,
Texas.

SANDERS, ROBERT W. - Ouachita County, Tax Equali-
zation Bd., 325 N. Madison Ave., N. W., Cam-
den, Ark.

SMOKE, THOMAS D. II - 2945 Thomas Blvd., Port
Arthur, Texas.

SUVANAKARA, PHAIROT - 228 Sukhothai Rd., Ban-
kok, Thailand.

STOVALL, ALLEN - Foxworth, Miss.

WHITEHEAD, RONALD G. - Pulpwood Dealer, Box
334, Olla, La.

ALLEN, KENNETH - Kirby Lumber Co., Cleveland,
Texas.

BAKER, JUAN - 229 S. Solomon St., New Orleans,
La.

BYRD, ROGER - Box 26, Montgomery, La.

DALHOFF, FRANK - 804 Breanon St., Metairie, La.

HARPER, PAUL J. - Gaylord Division of Crown Zeller-
bach Corp., Bogalusa, La.

KENNEDY, WINDELL - Head Forester, La. Cypress
Co., Ponchatoula, La.

SCHULTE, JOHN L. - Koppers Company, Richmond,
Virginia.

